

syntenin-1 (N-20): sc-19379

BACKGROUND

Syntenin-1 (also known as syntenin, syndecan binding protein, melanoma differentiation-associated protein 9 or proTGF α cytoplasmic domain-interacting protein 18) is a protein that binds to the cytoplasmic domains of the syndecans in yeast 2-hybrid screens and other assays. Syntenin-1 contains a tandem repeat of PDZ domains that reacts with the FYA (phe-tyr-ala) carboxy-terminal amino acid sequence of the syndecans. It may function as an adaptor that couples syndecans to cytoskeletal proteins or cytosolic downstream signal-effectors. Syntenin-1 co-localizes and interacts specifically with immature, intracellular forms of proTGF α . It is a human γ interferon responsive protein. Syntenin-1 contains PSD-95/Discs large/z0-1 (PDZ) domains and associates with the cytoplasmic tail of the IL-5R α . It directly associates with the transcription factor Sox-4. The PDZ proteins PICK1, GRIP, ABP and syntenin-1 bind multiple glutamate receptor subtypes.

CHROMOSOMAL LOCATION

Genetic locus: SDCBP (human) mapping to 8q12.1.

SOURCE

syntenin-1 (N-20) is an affinity purified goat polyclonal antibody raised against a peptide mapping near the N-terminus of syntenin-1 of human origin.

PRODUCT

Each vial contains 200 μ g IgG in 1.0 ml of PBS with < 0.1% sodium azide and 0.1% gelatin.

Blocking peptide available for competition studies, sc-19379 P, (100 μ g peptide in 0.5 ml PBS containing < 0.1% sodium azide and 0.2% BSA).

STORAGE

Store at 4° C, ****DO NOT FREEZE****. Stable for one year from the date of shipment. Non-hazardous. No MSDS required.

APPLICATIONS

syntenin-1 (N-20) is recommended for detection of syntenin-1 of human origin by Western Blotting (starting dilution 1:200, dilution range 1:100-1:1000), immunoprecipitation [1-2 μ g per 100-500 μ g of total protein (1 ml of cell lysate)], immunofluorescence (starting dilution 1:50, dilution range 1:50-1:500), immunohistochemistry (including paraffin-embedded sections) (starting dilution 1:50, dilution range 1:50-1:500) and solid phase ELISA (starting dilution 1:30, dilution range 1:30-1:3000).

Syntenin-1 (N-20) is also recommended for detection of syntenin-1 in additional species, including canine and avian.

Suitable for use as control antibody for syntenin-1 siRNA (h): sc-42164, syntenin-1 shRNA Plasmid (h): sc-42164-SH and syntenin-1 shRNA (h) Lentiviral Particles: sc-42164-V.

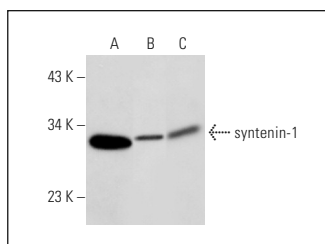
Molecular Weight of syntenin-1: 33 kDa.

Positive Controls: HEK293 whole cell lysate: sc-45136, HeLa whole cell lysate: sc-2200 or A-431 whole cell lysate: sc-2201.

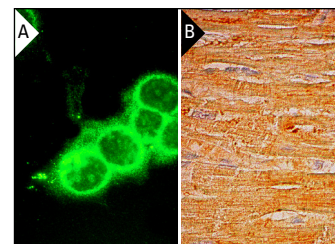
RECOMMENDED SECONDARY REAGENTS

To ensure optimal results, the following support (secondary) reagents are recommended: 1) Western Blotting: use donkey anti-goat IgG-HRP: sc-2020 (dilution range: 1:2000-1:100,000) or Cruz Marker™ compatible donkey anti-goat IgG-HRP: sc-2033 (dilution range: 1:2000-1:5000), Cruz Marker™ Molecular Weight Standards: sc-2035, TBS Blotto A Blocking Reagent: sc-2333 and Western Blotting Luminol Reagent: sc-2048. 2) Immunoprecipitation: use Protein A/G PLUS-Agarose: sc-2003 (0.5 ml agarose/2.0 ml). 3) Immunofluorescence: use donkey anti-goat IgG-FITC: sc-2024 (dilution range: 1:100-1:400) or donkey anti-goat IgG-TR: sc-2783 (dilution range: 1:100-1:400) with UltraCruz™ Mounting Medium: sc-24941. 4) Immunohistochemistry: use ImmunoCruz™: sc-2053 or ABC: sc-2023 goat IgG Staining Systems.

DATA



syntenin-1 (N-20): sc-19379. Western blot analysis of syntenin-1 expression in HEK293 (A), HeLa (B) and A-431 (C) whole cell lysates.



syntenin-1 (N-20): sc-19379. Immunofluorescence staining of methanol-fixed MCF7 cells showing membrane localization (A). Immunoperoxidase staining of formalin fixed, paraffin-embedded human heart muscle tissue showing cytoplasmic staining of myocytes (B).

SELECT PRODUCT CITATIONS

1. Chen, F., et al. 2008. Syntenin negatively regulates TRAF6-mediated IL-1R/TLR4 signaling. *Cell. Signal.* 20: 666-674.

RESEARCH USE

For research use only, not for use in diagnostic procedures.

PROTOCOLS

See our web site at www.scbt.com or our catalog for detailed protocols and support products.

MONOS
Satisfaction
Guaranteed

Try **syntenin-1 (C-3): sc-515538** or **syntenin-1 (E-3): sc-515507**, our highly recommended monoclonal alternatives to syntenin-1 (N-20).