

Mms2 (C-18): sc-19541

BACKGROUND

Uev1A (also designated ubiquitin-conjugating enzyme E2 variant 1 (UEV1) and CROC1) and Mms2 (UEV2) proteins are similar in sequence and in predicted structure to the ubiquitin-conjugating enzymes or E2s, but lack a critical cysteine residue essential for the catalytic activity of E2 enzymes. Therefore, Uev1A does not have ubiquitin-conjugating activity *in vitro*. However, constitutive expression of exogenous Uev1A in colon carcinoma cells inhibits their capacity to differentiate upon confluence. Studies on recombinant Uev1A show that it localizes to the nucleus, excluding the nucleolar regions. Uev1A functions with TRAF6, a RING domain protein, to catalyze the synthesis of unique polyubiquitin chains linked through Lysine 63 of ubiquitin. UBC13 (ubiquitin-conjugating enzyme E2N (UBE2N)) may be involved in protein degradation mainly in the muscles and testis. In yeast, Mms2/UBC13 complex assembles novel polyubiquitin chains for signaling in DNA repair, and suggests that UEV proteins may act to increase diversity and selectivity in ubiquitin conjugation.

CHROMOSOMAL LOCATION

Genetic locus: UBE2V2 (human) mapping to 8q11.21; Ube2v2 (mouse) mapping to 16 A2.

SOURCE

Mms2 (C-18) is an affinity purified goat polyclonal antibody raised against a peptide mapping near the C-terminus of Mms2 of mouse origin.

PRODUCT

Each vial contains 200 µg IgG in 1.0 ml of PBS with < 0.1% sodium azide and 0.1% gelatin.

Blocking peptide available for competition studies, sc-19541 P, (100 µg peptide in 0.5 ml PBS containing < 0.1% sodium azide and 0.2% BSA).

STORAGE

Store at 4° C, ****DO NOT FREEZE****. Stable for one year from the date of shipment. Non-hazardous. No MSDS required.

APPLICATIONS

Mms2 (C-18) is recommended for detection of Mms2 of mouse, rat and human origin by Western Blotting (starting dilution 1:200, dilution range 1:100-1:1000), immunoprecipitation [1-2 µg per 100-500 µg of total protein (1 ml of cell lysate)], immunofluorescence (starting dilution 1:50, dilution range 1:50-1:500), immunohistochemistry (including paraffin-embedded sections) (starting dilution 1:50, dilution range 1:50-1:500) and solid phase ELISA (starting dilution 1:30, dilution range 1:30-1:3000).

Mms2 (C-18) is also recommended for detection of Mms2 in additional species, including equine, canine, bovine, porcine and avian.

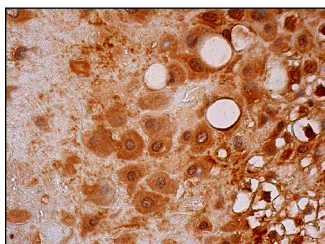
Suitable for use as control antibody for Mms2 siRNA (h): sc-72124, Mms2 siRNA (m): sc-72125, Mms2 shRNA Plasmid (h): sc-72124-SH, Mms2 shRNA Plasmid (m): sc-72125-SH, Mms2 shRNA (h) Lentiviral Particles: sc-72124-V and Mms2 shRNA (m) Lentiviral Particles: sc-72125-V.

Molecular Weight of Mms2: 18 kDa.

RECOMMENDED SECONDARY REAGENTS

To ensure optimal results, the following support (secondary) reagents are recommended: 1) Western Blotting: use donkey anti-goat IgG-HRP: sc-2020 (dilution range: 1:2000-1:100,000) or Cruz Marker™ compatible donkey anti-goat IgG-HRP: sc-2033 (dilution range: 1:2000-1:5000), Cruz Marker™ Molecular Weight Standards: sc-2035, TBS Blotto A Blocking Reagent: sc-2333 and Western Blotting Luminol Reagent: sc-2048. 2) Immunoprecipitation: use Protein A/G PLUS-Agarose: sc-2003 (0.5 ml agarose/2.0 ml). 3) Immunofluorescence: use donkey anti-goat IgG-FITC: sc-2024 (dilution range: 1:100-1:400) or donkey anti-goat IgG-TR: sc-2783 (dilution range: 1:100-1:400) with UltraCruz™ Mounting Medium: sc-24941. 4) Immunohistochemistry: use ImmunoCruz™: sc-2053 or ABC: sc-2023 goat IgG Staining Systems.

DATA



Mms2 (C-18): sc-19541. Immunoperoxidase staining of formalin fixed, paraffin-embedded human placenta tissue showing cytoplasmic and nuclear staining of decidual cells.

RESEARCH USE

For research use only, not for use in diagnostic procedures.

PROTOCOLS

See our web site at www.scbt.com or our catalog for detailed protocols and support products.


 MONOS
Satisfaction
Guaranteed

Try **Uev1A/Mms2 (E-6): sc-377254** or **Uev1A/Mms2 (C-12): sc-377223**, our highly recommended monoclonal alternatives to Mms2 (C-18).