

RP1 (P-20): sc-19549

BACKGROUND

APC (adenomatous polyposis coli) is a tumor suppressor gene that is frequently mutated in colorectal cancers and is one of the earliest indicators of colorectal carcinogenesis. APC is widely expressed and is largely similar to the related brain-specific homolog APCL. These proteins both associate with β -catenin and functionally regulate the levels of intracellular β -catenin. Additionally, these homologs interact with the microtubule cytoskeletal protein EB1 to regulate cell cycle progression or growth control. EB1 family proteins (EB1, RP1 (EB2) and EB3) interact with cytoplasmic microtubules in interphase cells, with mitotic spindles, and with the APC tumor suppressor gene. The functional inactivation of the APC gene product is a key event in colorectal tumorigenesis. RP1 is localized in the plus ends of microtubule networks in the presence or absence of APC. The gene which encodes RP1 maps to human chromosome 18q12.1.

CHROMOSOMAL LOCATION

Genetic locus: MAPRE2 (human) mapping to 18q12.1; Mapre2 (mouse) mapping to 18 A2.

SOURCE

RP1 (P-20) is an affinity purified goat polyclonal antibody raised against a peptide mapping within an internal region of RP1 of human origin.

PRODUCT

Each vial contains 200 μ g IgG in 1.0 ml of PBS with < 0.1% sodium azide and 0.1% gelatin.

Blocking peptide available for competition studies, sc-19549 P, (100 μ g peptide in 0.5 ml PBS containing < 0.1% sodium azide and 0.2% BSA).

STORAGE

Store at 4° C, ****DO NOT FREEZE****. Stable for one year from the date of shipment. Non-hazardous. No MSDS required.

APPLICATIONS

RP1 (P-20) is recommended for detection of RP1 of mouse, rat and human origin by Western Blotting (starting dilution 1:200, dilution range 1:100-1:1000), immunoprecipitation [1-2 μ g per 100-500 μ g of total protein (1 ml of cell lysate)], immunofluorescence (starting dilution 1:50, dilution range 1:50-1:500) and solid phase ELISA (starting dilution 1:30, dilution range 1:30-1:3000).

RP1 (P-20) is also recommended for detection of RP1 in additional species, including equine, canine, bovine, porcine and avian.

Suitable for use as control antibody for RP1 siRNA (h): sc-37609, RP1 siRNA (m): sc-37610, RP1 shRNA Plasmid (h): sc-37609-SH, RP1 shRNA Plasmid (m): sc-37610-SH, RP1 shRNA (h) Lentiviral Particles: sc-37609-V and RP1 shRNA (m) Lentiviral Particles: sc-37610-V.

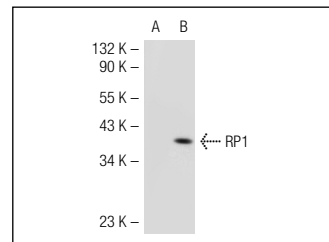
Molecular Weight of RP1: 35 kDa.

Positive Controls: RP1 (m3): 293T Lysate: sc-123260 or K-562 whole cell lysate: sc-2203.

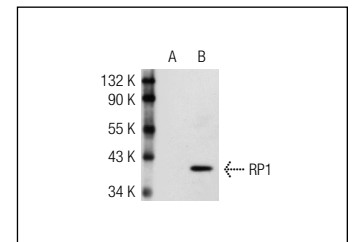
RECOMMENDED SECONDARY REAGENTS

To ensure optimal results, the following support (secondary) reagents are recommended: 1) Western Blotting: use donkey anti-goat IgG-HRP: sc-2020 (dilution range: 1:2000-1:100,000) or Cruz Marker™ compatible donkey anti-goat IgG-HRP: sc-2033 (dilution range: 1:2000-1:5000), Cruz Marker™ Molecular Weight Standards: sc-2035, TBS Blotto A Blocking Reagent: sc-2333 and Western Blotting Luminol Reagent: sc-2048. 2) Immunoprecipitation: use Protein A/G PLUS-Agarose: sc-2003 (0.5 ml agarose/2.0 ml). 3) Immunofluorescence: use donkey anti-goat IgG-FITC: sc-2024 (dilution range: 1:100-1:400) or donkey anti-goat IgG-TR: sc-2783 (dilution range: 1:100-1:400) with UltraCruz™ Mounting Medium: sc-24941.

DATA



RP1 (P-20): sc-19549. Western blot analysis of RP1 expression in non-transfected: sc-117752 (A) and mouse RP1 transfected: sc-123260 (B) 293T whole cell lysates.



RP1 (P-20): sc-19549. Western blot analysis of RP1 expression in non-transfected: sc-117752 (A) and mouse RP1 transfected: sc-123258 (B) 293T whole cell lysates.

RESEARCH USE

For research use only, not for use in diagnostic procedures.

PROTOCOLS

See our web site at www.scbt.com or our catalog for detailed protocols and support products.

MONOS
Satisfaction
Guaranteed

Try **RP1 (F-11): sc-390375** or **RP1 (KT52): sc-101490**, our highly recommended monoclonal alternatives to RP1 (P-20).