

# prefoldin 2 (L-20): sc-19833

## BACKGROUND

Molecular chaperones are proteins that assist in the correct folding of other proteins in the crowded molecular environment that exists in living cells. Within this class of proteins, a key role is played by chaperonins, multisubunit toroidal (i.e. doughnut-shaped) assemblies that undergo major ATP-dependent conformational changes as part of the mechanism of facilitated folding. Prefoldin is a heterohexameric chaperone protein which has the ability to capture unfolded Actin. Six prefoldin polypeptides, prefoldin 1-6, have been identified. Prefoldin 1 is a 122 amino acid protein that binds specifically to cytosolic chaperonin (c-cpn) and transfers target proteins to it. Prefoldin 3 (VBP1 or VHL binding protein-1) forms complexes with VHL and is translocated from perinuclear granules to the nucleus or cytoplasm. Prefoldin 4 is a possible transcription factor. Prefoldin 5 (c-Myc-binding protein Mm-1, Myc modulator 1 or MM-1) is a c-Myc binding protein.

## REFERENCES

1. Tsuchiya, H., Iseda, T. and Hino, O. 1996. Identification of a novel protein (VBP-1) binding to the von Hippel-Lindau (VHL) tumor suppressor gene product. *Cancer Res.* 56: 2881-2885.
2. Brinke, A., Green, P.M. and Giannelli, F. 1997. Characterization of the gene (VBP1) and transcript for the von Hippel-Lindau binding protein and isolation of the highly conserved murine homologue. *Genomics* 45: 105-112.
3. Vainberg, I.E., Lewis, S.A., Rommelaere, H., Ampe, C., Vandekerckhove, J., Klein, H.L. and Cowan, N.J. 1998. Prefoldin, a chaperone that delivers unfolded proteins to cytosolic chaperonin. *Cell* 93: 863-873.
4. LocusLink Report (LocusID: 300133). <http://www.ncbi.nlm.nih.gov/LocusLink/>

## CHROMOSOMAL LOCATION

Genetic locus: PFDN2 (human) mapping to 1q23.3; Pfdn2 (mouse) mapping to 1 H3.

## SOURCE

prefoldin 2 (L-20) is an affinity purified goat polyclonal antibody raised against a peptide mapping near the N-terminus of prefoldin 2 of human origin.

## PRODUCT

Each vial contains 200 µg IgG in 1.0 ml of PBS with < 0.1% sodium azide and 0.1% gelatin.

Blocking peptide available for competition studies, sc-19833 P, (100 µg peptide in 0.5 ml PBS containing < 0.1% sodium azide and 0.2% BSA).

## STORAGE

Store at 4° C, **\*\*DO NOT FREEZE\*\***. Stable for one year from the date of shipment. Non-hazardous. No MSDS required.

## PROTOCOLS

See our web site at [www.scbt.com](http://www.scbt.com) or our catalog for detailed protocols and support products.

## APPLICATIONS

prefoldin 2 (L-20) is recommended for detection of prefoldin 2 of mouse, rat and human origin by Western Blotting (starting dilution 1:200, dilution range 1:100-1:1000), immunofluorescence (starting dilution 1:50, dilution range 1:50-1:500), immunohistochemistry (including paraffin-embedded sections) (starting dilution 1:50, dilution range 1:50-1:500) and solid phase ELISA (starting dilution 1:30, dilution range 1:30-1:3000).

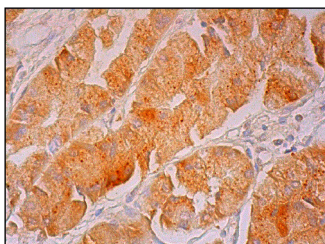
prefoldin 2 (L-20) is also recommended for detection of prefoldin 2 in additional species, including equine, canine, bovine and porcine.

Suitable for use as control antibody for prefoldin 2 siRNA (h): sc-40871, prefoldin 2 siRNA (m): sc-40872, prefoldin 2 shRNA Plasmid (h): sc-40871-SH, prefoldin 2 shRNA Plasmid (m): sc-40872-SH, prefoldin 2 shRNA (h) Lentiviral Particles: sc-40871-V and prefoldin 2 shRNA (m) Lentiviral Particles: sc-40872-V.

## RECOMMENDED SECONDARY REAGENTS

To ensure optimal results, the following support (secondary) reagents are recommended: 1) Western Blotting: use donkey anti-goat IgG-HRP: sc-2020 (dilution range: 1:2000-1:100,000) or Cruz Marker™ compatible donkey anti-goat IgG-HRP: sc-2033 (dilution range: 1:2000-1:5000), Cruz Marker™ Molecular Weight Standards: sc-2035, TBS Blotto A Blocking Reagent: sc-2333 and Western Blotting Luminol Reagent: sc-2048. 2) Immunofluorescence: use donkey anti-goat IgG-FITC: sc-2024 (dilution range: 1:100-1:400) or donkey anti-goat IgG-TR: sc-2783 (dilution range: 1:100-1:400) with UltraCruz™ Mounting Medium: sc-24941. 3) Immunohistochemistry: use ImmunoCruz™: sc-2053 or ABC: sc-2023 goat IgG Staining Systems.

## DATA



prefoldin 2 (L-20): sc-19833. Immunoperoxidase staining of formalin fixed, paraffin-embedded human upper stomach tissue showing cytoplasmic staining of glandular cells.

## RESEARCH USE

For research use only, not for use in diagnostic procedures.