

# prefoldin 3 (K-13): sc-19837

## BACKGROUND

Molecular chaperones are proteins that assist in the correct folding of other proteins in the crowded molecular environment that exists in living cells. Within this class of proteins, a key role is played by chaperonins, multisubunit toroidal (i.e., doughnut-shaped) assemblies that undergo major ATP-dependent conformational changes as part of the mechanism of facilitated folding. Prefoldin is a heterohexameric chaperone protein which has the ability to capture unfolded Actin. Six prefoldin polypeptides, prefoldin 1–6, have been identified. Prefoldin 1 is a 122-amino acid protein that binds specifically to cytosolic chaperonin (c-cpn) and transfers target proteins to it. Prefoldin 3 (VBP1 or VHL binding protein-1) forms complexes with VHL and is translocated from perinuclear granules to the nucleus or cytoplasm. Prefoldin 4 is a possible transcription factor. Prefoldin 5 (c-Myc-binding protein Mm-1, Myc modulator 1 or MM-1) is a c-Myc binding protein.

## CHROMOSOMAL LOCATION

Genetic locus: VBP1 (human) mapping to Xq28; Vbp1 (mouse) mapping to X A7.3.

## SOURCE

prefoldin 3 (K-13) is an affinity purified goat polyclonal antibody raised against a peptide mapping near the N-terminus of prefoldin 3 of human origin.

## PRODUCT

Each vial contains 200 µg IgG in 1.0 ml of PBS with < 0.1% sodium azide and 0.1% gelatin.

Blocking peptide available for competition studies, sc-19837 P, (100 µg peptide in 0.5 ml PBS containing < 0.1% sodium azide and 0.2% BSA).

## STORAGE

Store at 4° C, **\*\*DO NOT FREEZE\*\***. Stable for one year from the date of shipment. Non-hazardous. No MSDS required.

## APPLICATIONS

prefoldin 3 (K-13) is recommended for detection of prefoldin 3 of mouse, rat and human origin by Western Blotting (starting dilution 1:200, dilution range 1:100-1:1000), immunoprecipitation [1-2 µg per 100-500 µg of total protein (1 ml of cell lysate)], immunofluorescence (starting dilution 1:50, dilution range 1:50-1:500) and solid phase ELISA (starting dilution 1:30, dilution range 1:30-1:3000).

Suitable for use as control antibody for prefoldin 3 siRNA (h): sc-40873, prefoldin 3 siRNA (m): sc-40874, prefoldin 3 shRNA Plasmid (h): sc-40873-SH, prefoldin 3 shRNA Plasmid (m): sc-40874-SH, prefoldin 3 shRNA (h) Lentiviral Particles: sc-40873-V and prefoldin 3 shRNA (m) Lentiviral Particles: sc-40874-V.

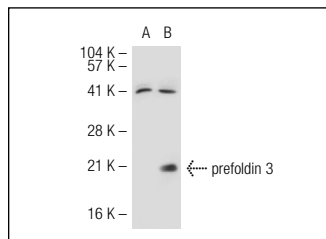
Molecular Weight of prefoldin 3: 23 kDa.

Positive Controls: prefoldin 3 (h): 293T Lysate: sc-116220 or HL-60 whole cell lysate: sc-2209.

## RECOMMENDED SECONDARY REAGENTS

To ensure optimal results, the following support (secondary) reagents are recommended: 1) Western Blotting: use donkey anti-goat IgG-HRP: sc-2020 (dilution range: 1:2000-1:100,000) or Cruz Marker™ compatible donkey anti-goat IgG-HRP: sc-2033 (dilution range: 1:2000-1:5000), Cruz Marker™ Molecular Weight Standards: sc-2035, TBS Blotto A Blocking Reagent: sc-2333 and Western Blotting Luminol Reagent: sc-2048. 2) Immunoprecipitation: use Protein A/G PLUS-Agarose: sc-2003 (0.5 ml agarose/2.0 ml). 3) Immunofluorescence: use donkey anti-goat IgG-FITC: sc-2024 (dilution range: 1:100-1:400) or donkey anti-goat IgG-TR: sc-2783 (dilution range: 1:100-1:400) with UltraCruz™ Mounting Medium: sc-24941.

## DATA



prefoldin 3 (K-13): sc-19837. Western blot analysis of prefoldin 3 expression in non-transfected: sc-117752 (A) and human prefoldin 3 transfected: sc-116220 (B) 293T whole cell lysates.

## SELECT PRODUCT CITATIONS

- Mousnier, A., et al. 2007. von Hippel Lindau binding protein 1-mediated degradation of integrase affects HIV-1 gene expression at a postintegration step. Proc. Natl. Acad. Sci. USA 104: 13615-13620.

## RESEARCH USE

For research use only, not for use in diagnostic procedures.

## PROTOCOLS

See our web site at [www.scbt.com](http://www.scbt.com) or our catalog for detailed protocols and support products.



Try **prefoldin 3 (D-5): sc-390524** or **prefoldin 3 (B-3): sc-390465**, our highly recommended monoclonal alternatives to prefoldin 3 (K-13).