

Sox-15 (H-113): sc-20101

BACKGROUND

Sox genes comprise a family of genes that are related to the mammalian sex determining gene SRY. These genes similarly contain sequences that encode for the HMG-box domain, which is responsible for the sequence-specific DNA-binding activity. Sox genes encode putative transcriptional regulators implicated in the decision of cell fates during development and the control of diverse developmental processes. The highly complex group of Sox genes cluster at a minimum of 40 different loci that rapidly diverged in various animal lineages. At present 30 Sox genes have been identified, and members of this family have been shown to be conserved during evolution and to play key roles during animal development. Some are involved in human diseases, including sex reversal.

REFERENCES

1. Laudet, V., Stehelin, D. and Clevers, H. 1993. Ancestry and diversity of the HMG box superfamily. *Nucleic Acids Res.* 21: 2493-2501.
2. Kuhlbrodt, K., Herbarth, B., Sock, E., Hermans-Borgmeyer, I. and Wegner, M. 1998. Sox-10, a novel transcriptional modulator in glial cells. *J. Neurosci.* 18: 237-250.
3. Arsic, N., Rajic, T., Stanojic, S., Goodfellow, P.N. and Stevanovic, M. 1998. Characterisation and mapping of the human Sox-14 gene. *Cytogenet. Cell Genet.* 83: 139-146.
4. Osaki, E., Nishina, Y., Inazawa, J., Copeland, N.G., Gilbert, D.J., Jenkins, N.A., Ohsugi, M., Tezuka, T., Yoshida, M. and Semba, K. 1999. Identification of a novel SRY-related gene and its germ cell-specific expression. *Nucleic Acids Res.* 27: 2503-2510.
5. Sasai, Y. 2001. Roles of Sox factors in neural determination: conserved signaling in evolution? *Int. J. Dev. Biol.* 45: 321-326.

CHROMOSOMAL LOCATION

Genetic locus: SOX15 (human) mapping to 17p13.1; Sox15 (mouse) mapping to 11 B3.

SOURCE

Sox-15 (H-113) is a rabbit polyclonal antibody raised against amino acids 121-233 mapping at the C-terminus of Sox-15 of human origin.

PRODUCT

Each vial contains 200 µg IgG in 1.0 ml of PBS with < 0.1% sodium azide and 0.1% gelatin. Also available as TransCruz reagent for Gel Supershift and ChIP applications, sc-20101 X, 200 µg/0.1 ml.

STORAGE

Store at 4° C, ****DO NOT FREEZE****. Stable for one year from the date of shipment. Non-hazardous. No MSDS required.

RESEARCH USE

For research use only, not for use in diagnostic procedures.

APPLICATIONS

Sox-15 (H-113) is recommended for detection of Sox-15 of human and, to a lesser extent, mouse and rat origin by Western Blotting (starting dilution 1:200, dilution range 1:100-1:1000), immunoprecipitation [1-2 µg per 100-500 µg of total protein (1 ml of cell lysate)], immunofluorescence (starting dilution 1:50, dilution range 1:50-1:500) and solid phase ELISA (starting dilution 1:30, dilution range 1:30-1:3000).

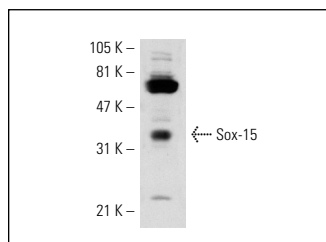
Suitable for use as control antibody for Sox-15 siRNA (h): sc-38431, Sox-15 siRNA (m): sc-38428, Sox-15 shRNA Plasmid (h): sc-38431-SH, Sox-15 shRNA Plasmid (m): sc-38428-SH, Sox-15 shRNA (h) Lentiviral Particles: sc-38431-V and Sox-15 shRNA (m) Lentiviral Particles: sc-38428-V.

Sox-15 (H-113) X TransCruz antibody is recommended for Gel Supershift and ChIP applications.

Molecular Weight of Sox-15: 25 kDa.

Positive Controls: NTERA-2 cl.D1 whole cell lysate: sc-364181 HeLa whole cell lysate: sc-2200.

DATA



Sox-15 (H-113): sc-20101. Western blot analysis of Sox-15 expression in NTERA-2 cl.D1 whole cell lysate.

PROTOCOLS

See our web site at www.scbt.com or our catalog for detailed protocols and support products.



Try **Sox-15 (D-8): sc-166966** or **Sox-15 (C-7): sc-166964**, our highly recommended monoclonal alternatives to Sox-15 (H-113).