

# Sox-21 (H-50): sc-20102

## BACKGROUND

Sox genes comprise a family of genes that are related to the mammalian sex determining gene SRY. These genes similarly contain sequences that encode for the HMG-box domain, which is responsible for the sequence-specific DNA-binding activity. Sox genes encode putative transcriptional regulators implicated in the decision of cell fates during development and the control of diverse developmental processes. The highly complex group of Sox genes cluster at a minimum of 40 different loci that rapidly diverged in various animal lineages. At present 30 Sox genes have been identified, and members of this family have been shown to be conserved during evolution and to play key roles during animal development. Some are involved in human diseases, including sex reversal.

## CHROMOSOMAL LOCATION

Genetic locus: SOX21 (human) mapping to 13q32.1; Sox21 (mouse) mapping to 14 E4.

## SOURCE

Sox-21 (H-50) is a rabbit polyclonal antibody raised against amino acids 177-276 mapping at the C-terminus of Sox-21 of human origin.

## PRODUCT

Each vial contains 200 µg IgG in 1.0 ml of PBS with < 0.1% sodium azide and 0.1% gelatin. Also available as TransCruz reagent for Gel Supershift and ChIP applications, sc-20102 X, 200 µg/0.1 ml.

## STORAGE

Store at 4° C, **\*\*DO NOT FREEZE\*\***. Stable for one year from the date of shipment. Non-hazardous. No MSDS required.

## APPLICATIONS

Sox-21 (H-50) is recommended for detection of Sox-21 of mouse, rat and human origin by Western Blotting (starting dilution 1:200, dilution range 1:100-1:1000), immunoprecipitation [1-2 µg per 100-500 µg of total protein (1 ml of cell lysate)], immunofluorescence (starting dilution 1:50, dilution range 1:50-1:500) and solid phase ELISA (starting dilution 1:30, dilution range 1:30-1:3000).

Sox-21 (H-50) is also recommended for detection of Sox-21 in additional species, including porcine.

Suitable for use as control antibody for Sox-21 siRNA (h): sc-38433, Sox-21 siRNA (m): sc-38434, Sox-21 shRNA Plasmid (h): sc-38433-SH, Sox-21 shRNA Plasmid (m): sc-38434-SH, Sox-21 shRNA (h) Lentiviral Particles: sc-38433-V and Sox-21 shRNA (m) Lentiviral Particles: sc-38434-V.

Sox-21 (H-50) X TransCruz antibody is recommended for Gel Supershift and ChIP applications.

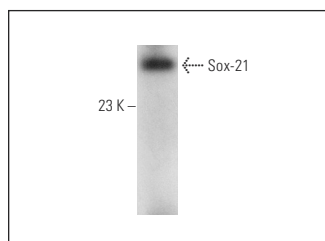
Molecular Weight of Sox-21: 29 kDa.

Positive Controls: mouse embryo extract: sc-364239, rat cerebellum extract: sc-2398 or mouse brain extract: sc-2253.

## RECOMMENDED SECONDARY REAGENTS

To ensure optimal results, the following support (secondary) reagents are recommended: 1) Western Blotting: use goat anti-rabbit IgG-HRP: sc-2004 (dilution range: 1:2000-1:100,000) or Cruz Marker™ compatible goat anti-rabbit IgG-HRP: sc-2030 (dilution range: 1:2000-1:5000), Cruz Marker™ Molecular Weight Standards: sc-2035, TBS Blotto A Blocking Reagent: sc-2333 and Western Blotting Luminol Reagent: sc-2048. 2) Immunoprecipitation: use Protein A/G PLUS-Agarose: sc-2003 (0.5 ml agarose/2.0 ml). 3) Immunofluorescence: use goat anti-rabbit IgG-FITC: sc-2012 (dilution range: 1:100-1:400) or goat anti-rabbit IgG-TR: sc-2780 (dilution range: 1:100-1:400) with UltraCruz™ Mounting Medium: sc-24941.

## DATA



Sox-21 (H-50): sc-20102. Western blot analysis of Sox-21 expression in mouse embryo tissue extract.

## RESEARCH USE

For research use only, not for use in diagnostic procedures.

## PROTOCOLS

See our web site at [www.scbt.com](http://www.scbt.com) or our catalog for detailed protocols and support products.

**MONOS**  
Satisfaction  
Guaranteed

Try **Sox-21 (2G10): sc-293461**, our highly recommended monoclonal alternative to Sox-21 (H-50).