

Sox-30 (H-300): sc-20104

BACKGROUND

Sox-30 (SRY (sex determining region Y)-box 30) encodes a member of the SOX (SRY-related HMG-box) family of transcription factors involved in the regulation of embryonic development and in the determination of the cell fate. Sox-30 is expressed in testis and may act as a transcriptional regulator after forming a protein complex with other proteins. Sox-30 may be involved in the differentiation of developing male germ cells. Two transcript variants encoding distinct isoforms have been identified for the human Sox-30 gene. Sox family transcription factors influence cell differentiation, development and sex determination. Sox-30 contains a unique DNA binding domain known as the high mobility group (HMG) box that is related to that of the testis determining gene SRY. The highly complex group of Sox genes cluster at a minimum of 40 different loci that rapidly diverged in various animal lineages. Several Sox genes have been identified, and members of this family have been shown to be conserved during evolution and to play key roles during animal development.

CHROMOSOMAL LOCATION

Genetic locus: SOX30 (human) mapping to 5q33.3; Sox30 (mouse) mapping to 11 B1.1.

SOURCE

Sox-30 (H-300) is a rabbit polyclonal antibody raised against amino acids 454-753 mapping at the C-terminus of Sox-30 of human origin.

PRODUCT

Each vial contains 200 µg IgG in 1.0 ml of PBS with < 0.1% sodium azide and 0.1% gelatin. Also available as TransCruz reagent for Gel Supershift and ChIP applications, sc-20104 X, 200 µg/0.1 ml.

RESEARCH USE

For research use only, not for use in diagnostic procedures.

APPLICATIONS

Sox-30 (H-300) is recommended for detection of Sox-30 of mouse, rat and human origin by Western Blotting (starting dilution 1:200, dilution range 1:100-1:1000), immunoprecipitation [1-2 µg per 100-500 µg of total protein (1 ml of cell lysate)], immunofluorescence (starting dilution 1:50, dilution range 1:50-1:500), immunohistochemistry (including paraffin-embedded sections) (starting dilution 1:50, dilution range 1:50-1:500) and solid phase ELISA (starting dilution 1:30, dilution range 1:30-1:3000).

Suitable for use as control antibody for Sox-30 siRNA (h): sc-36529, Sox-30 siRNA (m): sc-36530, Sox-30 shRNA Plasmid (h): sc-36529-SH, Sox-30 shRNA Plasmid (m): sc-36530-SH, Sox-30 shRNA (h) Lentiviral Particles: sc-36529-V and Sox-30 shRNA (m) Lentiviral Particles: sc-36530-V.

Sox-30 (H-300) X TransCruz antibody is recommended for Gel Supershift and ChIP applications.

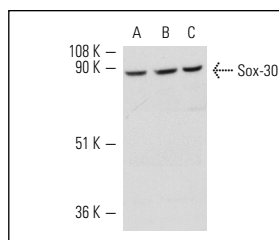
Molecular Weight of Sox-30: 94 kDa.

Positive Controls: A-431 nuclear extract: sc-2122, SK-N-MC nuclear extract: sc-2154 or IMR-32 nuclear extract: sc-2148.

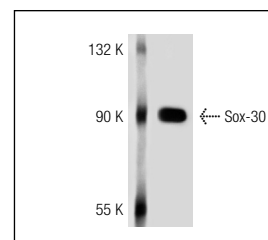
RECOMMENDED SECONDARY REAGENTS

To ensure optimal results, the following support (secondary) reagents are recommended: 1) Western Blotting: use goat anti-rabbit IgG-HRP: sc-2004 (dilution range: 1:2000-1:100,000) or Cruz Marker™ compatible goat anti-rabbit IgG-HRP: sc-2030 (dilution range: 1:2000-1:5000), Cruz Marker™ Molecular Weight Standards: sc-2035, TBS Blotto A Blocking Reagent: sc-2333 and Western Blotting Luminol Reagent: sc-2048. 2) Immunoprecipitation: use Protein A/G PLUS-Agarose: sc-2003 (0.5 ml agarose/2.0 ml). 3) Immunofluorescence: use goat anti-rabbit IgG-FITC: sc-2012 (dilution range: 1:100-1:400) or goat anti-rabbit IgG-TR: sc-2780 (dilution range: 1:100-1:400) with UltraCruz™ Mounting Medium: sc-24941. 4) Immunohistochemistry: use ImmunoCruz™: sc-2051 or ABC: sc-2018 rabbit IgG Staining Systems.

DATA



Sox-30 (H-300): sc-20104. Western blot analysis of Sox-30 expression in SK-N-MC (A), IMR-32 (B) and A-431 (C) nuclear extracts.



Sox-30 (H-300): sc-20104. Western blot analysis of Sox-30 expression in HeLa whole cell lysate.

STORAGE

Store at 4° C, **DO NOT FREEZE**. Stable for one year from the date of shipment. Non-hazardous. No MSDS required.

PROTOCOLS

See our web site at www.scbt.com or our catalog for detailed protocols and support products.

MONOS
Satisfaction
Guaranteed

Try **Sox-30 (G-1): sc-390333**, our highly recommended monoclonal alternative to Sox-30 (H-300).