

# GLI-2 (G-20): sc-20291

## BACKGROUND

Zinc-finger proteins contain DNA-binding domains and have a wide variety of functions, most of which encompass some form of transcriptional activation or repression. The majority of zinc-finger proteins contain a Krüppel-type DNA binding domain and a KRAB domain, which is thought to interact with KAP1, thereby recruiting histone modifying proteins. GLI-2 (GLI family zinc finger 2), also known as HPE9 or THP (tax helper protein), is a 1,586 amino acid nuclear protein that acts as a transcriptional activator and belongs to the GLI C<sub>2</sub>H<sub>2</sub>-type zinc-finger protein family. Localized to the nucleus, GLI-2 is thought to play a role in embryogenesis. The gene encoding GLI-2 maps to human chromosome 2q14.2, and when defective is the cause of holoprosencephaly type 9 (HPE9). GLI-2 exists as five alternatively spliced isoforms.

## CHROMOSOMAL LOCATION

Genetic locus: GLI2 (human) mapping to 2q14.2.

## SOURCE

GLI-2 (G-20) is an affinity purified goat polyclonal antibody raised against a peptide mapping within an internal region of GLI-2 of human origin.

## PRODUCT

Each vial contains 200 µg IgG in 1.0 ml of PBS with < 0.1% sodium azide and 0.1% gelatin.

Blocking peptide available for competition studies, sc-20291 P, (100 µg peptide in 0.5 ml PBS containing < 0.1% sodium azide and 0.2% BSA).

Available as TransCruz reagent for Gel Supershift and ChIP applications, sc-20291 X, 200 µg/0.1 ml and support products.

## APPLICATIONS

GLI-2 (G-20) is recommended for detection of GLI-2 of human origin by Western Blotting (starting dilution 1:200, dilution range 1:100-1:1000), immunoprecipitation [1-2 µg per 100-500 µg of total protein (1 ml of cell lysate)], immunofluorescence (starting dilution 1:50, dilution range 1:50-1:500) and solid phase ELISA (starting dilution 1:30, dilution range 1:30-1:3000).

Suitable for use as control antibody for GLI-2 siRNA (h): sc-37913, GLI-2 shRNA Plasmid (h): sc-37913-SH and GLI-2 shRNA (h) Lentiviral Particles: sc-37913-V.

GLI-2 (G-20) X TransCruz antibody is recommended for Gel Supershift and ChIP applications.

Molecular Weight of GLI-2 5/α/β/γ/δ isoforms: 168/133/132/88/86 kDa.

Positive Controls: K-562 whole cell lysate: sc-2203, TF-1 cell lysate: sc-2412 or HOS cell lysate: sc-2275.

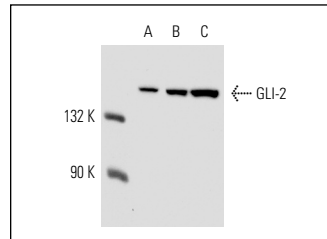
## STORAGE

Store at 4° C, **\*\*DO NOT FREEZE\*\***. Stable for one year from the date of shipment. Non-hazardous. No MSDS required.

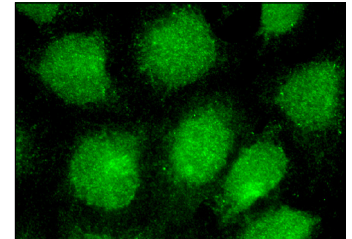
## RESEARCH USE

For research use only, not for use in diagnostic procedures.

## DATA



GLI-2 (G-20): sc-20291. Western blot analysis of GLI-2 expression in HOS (A), K-562 (B) and TF-1 (C) whole cell lysates.



GLI-2 (G-20): sc-20291. Immunofluorescence staining of methanol-fixed HeLa cells showing nuclear localization.

## SELECT PRODUCT CITATIONS

- Bhatia, N., et al. 2006. GLI-2 is targeted for ubiquitination and degradation by β-TrCP ubiquitin ligase. *J. Biol. Chem.* 281: 19320-19326.
- Dennler, S., et al. 2007. Induction of sonic hedgehog mediators by transforming growth factor-β: Smad3-dependent activation of GLI-2 and GLI-1 expression *in vitro* and *in vivo*. *Cancer Res.* 67: 6981-6986.
- Thiyagarajan, S., et al. 2007. Role of GLI-2 transcription factor in growth and tumorigenicity of prostate cells. *Cancer Res.* 67: 10642-10654.
- Clement, C.A., et al. 2009. The primary cilium coordinates early cardiogenesis and hedgehog signaling in cardiomyocyte differentiation. *J. Cell Sci.* 122: 3070-3082.
- Wall, D.S., et al. 2009. Progenitor cell proliferation in the retina is dependent on Notch-independent sonic hedgehog/Hes1 activity. *J. Cell Biol.* 184: 101-112.
- Alexaki, V.I., et al. 2010. GLI2-mediated melanoma invasion and metastasis. *J. Natl. Cancer Inst.* 102: 1148-1159.
- Nakamura, K., et al. 2010. Hedgehog promotes neovascularization in pancreatic cancers by regulating Ang-1 and IGF-1 expression in bone-marrow derived pro-angiogenic cells. *PLoS ONE* 5: e8824.
- Voronova, A., et al. 2011. Ascl1/Mash1 is a novel target of Gli2 during Gli2-induced neurogenesis in P19 EC cells. *PLoS ONE* 6: e19174.
- Voronova, A., et al. 2011. Gli2 and MEF2C activate each other's expression and function synergistically during cardiomyogenesis *in vitro*. *Nucleic Acids Res.* 40: 3329-3347.


 MONOS  
Satisfaction  
Guaranteed

Try **GLI-2 (C-10): sc-271786**, our highly recommended monoclonal alternative to GLI-2 (G-20). Also, for AC, HRP, FITC, PE, Alexa Fluor® 488 and Alexa Fluor® 647 conjugates, see **GLI-2 (C-10): sc-271786**.