

goat anti-mouse IgG_{2a}-B: sc-2073

BACKGROUND

Santa Cruz Biotechnology's secondary antibodies are available conjugated to either an enzyme, biotin or fluorophore for use in a variety of antibody-based applications including Western Blot, immunostaining, flow cytometry and ELISA. Secondary antibodies are commonly affinity purified against immobilized whole IgG or against antibody fragments. Santa Cruz Biotechnology offers isotype-specific secondary antibodies for immunohistochemistry and flow cytometry that specifically detect mouse immunoglobulin classes such as IgG₁, IgG_{2a}, IgG_{2b}, IgG₃, IgM and IgA. Isotype-specific secondary antibodies are available conjugated to either biotin, FITC (fluorescein isothiocyanate), Texas Red[®], TRITC (tetramethyl rhodamine iso-thiocyanate), PE (phycoerythrin), PerCP (peridinin chlorophyll protein complex) and PerCP-Cy5.5 (peridinin chlorophyll protein complex with cyanin-5.5).

SOURCE

goat anti-mouse IgG_{2a}-B is a pre-adsorbed, affinity purified secondary antibody raised in goat against mouse IgG_{2a} and conjugated to biotin.

PRODUCT

Each vial contains 200 µg mouse IgG_{2a} (pre-adsorbed with human IgG) in 0.5 ml of PBS containing 0.02% sodium azide.

APPLICATIONS

goat anti-mouse IgG_{2a}-B is recommended for detection of mouse IgG_{2a} by immunofluorescence staining (starting dilution: 1:100, dilution range: 1:100-1:400) and immunohistochemical staining (starting dilution: 1:100, dilution range: 1:100-1:400).

RECOMMENDED SUPPORT PRODUCTS

A. TISSUE CULTURE CELLS

- CrystalCruz™ Cover Glasses, 22 x 50 mm, precleaned: sc-24975
- CrystalCruz™ Micro Slides 75 x 25 mm; 72 frosted sides: sc-24976
- PBS (Phosphate Buffered Saline), powder, 1 packet: sc-24947
- Formaldehyde, 37% formaldehyde solution, 25 ml: sc-203049
- Hydrogen Peroxide, 30% solution, 100 ml: sc-203336

B. FROZEN TISSUE SECTIONS

- Organo/Limonene Mount, non-toxic alternative to Permount, 100 ml: sc-45087
- UltraCruz™ Mounting Medium, aqueous-based, 10 ml: sc-24941
- ImmunoHistoMount, aqueous-based mounting medium, 30 ml: sc-45086
- Immuno In Situ Mount, for use with in situ hybridization, 30 ml: sc-45088

C. FORMALIN-FIXED, PARAFFIN-EMBEDDED TISSUE SECTIONS

- Paraffin, for the preparation of tissue samples for staining, 500 g: sc-286633
- Xylenes, mixed isomers with ethylbenzene, 500 ml: sc-237422
- Hematoxylin, Gill's Formulation #2; nuclear counter stain, 100 ml: sc-24973

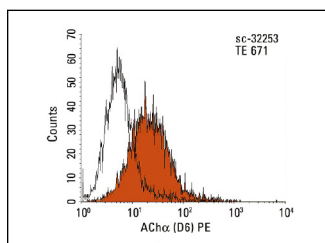
STORAGE

Store at 4° C, ****DO NOT FREEZE****. Stable for one year from the date of shipment. Non-hazardous. No MSDS required.

RESEARCH USE

For research use only, not for use in diagnostic procedures.

DATA



goat anti-mouse IgG_{2a}-B: sc-2073. Indirect FCM analysis of TE 671 cells stained with AChRα (D6), followed by biotin-conjugated goat anti-mouse IgG_{2a}- sc-2073, then Avidin-PE: sc-2876. Black line histogram represents the isotype control, normal mouse IgG_{2a}: sc-3876. Antibody tested: AChRα (D6): sc-32253.

SELECT PRODUCT CITATIONS

- Taylor-Edwards, C.C., et al. 2011. Glucagon-like peptide-2 (GLP-2) increases small intestinal blood flow and mucosal growth in ruminating calves. *J. Dairy Sci.* 94: 888-898.

PROTOCOLS

See our web site at www.scbt.com or our catalog for detailed protocols and support products.

Texas Red[®] is a registered trademark of Molecular Probes (6/02).