

EphA1 (H-120): sc-20738

BACKGROUND

The Eph subfamily represents the largest group of receptor protein tyrosine kinases identified to date. While the biological activities of these receptors have yet to be determined, there is increasing evidence that they are involved in central nervous system function and in development. The Eph subfamily receptors of human origin (and their murine/avian homologs) include EphA1 (Eph), EphA2 (Eck), EphA3 (Hek4), EphA4 (Hek8), EphA5 (Hek7), EphA6 (Hek12), EphA7 (Hek11/MDK1), EphA8 (Hek3), EphB1 (Hek6), EphB2 (Hek5), EphB3 (Cek10, Hek2), EphB4 (Htk), EphB5 (Hek9) and EphB6 (Mep). Ligands for Eph receptors include ephrin-A4 (LERK-4) which binds EphA3 and EphB1. In addition, ephrin-A2 (ELF-1) has been described as the ligand for EphA4, ephrin-A3 (Ehk1-L) as the ligand for EphA5 and ephrin-B2 (Htk-L) as the ligand for EphB4 (Htk).

REFERENCES

1. Beckmann, M.P., et al. 1994. Molecular characterization of a family of ligands for Eph-related tyrosine kinase receptors. *EMBO J.* 13: 3757-3762.
2. Cheng, H.J., et al. 1994. Identification and cloning of ELF-1, a developmentally expressed ligand for the Mek4 and Sek receptor tyrosine kinases. *Cell* 79: 157-168.

CHROMOSOMAL LOCATION

Genetic locus: EPHA1 (human) mapping to 7q34; EphA1 (mouse) mapping to 6 B2.1.

SOURCE

EphA1 (H-120) is a rabbit polyclonal antibody raised against amino acids 511-630 of EphA1 of human origin.

PRODUCT

Each vial contains 200 µg IgG in 1.0 ml of PBS with < 0.1% sodium azide and 0.1% gelatin.

APPLICATIONS

EphA1 (H-120) is recommended for detection of EphA1 of mouse, rat and human origin by Western Blotting (starting dilution 1:200, dilution range 1:100-1:1000), immunoprecipitation [1–2 µg per 100–500 µg of total protein (1 ml of cell lysate)], immunofluorescence (starting dilution 1:50, dilution range 1:50-1:500) and solid phase ELISA (starting dilution 1:30, dilution range 1:30-1:3000).

EphA1 (H-120) is also recommended for detection of EphA1 in additional species, including equine and canine.

Suitable for use as control antibody for EphA1 siRNA (h): sc-35318, EphA1 siRNA (m): sc-35319, EphA1 shRNA Plasmid (h): sc-35318-SH, EphA1 shRNA Plasmid (m): sc-35319-SH, EphA1 shRNA (h) Lentiviral Particles: sc-35318-V and EphA1 shRNA (m) Lentiviral Particles: sc-35319-V.

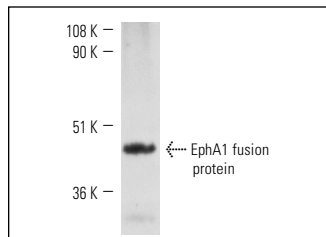
Molecular Weight of EphA1: 180 kDa.

Positive Controls: T47D cell lysate: sc-2293, SW480 cell lysate: sc-2219 or A549 cell lysate: sc-2413.

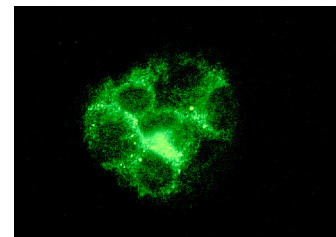
RECOMMENDED SECONDARY REAGENTS

To ensure optimal results, the following support (secondary) reagents are recommended: 1) Western Blotting: use goat anti-rabbit IgG-HRP: sc-2004 (dilution range: 1:2000-1:100,000) or Cruz Marker™ compatible goat anti-rabbit IgG-HRP: sc-2030 (dilution range: 1:2000-1:5000), Cruz Marker™ Molecular Weight Standards: sc-2035, TBS Blotto A Blocking Reagent: sc-2333 and Western Blotting Luminol Reagent: sc-2048. 2) Immunoprecipitation: use Protein A/G PLUS-Agarose: sc-2003 (0.5 ml agarose/2.0 ml). 3) Immunofluorescence: use goat anti-rabbit IgG-FITC: sc-2012 (dilution range: 1:100-1:400) or goat anti-rabbit IgG-TR: sc-2780 (dilution range: 1:100-1:400) with UltraCruz™ Mounting Medium: sc-24941.

DATA



EphA1 (H-120): sc-20738. Western blot analysis of human recombinant EphA1 fusion protein.



EphA1 (H-120): sc-20738. Immunofluorescence staining of methanol-fixed Hep G2 cells showing membrane localization.

STORAGE

Store at 4° C, ****DO NOT FREEZE****. Stable for one year from the date of shipment. Non-hazardous. No MSDS required.

RESEARCH USE

For research use only, not for use in diagnostic procedures.

PROTOCOLS

See our web site at www.scbt.com or our catalog for detailed protocols and support products.

MONOS
Satisfaction
Guaranteed

Try **EphA1 (5D2A10): sc-65994**, our highly recommended monoclonal alternative to EphA1 (H-120).