

Laminin β -2 (H-300): sc-20777

BACKGROUND

The laminins comprise a growing family of disulfide-linked heterotrimers consisting of three genetically distinct polypeptide chains, designated α , β and γ . A major component of the basal lamina, laminins play a crucial role in providing a scaffolding upon which tissues are assembled and which serves as a physical barrier separating specialized tissues. During embryogenesis and early development, cells migrate along basement membranes, which are required for the polarization of cells. The Laminin β -2 chain plays a role in melanoma spread, promoting tumor migration along the abluminal surface of a vessel, a phenomenon which has been termed extra-vascular migratory metastasis.

REFERENCES

1. Yurchenco, P.D. and O'Rear, J.J. 1994. Basal lamina assembly. *Curr. Opin. Cell Biol.* 6: 674-681.
2. Engvall, E. 1995. Structure and function of basement membranes. *Intl. J. Dev. Biol.* 39: 781-787.
3. Aumailley, M. and Krieg, T. 1996. Laminins: a family of diverse multifunctional molecules of basement membranes. *J. Invest. Dermatol.* 106: 209-214.
4. Nomizu, M., Utani, A., Beck, K., Otaka, A., Roller, P.P. and Yamada, Y. 1996. Mechanism of Laminin chain assembly into a triple-stranded coiled-coil structure. *Biochemistry* 35: 2885-2893.
5. Ziober, B.L., Lin, C.S. and Kramer, R.H. 1996. Laminin-binding integrins in tumor progression and metastasis. *Sem. Cancer Biol.* 7: 119-128.
6. Ancsin, J.B. and Kisilevsky, R. 1996. Laminin interactions important for basement membrane assembly are promoted by zinc and implicate Laminin zinc finger-like sequences. *J. Biol. Chem.* 271: 6845-6851.
7. Durkin, M.E., Gautam, M., Loechel, F., Sanes, J.R., Merlie, J.P., Albrechtsen, R. and Wewer, U.M. 1996. Structural organization of the human and mouse Laminin β -2 chain genes, and alternative splicing at the 5' end of the human transcript. *J. Biol. Chem.* 271: 13407-13416.
8. Vogel, W., Kanz, L., Brugger, W., Berndt, A. and Kosmehl, H. 1999. Expression of Laminin β -2 chain in normal human bone marrow. *Blood* 94: 1143-1145.
9. Libby, R.T., Lavallee, C.R., Balkema, G.W., Brunken, W.J. and Hunter, D.D. 1999. Disruption of Laminin β -2 chain production causes alterations in morphology and function in the CNS. *J. Neurosci.* 19: 9399-9411.

CHROMOSOMAL LOCATION

Genetic locus: LAMB2 (human) mapping to 3p21.31; Lamb2 (mouse) mapping to 9 F2.

SOURCE

Laminin β -2 (H-300) is a rabbit polyclonal antibody raised against amino acids 1549-1798 mapping at the C-terminus of Laminin β -2 of human origin.

PRODUCT

Each vial contains 200 μ g IgG in 1.0 ml of PBS with < 0.1% sodium azide and 0.1% gelatin.

APPLICATIONS

Laminin β -2 (H-300) is recommended for detection of Laminin β -2 of mouse, rat and human origin by Western Blotting (starting dilution 1:200, dilution range 1:100-1:1000), immunoprecipitation [1-2 μ g per 100-500 μ g of total protein (1 ml of cell lysate)], immunofluorescence (starting dilution 1:50, dilution range 1:50-1:500) and solid phase ELISA (starting dilution 1:30, dilution range 1:30-1:3000).

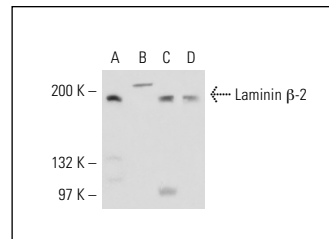
Laminin β -2 (H-300) is also recommended for detection of Laminin β -2 in additional species, including equine, canine and bovine.

Suitable for use as control antibody for Laminin β -2 siRNA (h): sc-35784, Laminin β -2 siRNA (m): sc-35785, Laminin β -2 shRNA Plasmid (h): sc-35784-SH, Laminin β -2 shRNA Plasmid (m): sc-35785-SH, Laminin β -2 shRNA (h) Lentiviral Particles: sc-35784-V and Laminin β -2 shRNA (m) Lentiviral Particles: sc-35785-V.

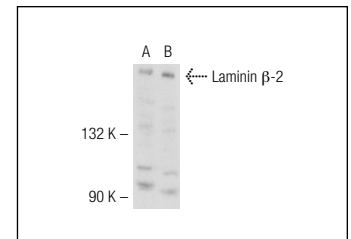
Molecular Weight of Laminin β -2: 200 kDa.

Positive Controls: Laminin β -2 (m): 293T Lysate: sc-121282, HeLa whole cell lysate: sc-2200 or DU 145 cell lysate: sc-2268.

DATA



Laminin β -2 (H-300): sc-20777. Western blot analysis of Laminin β -2 expression in HeLa (A), HT-1080 (B), LNCap (C) and DU 145 (D) whole cell lysates.



Laminin β -2 (H-300): sc-20777. Western blot analysis of Laminin β -2 expression in non-transfected: sc-117752 (A) and mouse Laminin β -2 transfected: sc-121282 (B) 293T whole cell lysates.

STORAGE

Store at 4° C, ****DO NOT FREEZE****. Stable for one year from the date of shipment. Non-hazardous. No MSDS required.

RESEARCH USE

For research use only, not for use in diagnostic procedures.



Try **Laminin β -2 (C4): sc-59980** or **Laminin β -2 (H-1): sc-133241**, our highly recommended monoclonal alternatives to Laminin β -2 (H-300).