

goat anti-mouse IgG₁-FITC: sc-2078

BACKGROUND

Santa Cruz Biotechnology's secondary antibodies are available conjugated to either an enzyme, biotin or fluorophore for use in a variety of antibody-based applications including Western Blot, immunostaining, flow cytometry and ELISA. Secondary antibodies are commonly affinity purified against immobilized whole IgG or against antibody fragments. Santa Cruz Biotechnology offers isotype-specific secondary antibodies for immunohistochemistry and flow cytometry that specifically detect mouse immunoglobulin classes such as IgG₁, IgG_{2a}, IgG_{2b}, IgG₃, IgM and IgA. Isotype-specific secondary antibodies are available conjugated to either biotin, FITC (fluorescein isothiocyanate), Texas Red®, TRITC (tetramethyl rhodamine iso-thiocyanate), PE (phycoerythrin), PerCP (peridinin chlorophyll protein complex) and PerCP-Cy5.5 (peridinin chlorophyll protein complex with cyanin-5.5).

SOURCE

goat anti-mouse IgG₁-FITC is a pre-adsorbed, affinity purified secondary antibody raised in goat against mouse IgG₁ and conjugated to FITC (fluorescein isothiocyanate).

PRODUCT

Each vial contains 200 µg mouse IgG₁ (pre-adsorbed with human IgG) in 0.5 ml of either PBS containing 0.02% sodium azide (for IF) or PBS containing 0.1% Gel and 0.1% sodium azide (for FCM).

APPLICATIONS

goat anti-mouse IgG₁-FITC is recommended for detection of mouse IgG₁ by immunofluorescence staining (starting dilution: 1:100, dilution range: 1:100-1:400), immunohistochemical staining (starting dilution: 1:100, dilution range: 1:100-1:400) and flow cytometry (0.5-1 µg per 1 x 10⁶ cells).

RECOMMENDED SUPPORT PRODUCTS

A. TISSUE CULTURE CELLS

- CrystalCruz™ Cover Glasses, 22 x 50 mm, precleaned: sc-24975
- CrystalCruz™ Micro Slides 75 x 25 mm; 72 frosted sides: sc-24976
- PBS (Phosphate Buffered Saline), powder, 1 packet: sc-24947
- Hydrogen Peroxide, 30% solution, 100 ml: sc-203336

B. FROZEN TISSUE SECTIONS

- Organo/Limonene Mount, non-toxic alternative to Permount, 100 ml: sc-45087
- UltraCruz™ Mounting Medium, aqueous-based, 10 ml: sc-24941
- ImmunoHistoMount, aqueous-based mounting medium, 30 ml: sc-45086
- Immuno *In Situ* Mount, for use with *in situ* hybridization, 30 ml: sc-45088

C. FORMALIN-FIXED, PARAFFIN-EMBEDDED TISSUE SECTIONS

- Xylenes, mixed isomers with ethylbenzene, 500 ml: sc-237422
- Hematoxylin, Gill's Formulation #2; nuclear counter stain, 100 ml: sc-24973

RESEARCH USE

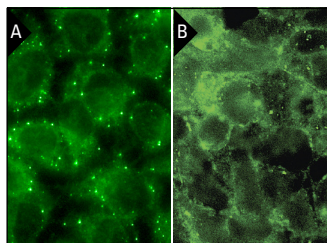
For research use only, not for use in diagnostic procedures.

Texas Red® is a registered trademark of Molecular Probes (6/02).

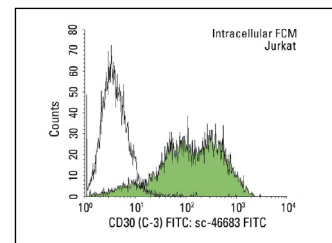
STORAGE

Store at 4° C. ****DO NOT FREEZE****. Stable for one year from the date of shipment. Non-hazardous. No MSDS required.

DATA



goat anti-mouse IgG₁-FITC: sc-2078. Immunofluorescence staining of methanol-fixed HeLa cells showing cytoplasmic and mRNA processing body (p-body) localization. Antibody tested: Edc3 (D-6): sc-365024 (A). Immunofluorescence staining of methanol-fixed Hep G2 cells showing membrane localization. Antibody tested: LPL (5D2): sc-73646 (B).



goat anti-mouse IgG₁-FITC: sc-2078. Indirect, intracellular FCM analysis of fixed and permeabilized PMA-induced Jurkat cells stained with CD30 (C-3), followed by FITC-conjugated goat anti-mouse IgG₁: sc-2078. Black line histogram represents the isotype control, normal mouse IgG₁: sc-3877. Antibody tested: CD30 (C-3): sc-46683.

SELECT PRODUCT CITATIONS

- Hermann, A., et al. 2001. Platelet CD40 ligand (CD40L)—subcellular localization, regulation of expression, and inhibition by clopidogrel. *Platelets* 12: 74-82.
- Tu, X., et al. 2002. Nuclear translocation of Insulin receptor substrate-1 by oncogenes and Igf-I. Effect on ribosomal RNA synthesis. *J. Biol. Chem.* 277: 44357-44365.
- Desbarats, J., et al. 2003. Fas engagement induces neurite growth through ERK activation and p35 upregulation. *Nat. Cell Biol.* 5: 118-125.
- Jackson, S.J., et al. 2004. Sulforaphane: a naturally occurring mammary carcinoma mitotic inhibitor, which disrupts tubulin polymerization. *Carcinogenesis* 25: 219-227.
- Chen, J., et al. 2005. Functional significance of type 1 Insulin-like growth factor-mediated nuclear translocation of the Insulin receptor substrate-1 and β-Catenin. *J. Biol. Chem.* 33: 29912-29920.
- Mandal, S., et al. 2007. A new platinum complex of triazine demonstrates G₁ arrest with novel biological profile in human breast cancer cell line, MDA-MB-468. *Bioorg. Med. Chem. Lett.* 17: 2139-2145.
- Heinzel, F.R., et al. 2008. Inducible nitric oxide synthase expression and cardiomyocyte dysfunction during sustained moderate ischemia in pigs. *Circ. Res.* 103: 1120-1127.
- Naviaux, R.K., et al. 2009. Retained features of embryonic metabolism in the adult MRL mouse. *Mol. Genet. Metab.* 96: 133-144.
- Gailhouse, L., et al. 2010. Fibrillar collagen scoring by second harmonic microscopy: a new tool in the assessment of liver fibrosis. *J. Hepatol.* 52: 398-406.
- Wu, S., et al. 2011. Proepithelin stimulates growth plate chondrogenesis via nuclear factor-κB-p65-dependent mechanisms. *J. Biol. Chem.* 286: 24057-24067.