

# goat anti-mouse IgG<sub>2b</sub>-FITC: sc-2080

## BACKGROUND

Santa Cruz Biotechnology's secondary antibodies are available conjugated to either an enzyme, biotin or fluorophore for use in a variety of antibody-based applications including Western Blot, immunostaining, flow cytometry and ELISA. Secondary antibodies are commonly affinity purified against immobilized whole IgG or against antibody fragments. Santa Cruz Biotechnology offers isotype-specific secondary antibodies for immunohistochemistry and flow cytometry that specifically detect mouse immunoglobulin classes such as IgG<sub>1</sub>, IgG<sub>2a</sub>, IgG<sub>2b</sub>, IgG<sub>3</sub>, IgM and IgA. Isotype-specific secondary antibodies are available conjugated to either biotin, FITC (fluorescein isothiocyanate), Texas Red<sup>®</sup>, TRITC (tetramethyl rhodamine iso-thiocyanate), PE (phycoerythrin), PerCP (peridinin chlorophyll protein complex) and PerCP-Cy5.5 (peridinin chlorophyll protein complex with cyanin-5.5).

## SOURCE

goat anti-mouse IgG<sub>2b</sub>-FITC is a pre-adsorbed, affinity purified secondary antibody raised in goat against mouse IgG<sub>2b</sub> and conjugated to FITC (fluorescein isothiocyanate).

## PRODUCT

Each vial contains 200 µg mouse IgG<sub>2b</sub> (pre-adsorbed with human IgG) in 0.5 ml of either PBS containing 0.02% sodium azide (for IF) or PBS containing 0.1% Gel and 0.1% sodium azide (for FCM).

## APPLICATIONS

goat anti-mouse IgG<sub>2b</sub>-FITC is recommended for detection of mouse IgG<sub>2b</sub> by immunofluorescence staining (starting dilution: 1:100, dilution range: 1:100-1:400), immunohistochemical staining (starting dilution: 1:100, dilution range: 1:100-1:400) and flow cytometry (0.5-1 µg per 1 x 10<sup>6</sup> cells).

## RECOMMENDED SUPPORT PRODUCTS

### A. TISSUE CULTURE CELLS

- CrystalCruz™ Cover Glasses, 22 x 50 mm, precleaned: sc-24975
- CrystalCruz™ Micro Slides 75 x 25 mm; 72 frosted sides: sc-24976
- PBS (Phosphate Buffered Saline), powder, 1 packet: sc-24947
- Hydrogen Peroxide, 30% solution, 100 ml: sc-203336

### B. FROZEN TISSUE SECTIONS

- Organo/Limonene Mount, non-toxic alternative to Permount, 100 ml: sc-45087
- UltraCruz™ Mounting Medium, aqueous-based, 10 ml: sc-24941
- ImmunoHistoMount, aqueous-based mounting medium, 30 ml: sc-45086
- Immuno In Situ Mount, for use with in situ hybridization, 30 ml: sc-45088

### C. FORMALIN-FIXED, PARAFFIN-EMBEDDED TISSUE SECTIONS

- Paraffin, for the preparation of tissue samples for staining, 500 g: sc-286633
- Xylenes, mixed isomers with ethylbenzene, 500 ml: sc-237422
- Hematoxylin, Gill's Formulation #2; nuclear counter stain, 100 ml: sc-24973

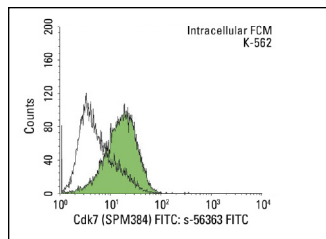
## RESEARCH USE

For research use only, not for use in diagnostic procedures.

## STORAGE

Store at 4° C, **\*\*DO NOT FREEZE\*\***. Stable for one year from the date of shipment. Non-hazardous. No MSDS required.

## DATA



goat anti-mouse IgG<sub>2b</sub>-FITC: sc-2080. Indirect, intracellular FCM analysis of fixed and permeabilized K-562 cells stained with Cdk7 (SPM384), followed by FITC-conjugated goat anti-mouse IgG<sub>2b</sub>: sc-2080. Black line histogram represents the isotype control, normal mouse IgG<sub>2b</sub>: sc-3879. Antibody tested: Cdk7 (SPM384): sc-56363.

## SELECT PRODUCT CITATIONS

- Kulman, J.D., et al. 2007. Proline-rich Gla protein 2 is a cell-surface vitamin K-dependent protein that binds to the transcriptional coactivator Yes-associated protein. *Proc. Natl. Acad. Sci. USA* 104: 8767-8772.

## PROTOCOLS

See our web site at [www.scbt.com](http://www.scbt.com) or our catalog for detailed protocols and support products.

Texas Red<sup>®</sup> is a registered trademark of Molecular Probes (6/02).