

CD43 (H-300): sc-20819

BACKGROUND

Over 100 cell surface markers have been identified through the use of monoclonal antibodies. Many of these markers have proven useful in identifying a specific subpopulation of cells within a mixed colony. Accordingly, these molecules have been assigned a "cluster of differentiation" (CD) designation. CD43 is the major O-glycosylated cell-surface associated sialoglycoprotein found on the cell membranes of leukocytes. It is a member of the surface mucin family which plays a central role in cellular adhesion tumor progression. Also called leukosialin, CD43 is best known as a marker for identifying normal and neoplastic T cells and a subset of neoplastic B cells within tissues. CD43 is thought to function as a negative regulator of cellular adhesion.

REFERENCES

- Holter, W., et al. 1991. Phenotypical and functional characterization of leukocytes — the CD-system. *Wien. Klin. Wochenschr.* 103: 247-262.
- Kim, Y.B., et al. 1994. CD11/CD18 panel report for swine CD workshop. *Vet. Immunol. Immunopathol.* 43: 289-291.
- Baekstrom, D., et al. 1995. Expression of the leukocyte-associated sialoglycoprotein CD43 by a colon carcinoma cell line. *J. Biol. Chem.* 270: 13688-13692.

CHROMOSOMAL LOCATION

Genetic locus: SPN (human) mapping to 16p11.2; Spn (mouse) mapping to 7 F3.

SOURCE

CD43 (H-300) is a rabbit polyclonal antibody raised against amino acids 101-400 mapping at the C-terminus of CD43 of human origin.

PRODUCT

Each vial contains 200 µg IgG in 1.0 ml of PBS with < 0.1% sodium azide and 0.1% gelatin.

APPLICATIONS

CD43 (H-300) is recommended for detection of CD43 of human and, to a lesser extent, mouse and rat origin by Western Blotting (starting dilution 1:200, dilution range 1:100-1:1000), immunoprecipitation [1-2 µg per 100-500 µg of total protein (1 ml of cell lysate)], immunofluorescence (starting dilution 1:50, dilution range 1:50-1:500) and solid phase ELISA (starting dilution 1:30, dilution range 1:30-1:3000).

Suitable for use as control antibody for CD43 siRNA (h): sc-29999, CD43 siRNA (m): sc-37247, CD43 shRNA Plasmid (h): sc-29999-SH, CD43 shRNA Plasmid (m): sc-37247-SH, CD43 shRNA (h) Lentiviral Particles: sc-29999-V and CD43 shRNA (m) Lentiviral Particles: sc-37247-V.

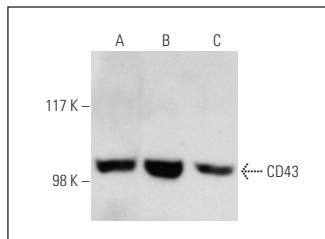
Molecular Weight of CD43: 115-130 kDa.

Positive Controls: Jurkat whole cell lysate: sc-2204, Ramos cell lysate: sc-2216 or K-562 whole cell lysate: sc-2203.

RECOMMENDED SECONDARY REAGENTS

To ensure optimal results, the following support (secondary) reagents are recommended: 1) Western Blotting: use goat anti-rabbit IgG-HRP: sc-2004 (dilution range: 1:2000-1:100,000) or Cruz Marker™ compatible goat anti-rabbit IgG-HRP: sc-2030 (dilution range: 1:2000-1:5000), Cruz Marker™ Molecular Weight Standards: sc-2035, TBS Blotto A Blocking Reagent: sc-2333 and Western Blotting Luminol Reagent: sc-2048. 2) Immunoprecipitation: use Protein A/G PLUS-Agarose: sc-2003 (0.5 ml agarose/2.0 ml). 3) Immunofluorescence: use goat anti-rabbit IgG-FITC: sc-2012 (dilution range: 1:100-1:400) or goat anti-rabbit IgG-TR: sc-2780 (dilution range: 1:100-1:400) with UltraCruz™ Mounting Medium: sc-24941.

DATA



CD43 (H-300): sc-20819. Western blot analysis of CD43 expression in Jurkat (A), K-562 (B) and Ramos (C) whole cell lysates.

SELECT PRODUCT CITATIONS

- Lecce, L., et al. 2010. CD43 is relocated from the basal to the apical plasma membrane of rat uterine epithelial cells by progesterone. *Histochem. Cell Biol.* 133: 549-555.

STORAGE

Store at 4° C, ****DO NOT FREEZE****. Stable for one year from the date of shipment. Non-hazardous. No MSDS required.

RESEARCH USE

For research use only, not for use in diagnostic procedures.

PROTOCOLS

See our web site at www.scbt.com or our catalog for detailed protocols and support products.


 MONOS
Satisfation
Guaranteed

Try **CD43 (DF-T1): sc-6256** or **CD43 (W3/13): sc-53044**, our highly recommended monoclonal alternatives to CD43 (H-300).