

goat anti-mouse IgM-FITC: sc-2082

BACKGROUND

Santa Cruz Biotechnology's secondary antibodies are available conjugated to either an enzyme, biotin or fluorophore for use in a variety of antibody-based applications including Western Blot, immunostaining, flow cytometry and ELISA. Secondary antibodies are commonly affinity purified against immobilized whole IgG or against antibody fragments. Santa Cruz Biotechnology offers isotype-specific secondary antibodies for immunohistochemistry and flow cytometry that specifically detect mouse immunoglobulin classes such as IgG₁, IgG_{2a}, IgG_{2b}, IgG₃, IgM and IgA. Isotype-specific secondary antibodies are available conjugated to either biotin, FITC (fluorescein isothiocyanate), Texas Red[®], TRITC (tetramethyl rhodamine iso-thiocyanate), PE (phycoerythrin), PerCP (peridinin chlorophyll protein complex) and PerCP-Cy5.5 (peridinin chlorophyll protein complex with cyanin-5.5).

SOURCE

goat anti-mouse IgM-FITC is a pre-adsorbed, affinity purified secondary antibody raised in goat against mouse IgM and conjugated to FITC (fluorescein isothiocyanate).

PRODUCT

Each vial contains 200 µg mouse IgM (pre-adsorbed with human IgG) in 0.5 ml of either PBS containing 0.02% sodium azide (for IF), or PBS containing 0.1% gel and 0.1% sodium azide (for FCM).

APPLICATIONS

goat anti-mouse IgM-FITC is recommended for detection of mouse IgM by immunofluorescence staining (starting dilution: 1:100, dilution range: 1:100-1:400), immunohistochemical staining (starting dilution: 1:100, dilution range: 1:100-1:400) and flow cytometry (0.5-1 µg per 1 x 10⁶ cells).

RECOMMENDED SUPPORT PRODUCTS

A. TISSUE CULTURE CELLS

- CrystalCruz[™] Cover Glasses, 22 x 50 mm, precleaned: sc-24975
- CrystalCruz[™] Micro Slides 75 x 25 mm; 72 frosted sides: sc-24976
- PBS (Phosphate Buffered Saline), powder, 1 packet: sc-24947
- Formaldehyde, 37% formaldehyde solution, 25 ml: sc-203049
- Hydrogen Peroxide, 30% solution, 100 ml: sc-203336

B. FROZEN TISSUE SECTIONS

- Organo/Limonene Mount, non-toxic alternative to Permount, 100 ml: sc-45087
- UltraCruz[™] Mounting Medium, aqueous-based, 10 ml: sc-24941
- ImmunoHistoMount, aqueous-based mounting medium, 30 ml: sc-45086
- Immuno *In Situ* Mount, for use with *in situ* hybridization, 30 ml: sc-45088

C. FORMALIN-FIXED, PARAFFIN-EMBEDDED TISSUE SECTIONS

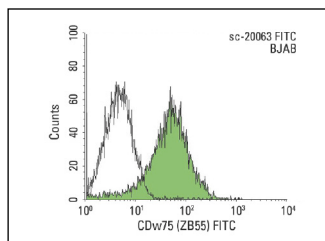
- Paraffin, for the preparation of tissue samples for staining, 500 g: sc-286633
- Xylenes, mixed isomers with ethylbenzene, 500 ml: sc-237422
- Hematoxylin, Gill's Formulation #2; nuclear counter stain, 100 ml: sc-24973

Texas Red[®] is a registered trademark of Molecular Probes (6/02).

STORAGE

Store at 4° C, ****DO NOT FREEZE****. Stable for one year from the date of shipment. Non-hazardous. No MSDS required.

DATA



goat anti-mouse IgM-FITC: sc-2082. Indirect FCM analysis of B220 cells stained with CDw75 (ZB55), followed by FITC-conjugated goat anti-mouse IgM: sc-2082. Black line histogram represents the isotype control, normal mouse IgM: sc-3881. Antibody tested: CDw75 (ZB55): sc-20063.

SELECT PRODUCT CITATIONS

- Lu, Y., et al. 2006. Inducible expression of AML1-ETO fusion protein endows leukemic cells with susceptibility to extrinsic and intrinsic apoptosis. *Leukemia* 20: 987-993.
- Castiglione, M., et al. 2008. Group I metabotropic glutamate receptors control proliferation, survival and differentiation of cultured neural progenitor cells isolated from the subventricular zone of adult mice. *Neuropharmacology* 55: 560-567.
- Kamnasaran, D., et al. 2008. Characterization and transformation potential of "Synthetic" astrocytes differentiated from murine embryonic stem cells. *Glia* 56: 457-470.
- Little, D., et al. 2010. Ligament-derived matrix stimulates a ligamentous phenotype in human adipose-derived stem cells. *Tissue Eng. Part A* 16: 2307-2319.

RESEARCH USE

For research use only, not for use in diagnostic procedures.

PROTOCOLS

See our web site at www.scbt.com or our catalog for detailed protocols and support products.