

goat anti-mouse IgG-R: sc-2092

BACKGROUND

Santa Cruz Biotechnology's secondary antibodies are available conjugated to either an enzyme, biotin or fluorophore for use in a variety of antibody-based applications including Western Blot, immunostaining, flow cytometry and ELISA. Secondary antibodies are commonly affinity purified against immobilized whole IgG or against antibody fragments. Santa Cruz Biotechnology offers an extensive selection of secondary antibodies optimized for immunohistochemistry and flow cytometry, and are labeled with either biotin, FITC (fluorescein isothiocyanate), Texas Red[®], TRITC (tetramethyl rhodamine iso-thiocyanate), PE (phycoerythrin), PerCP (peridinin chlorophyll protein complex) and PerCP-Cy5.5 (peridinin chlorophyll protein complex with cyanin-5.5). Immunohistochemistry and flow cytometry secondary antibodies are specific for commonly used primary antibody species, including goat, rabbit, mouse and rat.

SOURCE

goat anti-mouse IgG-R is a pre-adsorbed, affinity purified secondary antibody raised in goat against mouse IgG and conjugated to rhodamine.

PRODUCT

Each vial contains 200 µg mouse IgG (pre-adsorbed with human IgG) in 0.5 ml of PBS containing 0.02% sodium azide.

APPLICATIONS

goat anti-mouse IgG-R is recommended for detection of mouse IgG by immunofluorescence staining (starting dilution: 1:100, dilution range: 1:100-1:400) and immunohistochemical staining (starting dilution: 1:100, dilution range: 1:100-1:400).

RECOMMENDED SUPPORT PRODUCTS

A. TISSUE CULTURE CELLS

- CrystalCruz[™] Cover Glasses, 22 x 50 mm, precleaned: sc-24975
- CrystalCruz[™] Micro Slides 75 x 25 mm; 72 frosted sides: sc-24976
- PBS (Phosphate Buffered Saline), powder, 1 packet: sc-24947
- Hydrogen Peroxide, 30% solution, 100 ml: sc-203336

B. FROZEN TISSUE SECTIONS

- Organo/Limonene Mount, non-toxic alternative to Permount, 100 ml: sc-45087
- UltraCruz[™] Mounting Medium, aqueous-based, 10 ml: sc-24941
- ImmunoHistoMount, aqueous-based mounting medium, 30 ml: sc-45086
- Immuno *In Situ* Mount, for use with *in situ* hybridization, 30 ml: sc-45088

C. FORMALIN-FIXED, PARAFFIN-EMBEDDED TISSUE SECTIONS

- Paraffin, for the preparation of tissue samples for staining, 500 g: sc-286633
- Xylenes, mixed isomers with ethylbenzene, 500 ml: sc-237422
- Hematoxylin, Gill's Formulation #2; nuclear counter stain, 100 ml: sc-24973

RESEARCH USE

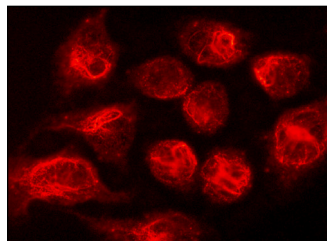
For research use only, not for use in diagnostic procedures.

Texas Red[®] is a registered trademark of Molecular Probes (6/02).

STORAGE

Store at 4° C, ****DO NOT FREEZE****. Stable for one year from the date of shipment. Non-hazardous. No MSDS required.

DATA



goat anti-mouse IgG-R: sc-2092. Immunofluorescence staining of methanol-fixed HeLa cells showing nuclear staining. Antibody tested: E2F-4 (RK-13): sc-511.

SELECT PRODUCT CITATIONS

- Fujiwara, H., et al. 2002. Human endometrial epithelial cells express ephrin A1: possible interaction between human blastocysts and endometrium via Eph-ephrin system. *J. Clin. Endocrin. Metab.* 87: 5801-5807.
- Mosqueda, J., et al. 2002. *Babesia bovis* merozoite surface antigen 2 proteins are expressed on the merozoite and sporozoite surface, and specific antibodies inhibit attachment and invasion of erythrocytes. *Infect. Immun.* 70: 6448-6455.
- Wang, L.J., et al. 2002. Neuroprotective effects of glial cell line-derived neurotrophic factor mediated by an adeno-associated virus vector in a transgenic animal model of amyotrophic lateral sclerosis. *J. Neurosci.* 22: 6920-6928.
- Sato, Y., et al. 2005. Platelet-derived soluble factors induce human extravillous trophoblast migration and differentiation: platelets are a possible regulator of trophoblast infiltration into maternal spiral arteries. *Blood* 106: 428-435.
- Bix, G., et al. 2006. Endorepellin *in vivo*: targeting the tumor vasculature and retarding cancer growth and metabolism. *J. Natl. Cancer Inst.* 98: 1634-1646.
- Garreta, E., et al. 2006. Osteogenic differentiation of mouse embryonic stem cells and mouse embryonic fibroblasts in a three-dimensional self-assembling peptide scaffold. *Tissue Eng.* 12: 2215-2227.
- Cai, J., et al. 2007. Directed differentiation of human embryonic stem cells into functional hepatic cells. *Hepatology* 45: 1229-1239.
- Mvula, B., et al. 2008. The effect of low level laser irradiation on adult human adipose derived stem cells. *Lasers Med. Sci.* 23: 277-282.
- Doxakis, E. 2010. Post-transcriptional regulation of α -synuclein expression by mir-7 and mir-153. *J. Biol. Chem.* 285: 12726-12734.
- Zhang, J., et al. 2010. Cardiac stem cells differentiate into sinus node-like cells. *Tohoku J. Exp. Med.* 222: 113-120.