

# CD58 (FL-250): sc-20925

## BACKGROUND

CD2 (also designated E-rosette receptor) interacts through its amino-terminal domain with the extracellular domain of CD58 (also designated CD2 ligand) to mediate cell adhesion. CD2/CD58 binding can enhance antigen-specific T cell activation. CD2 is a transmembrane glycoprotein that is expressed on T lymphocytes, NK cells and thymocytes, as well as on mouse B cells and rat splenic macrophages. CD58 is a heavily glycosylated protein with a broad tissue distribution in hematopoietic and other cells, including endothelium.

## REFERENCES

- Sanders, M.E., Makgoba, M.W., Sharrow, S.O., Stephany, D., Springer, T.A., Young, H.A. and Shaw, S. 1988. Human memory T lymphocytes express increased levels of three cell adhesion molecules (LFA-3, CD2, and LFA-1) and three other molecules (UCHL1, CDw29, and Pgp-1) and have enhanced IFN- $\gamma$  production. *J. Immunol.* 140: 1401-1407.
- Beyers, A.D., Barclay, A.N., Law, D.A., He, Q. and Williams, A.F. 1989. Activation of T lymphocytes via monoclonal antibodies against rat cell surface antigens with particular reference to CD2 antigen. *Immunol. Rev.* 111: 59-77.
- Moingeon, P., Chang, H.C., Sayre, P.H., Clayton, L.K., Alcover, A., Gardner, P. and Reinherz, E.L. 1989. The structural biology of CD2. *Immunol. Rev.* 111: 111-144.
- Bierer, B.E. and Burakoff, S.E. 1989. T lymphocyte activation: the biology and function of CD2 and CD4. *Immunol. Rev.* 111: 267-294.
- Smith, M.E. and Thomas, J.A. 1990. Cellular expression of lymphocyte function associated antigens and the intercellular adhesion molecule-1 in normal tissue. *J. Clin. Pathol.* 43: 893-900.
- Dustin, M.L. and Springer, T.A. 1991. Role of lymphocyte adhesion receptors in transient interactions and cell locomotion. *Annu. Rev. Immunol.* 9: 27-66.
- Davis, S.J. and van der Merwe, P.A. 1996. The structure and ligand interactions of CD2: implications for T cell function. *Immunol. Today* 17: 177-187.
- Kishimoto T., et al., Eds. 1998. *Leukocyte Typing VI: White Cell Differentiation Antigens.* New York, New York: Garland Publishing Inc.

## CHROMOSOMAL LOCATION

Genetic locus: CD58 (human) mapping to 1p13.

## SOURCE

CD58 (FL-250) is a rabbit polyclonal antibody raised against amino acids 1-250 representing full length CD58 of human origin.

## PRODUCT

Each vial contains 200  $\mu$ g IgG in 1.0 ml of PBS with < 0.1% sodium azide and 0.1% gelatin.

## STORAGE

Store at 4° C, **\*\*DO NOT FREEZE\*\***. Stable for one year from the date of shipment. Non-hazardous. No MSDS required.

## APPLICATIONS

CD58 (FL-250) is recommended for detection of CD58 (also designated CD2 ligand or LFH-3) of human origin by Western Blotting (starting dilution 1:200, dilution range 1:100-1:1000), immunoprecipitation [1-2  $\mu$ g per 100-500  $\mu$ g of total protein (1 ml of cell lysate)], immunofluorescence (starting dilution 1:50, dilution range 1:50-1:500) and solid phase ELISA (starting dilution 1:30, dilution range 1:30-1:3000).

Suitable for use as control antibody for CD58 siRNA (h): sc-42799, CD58 shRNA Plasmid (h): sc-42799-SH and CD58 shRNA (h) Lentiviral Particles: sc-42799-V.

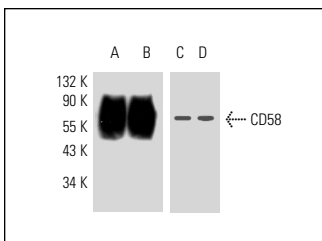
Molecular Weight of CD58: 65-70 kDa.

Positive Controls: Jurkat whole cell lysate: sc-2204, Raji whole cell lysate: sc-364236 or TF-1 cell lysate: sc-2412.

## RECOMMENDED SECONDARY REAGENTS

To ensure optimal results, the following support (secondary) reagents are recommended: 1) Western Blotting: use goat anti-rabbit IgG-HRP: sc-2004 (dilution range: 1:2000-1:100,000) or Cruz Marker™ compatible goat anti-rabbit IgG-HRP: sc-2030 (dilution range: 1:2000-1:5000), Cruz Marker™ Molecular Weight Standards: sc-2035, TBS Blotto A Blocking Reagent: sc-2333 and Western Blotting Luminol Reagent: sc-2048. 2) Immunoprecipitation: use Protein A/G PLUS-Agarose: sc-2003 (0.5 ml agarose/ 2.0 ml). 3) Immunofluorescence: use goat anti-rabbit IgG-FITC: sc-2012 (dilution range: 1:100-1:400) or goat anti-rabbit IgG-TR: sc-2780 (dilution range: 1:100-1:400) with UltraCruz™ Mounting Medium: sc-24941.

## DATA



Western blot analysis of CD58 expression in CCRF-CEM (A), Raji (B), Jurkat (C) and TF-1 (D) whole cell lysates. Antibodies tested include CD58 (TS2/9.1.4.3): sc-20009 (A,B) and CD58 (FL-250): sc-20925 (C,D).

## RESEARCH USE

For research use only, not for use in diagnostic procedures.



Try **CD58 (HCD58): sc-53670**, our highly recommended monoclonal alternatives to CD58 (FL-250).