

# goat anti-rat IgG-R: sc-2093

## BACKGROUND

Santa Cruz Biotechnology's secondary antibodies are available conjugated to either an enzyme, biotin or fluorophore for use in a variety of antibody-based applications including Western Blot, immunostaining, flow cytometry and ELISA. Secondary antibodies are commonly affinity purified against immobilized whole IgG or against antibody fragments. Santa Cruz Biotechnology offers an extensive selection of secondary antibodies optimized for immunohistochemistry and flow cytometry, and are labeled with either biotin, FITC (fluorescein isothiocyanate), Texas Red<sup>®</sup>, TRITC (tetramethyl rhodamine iso-thiocyanate), PE (phycoerythrin), PerCP (peridinin chlorophyll protein complex) and PerCP-Cy5.5 (peridinin chlorophyll protein complex with cyanin-5.5). Immunohistochemistry and flow cytometry secondary antibodies are specific for commonly used primary antibody species, including goat, rabbit, mouse and rat.

## SOURCE

goat anti-rat IgG-R is a pre-adsorbed, affinity purified secondary antibody raised in goat against rat IgG and conjugated to rhodamine.

## PRODUCT

Each vial contains 200 µg rat IgG (pre-adsorbed with mouse and human IgG) in 0.5 ml of PBS containing 0.02% sodium azide.

## APPLICATIONS

goat anti-rat IgG-R is recommended for detection of rat IgG by immunofluorescence staining (starting dilution: 1:100, dilution range: 1:100-1:400) and immunohistochemical staining (starting dilution: 1:100, dilution range: 1:100-1:400).

## RECOMMENDED SUPPORT PRODUCTS

### A. TISSUE CULTURE CELLS

- CrystalCruz<sup>™</sup> Cover Glasses, 22 x 50 mm, precleaned: sc-24975
- CrystalCruz<sup>™</sup> Micro Slides 75 x 25 mm; 72 frosted sides: sc-24976
- PBS (Phosphate Buffered Saline), powder, 1 packet: sc-24947
- Formaldehyde, 37% formaldehyde solution, 25 ml: sc-203049
- Hydrogen Peroxide, 30% solution, 100 ml: sc-203336

### B. FROZEN TISSUE SECTIONS

- Organo/Limonene Mount, non-toxic alternative to Permount, 100 ml: sc-45087
- UltraCruz<sup>™</sup> Mounting Medium, aqueous-based, 10 ml: sc-24941
- ImmunoHistoMount, aqueous-based mounting medium, 30 ml: sc-45086
- Immuno In Situ Mount, for use with in situ hybridization, 30 ml: sc-45088

### C. FORMALIN-FIXED, PARAFFIN-EMBEDDED TISSUE SECTIONS

- Paraffin, for the preparation of tissue samples for staining, 500 g: sc-286633
- Xylenes, mixed isomers with ethylbenzene, 500 ml: sc-237422
- Hematoxylin, Gill's Formulation #2; nuclear counter stain, 100 ml: sc-24973

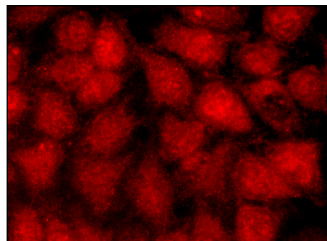
## RESEARCH USE

For research use only, not for use in diagnostic procedures.

## STORAGE

Store at 4° C, **\*\*DO NOT FREEZE\*\***. Stable for one year from the date of shipment. Non-hazardous. No MSDS required.

## DATA



goat anti-rat IgG-R: sc-2093. Immunofluorescence staining of methanol-fixed HeLa cells showing nuclear and cytoplasmic localization. Antibody tested: HSF1 (10H8): sc-13516.

## SELECT PRODUCT CITATIONS

1. Guipponi, M. 2002. The transmembrane serine protease (TMPRSS3) mutated in deafness DFNB8/10 activates the epithelial sodium channel (ENaC) *in vitro*. Hum. Mol. Genet. 11: 2829-2836.
2. Wen-Sheng, W. 2003. ERK signaling pathway is involved in p15INK4b/p16INK4a expression and HepG2 growth inhibition triggered by TPA and Saikosaponin a. Oncogene 22: 955-963.
3. Xu, Y., et al. 2004. Establishment of green fluorescent protein-expressing hepatocellular carcinoma cell lines with different metastatic potential: relevant models for *in vivo* monitoring of metastasis and angiogenesis. J. Cancer Res. Clin. Oncol. 130: 375-382.

## PROTOCOLS

See our web site at [www.scbt.com](http://www.scbt.com) or our catalog for detailed protocols and support products.

Texas Red<sup>®</sup> is a registered trademark of Molecular Probes (6/02).