

52 kDa Ro/SSA (H-140): sc-20960

BACKGROUND

Ro autoantigens are of clinical significance because antibodies directed against them are found in most patients with primary Sjogren syndrome, subacute cutaneous lupus erythematosus (SLE), neonatal lupus erythematosus, ANA-negative lupus erythematosus and systemic lupus erythematosus-like disease secondary to homozygous C2 or C4 complement deficiency. Ro/SSA is a ribonucleoprotein that binds to autoantibodies in 35 to 50% of patients with SLE and in up to 97% of patients with Sjogren syndrome. The Ro/SSA particle consists of a single immunoreactive protein noncovalently bound with one of four small RNA molecules. Most anti-Ro/SSA-positive sera antibodies detect not only the main protein, but also a smaller Ro/SSA protein. The genes which encode the smaller and larger proteins map to human chromosomes 11p15.4 and 1q31, respectively. La/SSB is an autoimmune RNA-binding protein that plays a role in the transcription of RNA polymerase III was originally defined by its reactivity with autoantibodies from patients with Sjogren syndrome and SLE.

CHROMOSOMAL LOCATION

Genetic locus: TRIM21 (human) mapping to 11p15.4.

SOURCE

52 kDa Ro/SSA (H-140) is a rabbit polyclonal antibody raised against amino acids 141-280 of 52 kDa Ro/SSA of human origin.

PRODUCT

Each vial contains 200 µg IgG in 1.0 ml of PBS with < 0.1% sodium azide and 0.1% gelatin.

STORAGE

Store at 4° C, **DO NOT FREEZE**. Stable for one year from the date of shipment. Non-hazardous. No MSDS required.

PROTOCOLS

See our web site at www.scbt.com or our catalog for detailed protocols and support products.

APPLICATIONS

52 kDa Ro/SSA (H-140) is recommended for detection of 52 kDa Ro/SSA of human origin by Western Blotting (starting dilution 1:200, dilution range 1:100-1:1000), immunoprecipitation [1-2 µg per 100-500 µg of total protein (1 ml of cell lysate)], immunofluorescence (starting dilution 1:50, dilution range 1:50-1:500), immunohistochemistry (including paraffin-embedded sections) (starting dilution 1:50, dilution range 1:50-1:500) and solid phase ELISA (starting dilution 1:30, dilution range 1:30-1:3000).

Suitable for use as control antibody for 52 kDa Ro/SSA siRNA (h): sc-40917, 52 kDa Ro/SSA shRNA Plasmid (h): sc-40917-SH and 52 kDa Ro/SSA shRNA (h) Lentiviral Particles: sc-40917-V.

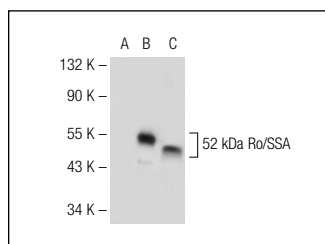
Molecular Weight of 52 kDa Ro/SSA: 52 kDa.

Positive Controls: HL-60 whole cell lysate: sc-2209, HT-1080 whole cell lysate: sc-364183 or 52 kDa Ro/SSA (h): 293T Lysate: sc-158201.

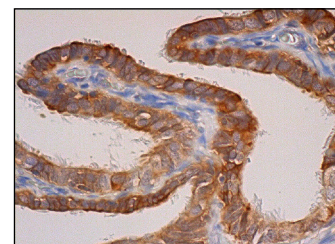
RECOMMENDED SECONDARY REAGENTS

To ensure optimal results, the following support (secondary) reagents are recommended: 1) Western Blotting: use goat anti-rabbit IgG-HRP: sc-2004 (dilution range: 1:2000-1:100,000) or Cruz Marker™ compatible goat anti-rabbit IgG-HRP: sc-2030 (dilution range: 1:2000-1:5000), Cruz Marker™ Molecular Weight Standards: sc-2035, TBS Blotto A Blocking Reagent: sc-2333 and Western Blotting Luminol Reagent: sc-2048. 2) Immunoprecipitation: use Protein A/G PLUS-Agarose: sc-2003 (0.5 ml agarose/2.0 ml). 3) Immunofluorescence: use goat anti-rabbit IgG-FITC: sc-2012 (dilution range: 1:100-1:400) or goat anti-rabbit IgG-TR: sc-2780 (dilution range: 1:100-1:400) with UltraCruz™ Mounting Medium: sc-24941. 4) Immunohistochemistry: use ImmunoCruz™: sc-2051 or ABC: sc-2018 rabbit IgG Staining Systems.

DATA



52 kDa Ro/SSA (H-140): sc-20960. Western blot analysis of 52 kDa Ro/SSA expression in non-transfected 293T: sc-117752 (A), human 52 kDa Ro/SSA transfected 293T: sc-158201 (B) and HT-1080 (C) whole cell lysates.



52 kDa Ro/SSA (H-140): sc-20960. Immunoperoxidase staining of formalin fixed, paraffin-embedded human fallopian tube tissue showing cytoplasmic staining of glandular cells.

SELECT PRODUCT CITATIONS

1. Kijanka, G., et al. 2009. Rapid characterization of binding specificity and cross-reactivity of antibodies using recombinant human protein arrays. *J. Immunol. Methods* 340: 132-137.
2. Burbelo, P.D., et al. 2009. Sensitive and robust luminescent profiling of anti-La and other autoantibodies in Sjogren's syndrome. *Autoimmunity* 42: 515-524.
3. Al-Majdoub, M., et al. 2013. Mass spectrometric and peptide chip characterization of an assembled epitope: analysis of a polyclonal antibody model serum directed against the Sjogren/systemic lupus erythematosus autoantigen TRIM21. *J. Mass Spectrom.* 48: 651-659.

RESEARCH USE

For research use only, not for use in diagnostic procedures.



Try **52 kDa Ro/SSA (D-12): sc-25351** or **52 kDa Ro/SSA (E-11): sc-48430**, our highly recommended monoclonal alternatives to 52 kDa Ro/SSA (H-140). Also, for AC, HRP, FITC, PE, Alexa Fluor® 488 and Alexa Fluor® 647 conjugates, see **52 kDa Ro/SSA (D-12): sc-25351**.