

60 kDa Ro/SSA (H-300): sc-20961

BACKGROUND

Ro autoantigens are of clinical significance because antibodies directed against them are found in most patients with primary Sjogren syndrome, subacute cutaneous lupus erythematosus (SLE), neonatal lupus erythematosus, ANA-negative lupus erythematosus, and systemic lupus erythematosus-like disease secondary to homozygous C2 or C4 complement deficiency. Ro/SSA is a ribonucleoprotein that binds to autoantibodies in 35 to 50% of patients with SLE and in up to 97% of patients with Sjogren syndrome. The Ro/SSA particle consists of a single immunoreactive protein noncovalently bound with one of four small RNA molecules. Most anti-Ro/SSA-positive sera antibodies detect not only the main protein, but also a smaller Ro/SSA protein. The genes which encode the smaller and larger proteins map to human chromosomes 11p15.5 and 1q31.2, respectively. La/SSB is an autoimmune RNA-binding protein that plays a role in the transcription of RNA polymerase III was originally defined by its reactivity with autoantibodies from patients with Sjogren syndrome and SLE.

CHROMOSOMAL LOCATION

Genetic locus: TROVE2 (human) mapping to 1q31.2; Trove2 (mouse) mapping to 1 F.

SOURCE

60 kDa Ro/SSA (H-300) is a rabbit polyclonal antibody raised against amino acids 239-538 of 60 kDa Ro/SSA of human origin.

PRODUCT

Each vial contains 200 µg IgG in 1.0 ml of PBS with < 0.1% sodium azide and 0.1% gelatin.

RESEARCH USE

For research use only, not for use in diagnostic procedures.

APPLICATIONS

60 kDa Ro/SSA (H-300) is recommended for detection of 60 kDa Ro/SSA of mouse, rat and human origin by Western Blotting (starting dilution 1:200, dilution range 1:100-1:1000), immunoprecipitation [1-2 µg per 100-500 µg of total protein (1 ml of cell lysate)], immunofluorescence (starting dilution 1:50, dilution range 1:50-1:500), immunohistochemistry (including paraffin-embedded sections) (starting dilution 1:50, dilution range 1:50-1:500) and solid phase ELISA (starting dilution 1:30, dilution range 1:30-1:3000).

60 kDa Ro/SSA (H-300) is also recommended for detection of 60 kDa Ro/SSA in additional species, including equine, canine, bovine and porcine.

Suitable for use as control antibody for 60 kDa Ro/SSA siRNA (h): sc-40918, 60 kDa Ro/SSA siRNA (m): sc-40919, 60 kDa Ro/SSA shRNA Plasmid (h): sc-40918-SH, 60 kDa Ro/SSA shRNA Plasmid (m): sc-40919-SH, 60 kDa Ro/SSA shRNA (h) Lentiviral Particles: sc-40918-V and 60 kDa Ro/SSA shRNA (m) Lentiviral Particles: sc-40919-V.

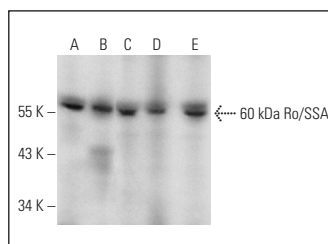
Molecular Weight of 60 kDa Ro/SSA: 60 kDa.

Positive Controls: HeLa whole cell lysate: sc-2200, MCF7 whole cell lysate: sc-2206 or Jurkat whole cell lysate: sc-2204.

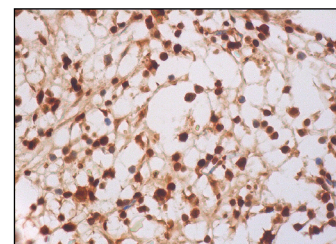
RECOMMENDED SECONDARY REAGENTS

To ensure optimal results, the following support (secondary) reagents are recommended: 1) Western Blotting: use goat anti-rabbit IgG-HRP: sc-2004 (dilution range: 1:2000-1:100,000) or Cruz Marker[™] compatible goat anti-rabbit IgG-HRP: sc-2030 (dilution range: 1:2000-1:5000), Cruz Marker[™] Molecular Weight Standards: sc-2035, TBS Blotto A Blocking Reagent: sc-2333 and Western Blotting Luminol Reagent: sc-2048. 2) Immunoprecipitation: use Protein A/G PLUS-Agarose: sc-2003 (0.5 ml agarose/2.0 ml). 3) Immunofluorescence: use goat anti-rabbit IgG-FITC: sc-2012 (dilution range: 1:100-1:400) or goat anti-rabbit IgG-TR: sc-2780 (dilution range: 1:100-1:400) with UltraCruz[™] Mounting Medium: sc-24941. 4) Immunohistochemistry: use ImmunoCruz[™]: sc-2051 or ABC: sc-2018 rabbit IgG Staining Systems.

DATA



60 kDa Ro/SSA (H-300): sc-20961. Western blot analysis of 60 kDa Ro/SSA expression in HeLa (A), MCF7 (B), Jurkat (C), PC-3 (D) and Hep G2 (E) whole cell lysates.



60 kDa Ro/SSA (H-300): sc-20961. Immunoperoxidase staining of formalin fixed, paraffin-embedded human bone marrow tissue showing cytoplasmic and nuclear staining of hematopoietic cells.

SELECT PRODUCT CITATIONS

- Hogg, J.R., et al. 2007. Human Y5 RNA specializes a Ro ribonucleoprotein for 5S ribosomal RNA quality control. *Genes Dev.* 21: 3067-3072.

STORAGE

Store at 4° C, **DO NOT FREEZE**. Stable for one year from the date of shipment. Non-hazardous. No MSDS required.

PROTOCOLS

See our web site at www.scbt.com or our catalog for detailed protocols and support products.

MONOS
Satisfaction
Guaranteed

Try **60 kDa Ro/SSA (AA-3): sc-100844**, our highly recommended monoclonal alternative to 60 kDa Ro/SSA (H-300).