

CRF (FL-196): sc-21000

BACKGROUND

Individuals suffering from Alzheimer's disease (AD) exhibit dramatic reductions in the content of corticotropin-releasing factor (CRF), increased expression of CRF receptors (CRFRs) and abnormalities in neuronal morphology in affected brain areas. In addition, AD patients show decreased concentrations of CRF in their cerebrospinal fluid, which may contribute to their cognitive impairment. A high affinity CRF binding protein, designated CRF-BP, has been discovered in post-mortem brain samples from AD patients. CRF-BP serves to bind and inactivate CRF, reducing the pool of "free CRF" available to bind CRFRs. Two CRFRs, designated CRF-RI and CRF-RII, have been described and exhibit distinct brain localizations. There are two forms of CRF-RII, referred to as CRF-RII α and CRF-RII β , that result from alternative mRNA splicings. An additional member of the CRF family, urocortin, shares 63% sequence identity with CRF. Urocortin specifically binds to and activates CRF-RI and CRF-RII, but binds to CRF-RII more efficiently than CRF, suggesting that it may be the true, high affinity ligand for the CRF receptor type II.

CHROMOSOMAL LOCATION

Genetic locus: CRH (human) mapping to 8q13.1; Crh (mouse) mapping to 3 A2.

SOURCE

CRF (FL-196) is a rabbit polyclonal antibody raised against amino acids 1-196 representing full length CRF of human origin.

PRODUCT

Each vial contains 200 μ g IgG in 1.0 ml of PBS with < 0.1% sodium azide and 0.1% gelatin.

STORAGE

Store at 4° C, ****DO NOT FREEZE****. Stable for one year from the date of shipment. Non-hazardous. No MSDS required.

APPLICATIONS

CRF (FL-196) is recommended for detection of CRF of mouse, rat and human origin by Western Blotting (starting dilution 1:200, dilution range 1:100-1:1000), immunoprecipitation [1-2 μ g per 100-500 μ g of total protein (1 ml of cell lysate)], immunofluorescence (starting dilution 1:50, dilution range 1:50-1:500), immunohistochemistry (including paraffin-embedded sections) (starting dilution 1:50, dilution range 1:50-1:500) and solid phase ELISA (starting dilution 1:30, dilution range 1:30-1:3000).

CRF (FL-196) is also recommended for detection of CRF in additional species, including canine.

Suitable for use as control antibody for CRF siRNA (h): sc-39395, CRF siRNA (m): sc-39396, CRF shRNA Plasmid (h): sc-39395-SH, CRF shRNA Plasmid (m): sc-39396-SH, CRF shRNA (h) Lentiviral Particles: sc-39395-V and CRF shRNA (m) Lentiviral Particles: sc-39396-V.

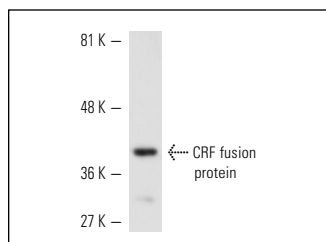
Molecular Weight of CRF: 25 kDa.

Positive Controls: PC-12 + NGF cell lysate: sc-3808, mouse brain extract: sc-2253 or PC-12 cell lysate: sc-2250.

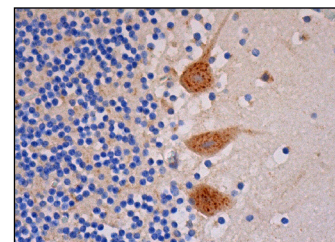
RECOMMENDED SECONDARY REAGENTS

To ensure optimal results, the following support (secondary) reagents are recommended: 1) Western Blotting: use goat anti-rabbit IgG-HRP: sc-2004 (dilution range: 1:2000-1:100,000) or Cruz Marker™ compatible goat anti-rabbit IgG-HRP: sc-2030 (dilution range: 1:2000-1:5000), Cruz Marker™ Molecular Weight Standards: sc-2035, TBS Blotto A Blocking Reagent: sc-2333 and Western Blotting Luminol Reagent: sc-2048. 2) Immunoprecipitation: use Protein A/G PLUS-Agarose: sc-2003 (0.5 ml agarose/2.0 ml). 3) Immunofluorescence: use goat anti-rabbit IgG-FITC: sc-2012 (dilution range: 1:100-1:400) or goat anti-rabbit IgG-TR: sc-2780 (dilution range: 1:100-1:400) with UltraCruz™ Mounting Medium: sc-24941. 4) Immunohistochemistry: use ImmunoCruz™: sc-2051 or ABC: sc-2018 rabbit IgG Staining Systems.

DATA



CRF (FL-196): sc-21000. Western blot analysis of human recombinant CRF fusion protein.



CRF (FL-196): sc-21000. Immunoperoxidase staining of formalin fixed, paraffin-embedded human cerebellum tissue showing cytoplasmic staining of Purkinje cells and cells in granular and molecular layers.

RESEARCH USE

For research use only, not for use in diagnostic procedures.

PROTOCOLS

See our web site at www.scbt.com or our catalog for detailed protocols and support products.

MONOS
Satisfaction
Guaranteed

Try **CRF (2B11): sc-293187**, our highly recommended monoclonal alternative to CRF (FL-196).