

CSDA (F-19): sc-21318

BACKGROUND

CSDA (cold shock domain protein A), also known as DBPA, CSDA1 or ZONAB (zonula occludens 1-associated nucleic acid-binding protein), is a 372 amino acid nuclear and cytoplasmic protein that is highly expressed in skeletal muscle and heart. Containing one CSD (cold-shock) domain, CSDA is thought to bind to GM-CSF promoter, full length mRNA and to short RNA sequences containing a specific consensus site. CSDA is suggested to have a role in translation repression and is found in a mRNP complex with MSY2. MSY2 belongs to the Y-box family of multifunctional proteins that regulate both transcription and translation. CSDA participates in promoting cell proliferation and expression of cyclin D1 and proliferating cell nuclear antigen (PCNA). CSDA is regarded to be an important component of the mechanisms that sense epithelial density and in regulating the switch between proliferation and differentiation through complex transcriptional networks.

CHROMOSOMAL LOCATION

Genetic locus: CSDA (human) mapping to 12p13.2; CSDA (mouse) mapping to 6 F3.

SOURCE

CSDA (F-19) is an affinity purified goat polyclonal antibody raised against a peptide mapping within an internal region of CSDA of mouse origin.

PRODUCT

Each vial contains 200 µg IgG in 1.0 ml of PBS with < 0.1% sodium azide and 0.1% gelatin. Also available as TransCruz reagent for Gel Supershift and ChIP applications, sc-21318 X, 200 µg/0.1 ml.

Blocking peptide available for competition studies, sc-21318 P, (100 µg peptide in 0.5 ml PBS containing < 0.1% sodium azide and 0.2% BSA).

APPLICATIONS

CSDA (F-19) is recommended for detection of CSDA of mouse, rat and human origin by Western Blotting (starting dilution 1:200, dilution range 1:100-1:1000), immunoprecipitation [1-2 µg per 100-500 µg of total protein (1 ml of cell lysate)], immunofluorescence (starting dilution 1:50, dilution range 1:50-1:500), immunohistochemistry (including paraffin-embedded sections) (starting dilution 1:50, dilution range 1:50-1:500) and solid phase ELISA (starting dilution 1:30, dilution range 1:30-1:3000). CSDA (F-19) is also recommended for detection of CSDA in additional species, including porcine.

Suitable for use as control antibody for CSDA siRNA (h): sc-38632, CSDA siRNA (m): sc-38633, CSDA shRNA Plasmid (h): sc-38632-SH, CSDA shRNA Plasmid (m): sc-38633-SH, CSDA shRNA (h) Lentiviral Particles: sc-38632-V and CSDA shRNA (m) Lentiviral Particles: sc-38633-V.

CSDA (F-19) X TransCruz antibody is recommended for Gel Supershift and ChIP applications.

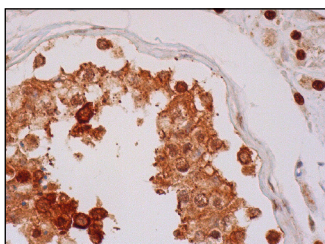
Molecular Weight of CSDA: 40 kDa.

Positive Controls: Jurkat whole cell lysate: sc-2204.

RECOMMENDED SECONDARY REAGENTS

To ensure optimal results, the following support (secondary) reagents are recommended: 1) Western Blotting: use donkey anti-goat IgG-HRP: sc-2020 (dilution range: 1:2000-1:100,000) or Cruz Marker™ compatible donkey anti-goat IgG-HRP: sc-2033 (dilution range: 1:2000-1:5000), Cruz Marker™ Molecular Weight Standards: sc-2035, TBS Blotto A Blocking Reagent: sc-2333 and Western Blotting Luminol Reagent: sc-2048. 2) Immunoprecipitation: use Protein A/G PLUS-Agarose: sc-2003 (0.5 ml agarose/2.0 ml). 3) Immunofluorescence: use donkey anti-goat IgG-FITC: sc-2024 (dilution range: 1:100-1:400) or donkey anti-goat IgG-TR: sc-2783 (dilution range: 1:100-1:400) with UltraCruz™ Mounting Medium: sc-24941. 4) Immunohistochemistry: use ImmunoCruz™: sc-2053 or ABC: sc-2023 goat IgG Staining Systems.

DATA



CSDA (F-19): sc-21318. Immunoperoxidase staining of formalin fixed, paraffin-embedded human testis tissue showing nuclear and cytoplasmic staining of cells in seminiferous ducts and Leydig cells.

SELECT PRODUCT CITATIONS

- Perez-Leal, O., et al. 2012. Polyamine-regulated translation of spermidine/spermine-N1-acetyltransferase. *Mol. Cell. Biol.* 32: 1453-1467.
- Jiménez-Salazar, J.E., et al. 2014. Membrane-initiated estradiol signaling of epithelial-mesenchymal transition-associated mechanisms through regulation of tight junctions in human breast cancer cells. *Horm. Cancer* 5: 161-173.

STORAGE

Store at 4° C, **DO NOT FREEZE**. Stable for one year from the date of shipment. Non-hazardous. No MSDS required.

RESEARCH USE

For research use only, not for use in diagnostic procedures.

MONOS
Satisfaction
Guaranteed

Try **CSDA (A-2L): sc-130419**, our highly recommended monoclonal alternative to CSDA (F-19).