

## 52 kDa Ro/SSA (H-20): sc-21365

### BACKGROUND

Ro autoantigens are of clinical significance because antibodies directed against them are found in most patients with primary Sjogren syndrome, sub-acute cutaneous lupus erythematosus (SLE), neonatal lupus erythematosus, ANA-negative lupus erythematosus and systemic lupus erythematosus-like disease secondary to homozygous C2 or C4 complement deficiency. Ro/SSA is a ribonucleoprotein that binds to autoantibodies in 35 to 50% of patients with SLE and in up to 97% of patients with Sjogren syndrome. The Ro/SSA particle consists of a single immunoreactive protein noncovalently bound with one of four small RNA molecules. Most anti-Ro/SSA-positive sera have antibodies not only against the immunoreactive protein, but also against an Ro/SSA protein. La/SSB is an autoimmune RNA-binding protein that plays a role in the transcription of RNA polymerase III was originally defined by its reactivity with autoantibodies from patients with Sjogren syndrome and SLE.

### REFERENCES

1. Chambers, J.C., Kenan, D., Martin, B.J. and Keene, J.D. 1988. Genomic structure and amino acid sequence domains of the human La autoantigen. *J. Biol. Chem.* 263: 18043-18051.
2. Itoh, K., Itoh, Y. and Frank, M.B. 1991. Protein heterogeneity in the human Ro/SSA ribonucleoproteins. The 52- and 60 kDa Ro/SSA autoantigens are encoded by separate genes. *J. Clin. Invest.* 87: 177-186.
3. Frank, M.B., Itoh, K., Fujisaku, A., Pontarotti, P., Mattei, M.G. and Neas, B.R. 1993. The mapping of the human 52 kDa Ro/SSA autoantigen gene to human chromosome 11, and its polymorphisms. *Am. J. Hum. Genet.* 52: 183-191.
4. Chan, E.K., Tan, E.M., Ward, D.C. and Matera, A.G. 1994. Human 60 kDa SSA/Ro ribonucleoprotein autoantigen gene (SSA2) localized to 1q31 by fluorescence *in situ* hybridization. *Genomics* 23: 298-300.
5. LocusLink Report (LocusID: 600063). <http://www.ncbi.nlm.nih.gov/LocusLink>

### SOURCE

52 kDa Ro/SSA (H-20) is an affinity purified goat polyclonal antibody raised against a peptide mapping near the N-terminus of 52 kDa Ro/SSA of mouse origin.

### PRODUCT

Each vial contains 200 µg IgG in 1.0 ml of PBS with < 0.1% sodium azide and 0.1% gelatin.

Blocking peptide available for competition studies, sc-21365 P, (100 µg peptide in 0.5 ml PBS containing < 0.1% sodium azide and 0.2% BSA).

### STORAGE

Store at 4° C, **\*\*DO NOT FREEZE\*\***. Stable for one year from the date of shipment. Non-hazardous. No MSDS required.

### PROTOCOLS

See our web site at [www.scbt.com](http://www.scbt.com) or our catalog for detailed protocols and support products.

### APPLICATIONS

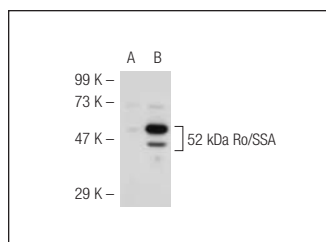
52 kDa Ro/SSA (H-20) is recommended for detection of 52 kDa Ro/SSA of mouse and rat origin by Western Blotting (starting dilution 1:200, dilution range 1:100-1:1000), immunoprecipitation [1-2 µg per 100-500 µg of total protein (1 ml of cell lysate)], immunofluorescence (starting dilution 1:50, dilution range 1:50-1:500) and solid phase ELISA (starting dilution 1:30, dilution range 1:30-1:3000).

Suitable for use as control antibody for 52 kDa Ro/SSA siRNA (m): sc-140349, 52 kDa Ro/SSA shRNA Plasmid (m): sc-140349-SH and 52 kDa Ro/SSA shRNA (m) Lentiviral Particles: sc-140349-V.

### RECOMMENDED SECONDARY REAGENTS

To ensure optimal results, the following support (secondary) reagents are recommended: 1) Western Blotting: use donkey anti-goat IgG-HRP: sc-2020 (dilution range: 1:2000-1:100,000) or Cruz Marker™ compatible donkey anti-goat IgG-HRP: sc-2033 (dilution range: 1:2000-1:5000), Cruz Marker™ Molecular Weight Standards: sc-2035, TBS Blotto A Blocking Reagent: sc-2333 and Western Blotting Luminol Reagent: sc-2048. 2) Immunoprecipitation: use Protein A/G PLUS-Agarose: sc-2003 (0.5 ml agarose/2.0 ml). 3) Immunofluorescence: use donkey anti-goat IgG-FITC: sc-2024 (dilution range: 1:100-1:400) or donkey anti-goat IgG-TR: sc-2783 (dilution range: 1:100-1:400) with UltraCruz™ Mounting Medium: sc-24941.

### DATA



52 kDa Ro/SSA (H-20): sc-21365. Western blot analysis of 52 kDa Ro/SSA expression in non-transfected: sc-117752 (A) and mouse 52 kDa Ro/SSA transfected: sc-126343 (B) 293T whole cell lysates.

### RESEARCH USE

For research use only, not for use in diagnostic procedures.