

# 60 kDa Ro/SSA (N-20): sc-21368

## BACKGROUND

Ro autoantigens are of clinical significance because antibodies directed against them are found in most patients with primary Sjogren syndrome, subacute cutaneous lupus erythematosus (SLE), neonatal lupus erythematosus, ANA-negative lupus erythematosus and systemic lupus erythematosus-like disease secondary to homozygous C2 or C4 complement deficiency. Ro/SSA is a ribonucleoprotein that binds to autoantibodies in 35 to 50% of patients with SLE and in up to 97% of patients with Sjogren syndrome. The Ro/SSA particle consists of a single immunoreactive protein noncovalently bound with one of four small RNA molecules. Most anti-Ro/SSA-positive sera have antibodies not only against the immunoreactive protein, but also against an Ro/SSA protein. La/SSB is an autoimmune RNA-binding protein that plays a role in the transcription of RNA polymerase III was originally defined by its reactivity with autoantibodies from patients with Sjogren syndrome and SLE.

## CHROMOSOMAL LOCATION

Genetic locus: TROVE2 (human) mapping to 1q31.2; Trove2 (mouse) mapping to 1 F.

## SOURCE

60 kDa Ro/SSA (N-20) is an affinity purified goat polyclonal antibody raised against a peptide mapping at the N-terminus of 60 kDa Ro/SSA of human origin.

## PRODUCT

Each vial contains 200 µg IgG in 1.0 ml of PBS with < 0.1% sodium azide and 0.1% gelatin.

Blocking peptide available for competition studies, sc-21368 P, (100 µg peptide in 0.5 ml PBS containing < 0.1% sodium azide and 0.2% BSA).

## APPLICATIONS

60 kDa Ro/SSA (N-20) is recommended for detection of 60 kDa Ro/SSA of mouse, rat and human origin by Western Blotting (starting dilution 1:200, dilution range 1:100-1:1000), immunoprecipitation [1-2 µg per 100-500 µg of total protein (1 ml of cell lysate)], immunofluorescence (starting dilution 1:50, dilution range 1:50-1:500), immunohistochemistry (including paraffin-embedded sections) (starting dilution 1:50, dilution range 1:50-1:500) and solid phase ELISA (starting dilution 1:30, dilution range 1:30-1:3000).

60 kDa Ro/SSA (N-20) is also recommended for detection of 60 kDa Ro/SSA in additional species, including equine, canine and bovine.

Suitable for use as control antibody for 60 kDa Ro/SSA siRNA (h): sc-40918, 60 kDa Ro/SSA siRNA (m): sc-40919, 60 kDa Ro/SSA shRNA Plasmid (h): sc-40918-SH, 60 kDa Ro/SSA shRNA Plasmid (m): sc-40919-SH, 60 kDa Ro/SSA shRNA (h) Lentiviral Particles: sc-40918-V and 60 kDa Ro/SSA shRNA (m) Lentiviral Particles: sc-40919-V.

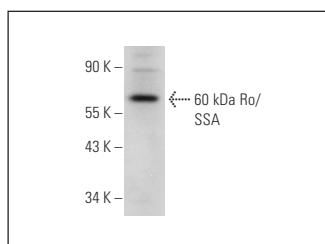
Molecular Weight of 60 kDa Ro/SSA: 60 kDa.

Positive Controls: HeLa whole cell lysate: sc-2200, MCF7 whole cell lysate: sc-2206 or U-251-MG whole cell lysate: sc-364176.

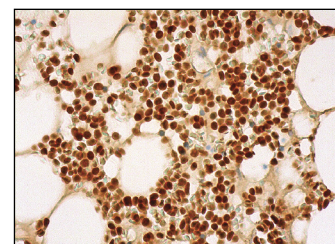
## RECOMMENDED SECONDARY REAGENTS

To ensure optimal results, the following support (secondary) reagents are recommended: 1) Western Blotting: use donkey anti-goat IgG-HRP: sc-2020 (dilution range: 1:2000-1:100,000) or Cruz Marker™ compatible donkey anti-goat IgG-HRP: sc-2033 (dilution range: 1:2000-1:5000), Cruz Marker™ Molecular Weight Standards: sc-2035, TBS Blotto A Blocking Reagent: sc-2333 and Western Blotting Luminol Reagent: sc-2048. 2) Immunoprecipitation: use Protein A/G PLUS-Agarose: sc-2003 (0.5 ml agarose/2.0 ml). 3) Immunofluorescence: use donkey anti-goat IgG-FITC: sc-2024 (dilution range: 1:100-1:400) or donkey anti-goat IgG-TR: sc-2783 (dilution range: 1:100-1:400) with UltraCruz™ Mounting Medium: sc-24941. 4) Immunohistochemistry: use ImmunoCruz™: sc-2053 or ABC: sc-2023 goat IgG Staining Systems.

## DATA



60 kDa Ro/SSA (N-20): sc-21368. Western blot analysis of 60 kDa Ro/SSA expression in U-251-MG whole cell lysate.



60 kDa Ro/SSA (N-20): sc-21368. Immunoperoxidase staining of formalin fixed, paraffin-embedded human bone marrow tissue showing cytoplasmic and nuclear staining of hematopoietic cells.

## STORAGE

Store at 4° C. **\*\*DO NOT FREEZE\*\***. Stable for one year from the date of shipment. Non-hazardous. No MSDS required.

## RESEARCH USE

For research use only, not for use in diagnostic procedures.

## PROTOCOLS

See our web site at [www.scbt.com](http://www.scbt.com) or our catalog for detailed protocols and support products.

**MONOS**  
Satisfaction  
Guaranteed

Try **60 kDa Ro/SSA (AA-3): sc-100844**, our highly recommended monoclonal alternative to 60 kDa Ro/SSA (N-20).