

La/SSB (D-20): sc-21393

BACKGROUND

Ro autoantigens are of clinical significance because antibodies directed against them are found in most patients with primary Sjogren syndrome, subacute cutaneous lupus erythematosus (SLE), neonatal lupus erythematosus, ANA-negative lupus erythematosus and systemic lupus erythematosus-like disease secondary to homozygous C2 or C4 complement deficiency. Ro/SSA is a ribonucleoprotein that binds to autoantibodies in 35 to 50% of patients with SLE and in up to 97% of patients with Sjogren syndrome. The Ro/SSA particle consists of a single immunoreactive protein noncovalently bound with one of four small RNA molecules. Most anti-Ro/SSA-positive sera have antibodies not only against the immunoreactive protein, but also against an Ro/SSA protein. La/SSB is an autoimmune RNA-binding protein that plays a role in the transcription of RNA polymerase III was originally defined by its reactivity with autoantibodies from patients with Sjogren syndrome and SLE.

CHROMOSOMAL LOCATION

Genetic locus: SSB (human) mapping to 2q31.1; Ssb (mouse) mapping to 2 C2.

SOURCE

La/SSB (D-20) is an affinity purified goat polyclonal antibody raised against a peptide mapping within an internal region of La/SSB of human origin.

PRODUCT

Each vial contains 200 µg IgG in 1.0 ml of PBS with < 0.1% sodium azide and 0.1% gelatin.

Blocking peptide available for competition studies, sc-21393 P, (100 µg peptide in 0.5 ml PBS containing < 0.1% sodium azide and 0.2% BSA).

APPLICATIONS

La/SSB (D-20) is recommended for detection of La/SSB of mouse, rat and human origin by Western Blotting (starting dilution 1:200, dilution range 1:100-1:1000), immunofluorescence (starting dilution 1:50, dilution range 1:50-1:500), immunohistochemistry (including paraffin-embedded sections) (starting dilution 1:50, dilution range 1:50-1:500) and solid phase ELISA (starting dilution 1:30, dilution range 1:30-1:3000).

La/SSB (D-20) is also recommended for detection of La/SSB in additional species, including equine, canine, bovine, porcine and avian.

Suitable for use as control antibody for La/SSB siRNA (h): sc-40915, La/SSB siRNA (m): sc-40916, La/SSB siRNA (r): sc-270064, La/SSB shRNA Plasmid (h): sc-40915-SH, La/SSB shRNA Plasmid (m): sc-40916-SH, La/SSB shRNA Plasmid (r): sc-270064-SH, La/SSB shRNA (h) Lentiviral Particles: sc-40915-V, La/SSB shRNA (m) Lentiviral Particles: sc-40916-V and La/SSB shRNA (r) Lentiviral Particles: sc-270064-V.

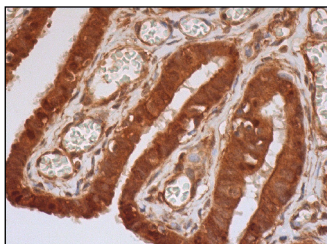
Molecular Weight of La/SSB: 48 kDa.

Positive Controls: Ramos cell lysate: sc-2216, NAMALWA cell lysate: sc-2234 or HCT-8 cell lysate: sc-24675.

RECOMMENDED SECONDARY REAGENTS

To ensure optimal results, the following support (secondary) reagents are recommended: 1) Western Blotting: use donkey anti-goat IgG-HRP: sc-2020 (dilution range: 1:2000-1:100,000) or Cruz Marker™ compatible donkey anti-goat IgG-HRP: sc-2033 (dilution range: 1:2000-1:5000), Cruz Marker™ Molecular Weight Standards: sc-2035, TBS Blotto A Blocking Reagent: sc-2333 and Western Blotting Luminol Reagent: sc-2048. 2) Immunofluorescence: use donkey anti-goat IgG-FITC: sc-2024 (dilution range: 1:100-1:400) or donkey anti-goat IgG-TR: sc-2783 (dilution range: 1:100-1:400) with UltraCruz™ Mounting Medium: sc-24941. 3) Immunohistochemistry: use ImmunoCruz™: sc-2053 or ABC: sc-2023 goat IgG Staining Systems.

DATA



La/SSB (D-20): sc-21393. Immunoperoxidase staining of formalin fixed, paraffin-embedded human fallopian tube tissue showing nuclear and cytoplasmic staining of glandular cells.

STORAGE

Store at 4° C, ****DO NOT FREEZE****. Stable for one year from the date of shipment. Non-hazardous. No MSDS required.

RESEARCH USE

For research use only, not for use in diagnostic procedures.

PROTOCOLS

See our web site at www.scbt.com or our catalog for detailed protocols and support products.

MONOS
Satisfaction
Guaranteed

Try **La/SSB (312B): sc-80656** or **La/SSB (B-8): sc-166274**, our highly recommended monoclonal alternatives to La/SSB (D-20).