

Gemin3 (N-20): sc-21430

BACKGROUND

Spinal muscular atrophy (SMA) is an autosomal recessive neurodegenerative disease characterized by loss of motor neurons in the spinal cord. SMA is caused by deletion or loss-of-function mutations in the SMN (survival of motor neuron) gene. Gemin3, also known as DP103, DDX20, DEAD-box protein DP130 and DEAD/H box 20, is a protein product of human chromosome 1p13.2. It associates directly with SMN and is a part of the SMN complex containing Gemin2, Gemin4, Gemin5 and Gemin6, as well as several spliceosomal snRNP proteins. The SMN complex plays an essential role in spliceosomal snRNP assembly in the cytoplasm and is required for pre-mRNA splicing of the nucleus. It is found in both the cytoplasm and the nucleus. The nuclear form is concentrated in subnuclear bodies called gems (for Gemini of the coiled bodies). Gemin3 also interacts with SmB, SmD2 and SmD3. It contains the conserved motif Asp-Glu-Ala-Asp (DEAD) characteristic of DEAD-box proteins. Gemin3 is a putative RNA helicase and shows ATPase activity. It is expressed in B and T cell neuroblastoma-derived cell lines, malignant melanoma tumor, normal testis and is expressed in low levels in colon, skeletal muscle, liver, kidney and lung.

REFERENCES

1. Fischer, U., et al. 1997. The SMN-SIP1 complex has an essential role in spliceosomal snRNP biogenesis. *Cell* 90: 1023-1029.
2. Coovert, D., et al. 1997. The survival motor neuron protein in spinal muscular atrophy. *Hum. Mol. Genet.* 6: 1205-1214.
3. Monani, U., et al. 1999. A single nucleotide difference that alters splicing patterns distinguishes the SMA gene SMN1 from the copy gene SMN2. *Hum. Mol. Genet.* 8: 1177-1183.
4. Grundhoff, A., et al. 1999. Characterization of DP103, a novel DEAD box protein that binds to the Epstein-Barr virus nuclear proteins EBNA2 and EBNA3C. *J. Biol. Chem.* 274: 19136-19144.
5. Charroux, B., et al. 1999. Gemin3: A novel DEAD box protein that interacts with SMN, the spinal muscular atrophy gene product, and is a component of gems. *J. Cell. Bio.* 13: 1181-1194.

CHROMOSOMAL LOCATION

Genetic locus: DDX20 (human) mapping to 1p13.2.

SOURCE

Gemin3 (N-20) is an affinity purified goat polyclonal antibody raised against a peptide mapping near the N-terminus of Gemin3 of human origin.

PRODUCT

Each vial contains 200 µg IgG in 1.0 ml of PBS with < 0.1% sodium azide and 0.1% gelatin.

Blocking peptide available for competition studies, sc-21430 P, (100 µg peptide in 0.5 ml PBS containing < 0.1% sodium azide and 0.2% BSA).

RESEARCH USE

For research use only, not for use in diagnostic procedures.

APPLICATIONS

Gemin3 (N-20) is recommended for detection of Gemin3 of human origin by Western Blotting (starting dilution 1:200, dilution range 1:100-1:1000), immunoprecipitation [1-2 µg per 100-500 µg of total protein (1 ml of cell lysate)], immunofluorescence (starting dilution 1:50, dilution range 1:50-1:500) and solid phase ELISA (starting dilution 1:30, dilution range 1:30-1:3000).

Suitable for use as control antibody for Gemin3 siRNA (h): sc-43798, Gemin3 shRNA Plasmid (h): sc-43798-SH and Gemin3 shRNA (h) Lentiviral Particles: sc-43798-V.

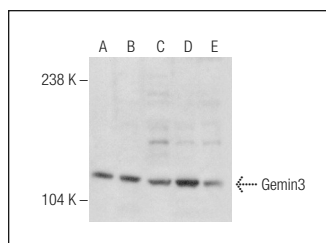
Molecular Weight of Gemin3: 103 kDa.

Positive Controls: HeLa whole cell lysate: sc-2200, Jurkat whole cell lysate: sc-2204 or CCRF-CEM nuclear extract: sc-2146.

RECOMMENDED SECONDARY REAGENTS

To ensure optimal results, the following support (secondary) reagents are recommended: 1) Western Blotting: use donkey anti-goat IgG-HRP: sc-2020 (dilution range: 1:2000-1:100,000) or Cruz Marker™ compatible donkey anti-goat IgG-HRP: sc-2033 (dilution range: 1:2000-1:5000), Cruz Marker™ Molecular Weight Standards: sc-2035, TBS Blotto A Blocking Reagent: sc-2333 and Western Blotting Luminol Reagent: sc-2048. 2) Immunoprecipitation: use Protein A/G PLUS-Agarose: sc-2003 (0.5 ml agarose/2.0 ml). 3) Immunofluorescence: use donkey anti-goat IgG-FITC: sc-2024 (dilution range: 1:100-1:400) or donkey anti-goat IgG-TR: sc-2783 (dilution range: 1:100-1:400) with UltraCruz™ Mounting Medium: sc-24941.

DATA



Gemin3 (N-20): sc-21430. Western blot analysis of Gemin3 expression in HeLa (A), Jurkat (B), CCRF-CEM (C), K-562 (D) and Ramos (E) nuclear extracts.

STORAGE

Store at 4° C, **DO NOT FREEZE**. Stable for one year from the date of shipment. Non-hazardous. No MSDS required.

MONOS
Satisfaction
Guaranteed

Try **Gemin3 (12H12): sc-57007** or **Gemin3 (C-5): sc-374373**, our highly recommended monoclonal alternatives to Gemin3 (N-20).