

ADAM15 (E-14): sc-21684

BACKGROUND

ADAM (a disintegrin and metalloprotease) proteins are a family of over 30 membrane-anchored, glycosylated, Zn²⁺-dependent proteases that are involved in cell-cell, cell-matrix interface-related processes including fertilization, muscle fusion, secretion of TNF α (tumor necrosis factor α) and modulation of the neurogenic function of Notch and Delta. ADAM proteins possess a signal-domain, a pro-domain, a metalloprotease domain, a disintegrin domain (integrin ligand), a cysteine-rich region, an epidermal growth factor-like domain, a transmembrane domain and a cytoplasmic tail. ADAMs are expressed in brain, testis, epididymis, ovary, breast, placenta, liver, heart, lung, bone and muscle, and catalyze proteolysis, adhesion, fusion and intracellular signaling. ADAM 15 (metargidin) is an 814 amino acid plasma membrane protein that contains an RGD tripeptide sequence through which it binds to integrins α V β 3 and α 5 β 1.

CHROMOSOMAL LOCATION

Genetic locus: ADAM15 (human) mapping to 1q22; Adam15 (mouse) mapping to 3 F1.

SOURCE

ADAM15 (E-14) is an affinity purified goat polyclonal antibody raised against a peptide mapping within an internal region of ADAM15 of human origin.

PRODUCT

Each vial contains 200 μ g IgG in 1.0 ml of PBS with < 0.1% sodium azide and 0.1% gelatin.

Blocking peptide available for competition studies, sc-21684 P, (100 μ g peptide in 0.5 ml PBS containing < 0.1% sodium azide and 0.2% BSA).

RESEARCH USE

For research use only, not for use in diagnostic procedures.

APPLICATIONS

ADAM15 (E-14) is recommended for detection of ADAM15 of mouse, rat and human origin by Western Blotting (starting dilution 1:200, dilution range 1:100-1:1000), immunofluorescence (starting dilution 1:50, dilution range 1:50-1:500), immunohistochemistry (including paraffin-embedded sections) (starting dilution 1:50, dilution range 1:50-1:500) and solid phase ELISA (starting dilution 1:30, dilution range 1:30-1:3000).

ADAM15 (E-14) is also recommended for detection of ADAM15 in additional species, including equine, canine, bovine and porcine.

Suitable for use as control antibody for ADAM15 siRNA (h): sc-37057, ADAM15 siRNA (m): sc-41416, ADAM15 shRNA Plasmid (h): sc-37057-SH, ADAM15 shRNA Plasmid (m): sc-41416-SH, ADAM15 shRNA (h) Lentiviral Particles: sc-37057-V and ADAM15 shRNA (m) Lentiviral Particles: sc-41416-V.

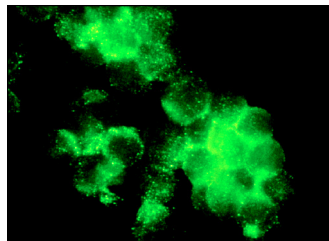
Molecular Weight of ADAM15: 110 kDa.

Positive Controls: Jurkat whole cell lysate: sc-2204 or HCT-116 whole cell lysate: sc-364175.

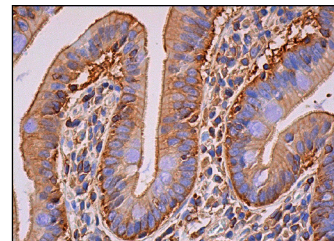
RECOMMENDED SECONDARY REAGENTS

To ensure optimal results, the following support (secondary) reagents are recommended: 1) Western Blotting: use donkey anti-goat IgG-HRP: sc-2020 (dilution range: 1:2000-1:100,000) or Cruz Marker[™] compatible donkey anti-goat IgG-HRP: sc-2033 (dilution range: 1:2000-1:5000), Cruz Marker[™] Molecular Weight Standards: sc-2035, TBS Blotto A Blocking Reagent: sc-2333 and Western Blotting Luminol Reagent: sc-2048. 2) Immunofluorescence: use donkey anti-goat IgG-FITC: sc-2024 (dilution range: 1:100-1:400) or donkey anti-goat IgG-TR: sc-2783 (dilution range: 1:100-1:400) with UltraCruz[™] Mounting Medium: sc-24941. 3) Immunohistochemistry: use ImmunoCruz[™]: sc-2053 or ABC: sc-2023 goat IgG Staining Systems.

DATA



ADAM15 (E-14): sc-21684. Immunofluorescence staining of methanol-fixed Jurkat cells showing membrane localization.



ADAM15 (E-14): sc-21684. Immunoperoxidase staining of formalin fixed, paraffin-embedded human small intestine tissue showing membrane and cytoplasmic staining of glandular cells.

STORAGE

Store at 4° C, ****DO NOT FREEZE****. Stable for one year from the date of shipment. Non-hazardous. No MSDS required.

PROTOCOLS

See our web site at www.scbt.com or our catalog for detailed protocols and support products.

MONOS
Satisfaction
Guaranteed

Try **ADAM15 (D-5): sc-365752** or **ADAM15 (A-10): sc-514483**, our highly recommended monoclonal alternatives to ADAM15 (E-14).