

CD100 (148-2D12): sc-21780

BACKGROUND

Semaphorins comprise a family of phylogenetically conserved proteins containing a 500 amino acid region termed the "Sema domain" in the amino terminus. The semaphorin family is subdivided into eight groups. CD100 (SEMA4D) is a 150 kDa transmembrane protein belonging to group IV of the semaphorin family. CD100 is expressed in both embryonic and adult kidney, heart, lung and neural tissues. A receptor expressed abundantly in fetal brain and kidney, plexin-B1, binds CD100 with high affinity. CD100 is the only member of the semaphorin family that is expressed in the immune system. CD100 activates T cell proliferation and promotes B cell aggregation. CD100 regulates B cell response by negating an inhibitory signal from CD72 that normally diminishes B cell response. This signal is turned off when CD100 binds to CD72 and induces tyrosine dephosphorylation of CD72, followed by the dissociation of SHP-1 from CD72. The gene encoding human CD100 maps to chromosome 9q22.2.

REFERENCES

1. Bougeret, C., Mansur, I.G., Dastot, H., Schmid, M., Mahouy, G., Bensussan, A. and Bousmell, L. 1992. Increased surface expression of a newly identified 150 kDa dimer early after human T lymphocyte activation. *J. Immunol.* 148: 318-323.
2. Herold, C., Bismuth, G., Bensussan, A. and Bousmell, L. 1995. Activation signals are delivered through two distinct epitopes of CD100, a unique 150 kDa human lymphocyte surface structure previously defined by BB18 mAb. *Int. Immunol.* 7: 1-8.
3. Furuyama, T., Inagaki, S., Kosugi, A., Noda, S., Saitoh, S., Ogata, M., Iwahashi, Y., Miyazaki, N., Hamaoka, T. and Tohyama, M. 1996. Identification of a novel transmembrane semaphorin expressed on lymphocytes. *J. Biol. Chem.* 271: 33376-33381.
4. Hall, K.T., Bousmell, L., Schultze, J.L., Bousiotis, V.A., Dorfman, D.M., Cardoso, A.A., Bensussan, A., Nadler, L.M. and Freeman, G.J. 1996. Human CD100, a novel leukocyte semaphorin that promotes B-cell aggregation and differentiation. *Proc. Natl. Acad. Sci. USA* 93: 11780-11785.
5. Tamagnone, L., Artigiani, S., Chen, H., He, Z., Ming, G.I., Song, H., Chedotal, A., Winberg, M.L., Goodman, C.S., Poo, M., Tessier-Lavigne, M. and Comoglio, P.M. 1999. Plexins are a large family of receptors for transmembrane, secreted, and GPI-anchored semaphorins in vertebrates. *Cell* 99: 71-80.

CHROMOSOMAL LOCATION

Genetic locus: SEMA4D (human) mapping to 9q22.2; Sema4d (mouse) mapping to 13 A5.

SOURCE

CD100 (148-2D12) is a mouse monoclonal antibody raised against PHA stimulated human PBL.

RESEARCH USE

For research use only, not for use in diagnostic procedures.

PRODUCT

Each vial contains 200 µg IgG₁ kappa light chain in 1.0 ml of PBS with < 0.1% sodium azide and 0.1% gelatin.

CD100 (148-2D12) is available conjugated to either phycoerythrin (sc-21780 PE) or fluorescein (sc-21780 FITC), 200 µg/ml, for IF, IHC(P) and FCM.

APPLICATIONS

CD100 (148-2D12) is recommended for detection of CD100 of mouse, rat and human origin by Western Blotting (starting dilution 1:200, dilution range 1:100-1:1000), immunoprecipitation [1-2 µg per 100-500 µg of total protein (1 ml of cell lysate)] and flow cytometry (1 µg per 1 x 10⁶ cells).

Suitable for use as control antibody for CD100 siRNA (h): sc-42817, CD100 siRNA (m): sc-42818, CD100 shRNA Plasmid (h): sc-42817-SH, CD100 shRNA Plasmid (m): sc-42818-SH, CD100 shRNA (h) Lentiviral Particles: sc-42817-V and CD100 shRNA (m) Lentiviral Particles: sc-42818-V.

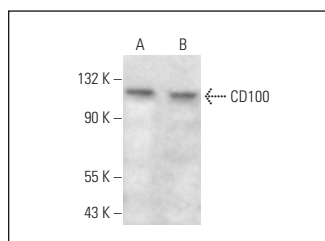
Molecular Weight of CD100: 150 kDa.

Positive Controls: Neuro-2A whole cell lysate: sc-364185, TK-1 whole cell lysate: sc-364798 or Jurkat whole cell lysate: sc-2204.

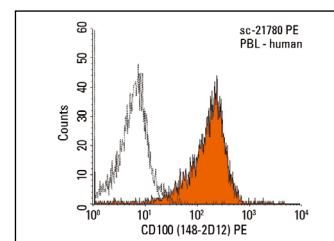
RECOMMENDED SUPPORT REAGENTS

To ensure optimal results, the following support reagents are recommended: 1) Western Blotting: use m-IgGκ BP-HRP: sc-516102 or m-IgGκ BP-HRP (Cruz Marker): sc-516102-CM (dilution range: 1:1000-1:10000), Cruz Marker™ Molecular Weight Standards: sc-2035, UltraCruz® Blocking Reagent: sc-516214 and Western Blotting Luminol Reagent: sc-2048. 2) Immunoprecipitation: use Protein A/G PLUS-Agarose: sc-2003 (0.5 ml agarose/2.0 ml).

DATA



CD100 (148-2D12): sc-21780. Western blot analysis of CD100 expression in Neuro-2A (A) and TK-1 (B) whole cell lysates.



CD100 (148-2D12) PE: sc-21780 PE. FCM analysis of human peripheral blood leukocytes. Black line histogram represents the isotype control, normal mouse IgG₁-PE: sc-2866.

STORAGE

Store at 4° C, **DO NOT FREEZE**. Stable for one year from the date of shipment. Non-hazardous. No MSDS required.

PROTOCOLS

See our web site at www.scbt.com for detailed protocols and support products.