

# C5 $\beta$ (V-18): sc-21938

## BACKGROUND

C3a, C4a and C5a are potent anaphylatoxins that are released during complement activation, a system of ligand-surface protein interactions specific to cells of hematopoietic lineage that aids in the elimination of pathogens. Complement C5 precursor contains C5a anaphylatoxin. C3a and C5a secretion correlates with pathophysiological phenotypes such as asthma and bacterial meningitis. Binding of these proteins to their respective G protein-coupled receptors (C3aR, C5aR), which are present on the surface of myeloid leukocytes, induces proinflammatory events such as cellular degranulation, smooth muscle contraction, arachidonic acid metabolism, cytokine release, leukocyte activation and cellular chemotaxis. C5aR utilizes the Ras-Raf-ERK1/2 cascade, couples to G<sub>i</sub>/G16 proteins, and is prevalent on the surface of hepatocyte, lung, smooth muscle and endothelial cells. Upon activation, C3aR and C5aR are susceptible to rapid GRK-mediated phosphorylation and Clathrin-coated vesicle targeting. The C5 precursor is first processed by the removal of four basic residues, forming two chains,  $\beta$  and  $\alpha$ , linked by a disulfide bond. C5 convertase activates C5 by cleaving the  $\alpha$  chain, releasing C5 $\alpha$  anaphylatoxin and generating C5 $\beta$ .

## REFERENCES

1. de Bruijn, M.H. and Fey, G.H. 1985. Human complement component C3: cDNA coding sequence and derived primary structure. *Proc. Natl. Acad. Sci. USA* 82: 708-712.
2. Buhl, A.M., Osawa, S. and Johnson, G.L. 1995. Mitogen-activated protein kinase activation requires two signal inputs from the human anaphylatoxin C5a receptor. *J. Biol. Chem.* 270: 19828-19832.
3. Stahel, P.F., Frei, K., Eugster, H.P., Fontana, A., Hummel, K.M., Wetsel, R.A., Ames, R.S. and Barnum, S.R. 1997. TNF $\alpha$ -mediated expression of the receptor for anaphylatoxin C5a on neurons in experimental *Listeria meningoencephalitis*. *J. Immunol.* 159: 861-869.
4. Langkabel, P., Zwirner, J. and Oppermann, M. 1999. Ligand-induced phosphorylation of anaphylatoxin receptors C3aR and C5aR is mediated by G protein-coupled receptor kinases. *Eur. J. Immunol.* 29: 3035-3046.
5. Settmacher, B., Bock, D., Saad, H., Gartner, S., Rheinheimer, C., Kohl, J., Bautsch, W. and Klos, A. 1999. Modulation of C3a activity: internalization of the human C3a receptor and its inhibition by C5a. *J. Immunol.* 162: 7409-7416.
6. Humbles, A.A., Lu, B., Nilsson, C.A., Lilly, C., Israel, E., Fujiwara, Y., Gerard, N.P. and Gerard, C. 2000. A role for the C3a anaphylatoxin receptor in the effector phase of asthma. *Nature* 406: 998-1001.

## CHROMOSOMAL LOCATION

Genetic locus: C5 (human) mapping to 9q33.2; Hc (mouse) mapping to 2 B.

## SOURCE

C5 $\beta$  (V-18) is an affinity purified goat polyclonal antibody raised against a peptide mapping within an internal region of C5 of human origin.

## RESEARCH USE

For research use only, not for use in diagnostic procedures.

## PRODUCT

Each vial contains 200  $\mu$ g IgG in 1.0 ml of PBS with < 0.1% sodium azide and 0.1% gelatin.

Blocking peptide available for competition studies, sc-21938 P, (100  $\mu$ g peptide in 0.5 ml PBS containing < 0.1% sodium azide and 0.2% BSA).

## APPLICATIONS

C5 $\beta$  (V-18) is recommended for detection of C5 precursor and C5 $\beta$  chain of mouse, rat and human origin by Western Blotting (starting dilution 1:200, dilution range 1:100-1:1000), immunoprecipitation [1-2  $\mu$ g per 100-500  $\mu$ g of total protein (1 ml of cell lysate)], immunofluorescence (starting dilution 1:50, dilution range 1:50-1:500) and solid phase ELISA (starting dilution 1:30, dilution range 1:30-1:3000).

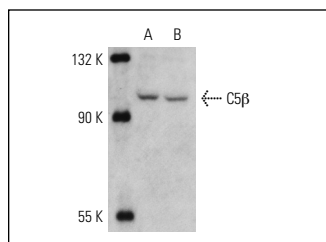
C5 $\beta$  (V-18) is also recommended for detection of C5 precursor and C5 $\beta$  chain in additional species, including equine and porcine.

Suitable for use as control antibody for C5 siRNA (h): sc-42848, C5 siRNA (m): sc-42849, C5 shRNA Plasmid (h): sc-42848-SH, C5 shRNA Plasmid (m): sc-42849-SH, C5 shRNA (h) Lentiviral Particles: sc-42848-V and C5 shRNA (m) Lentiviral Particles: sc-42849-V.

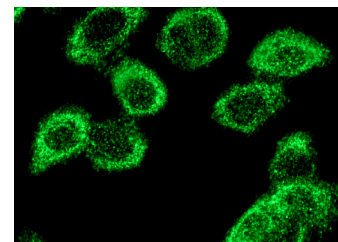
Molecular Weight of C5 $\beta$ : 189 kDa.

Positive Controls: A549 cell lysate: sc-2413 or Hep G2 cell lysate: sc-2227.

## DATA



C5 $\beta$  (V-18): sc-21938. Western blot analysis of C5 $\beta$  expression in Hep G2 (A) and A549 (B) whole cell lysates.



C5 $\beta$  (V-18): sc-21938. Immunofluorescence staining of methanol-fixed A549 cells showing cytoplasmic localization.

## STORAGE

Store at 4° C, \*\*DO NOT FREEZE\*\*. Stable for one year from the date of shipment. Non-hazardous. No MSDS required.

## PROTOCOLS

See our web site at [www.scbt.com](http://www.scbt.com) or our catalog for detailed protocols and support products.

**MONOS**  
Satisfaction  
Guaranteed

Try **C5 $\beta$  (E-8): sc-398247**, our highly recommended monoclonal alternative to C5 $\beta$  (V-18).