

Gab 3 (D-20): sc-22615

BACKGROUND

The Gab (GRB2-associated binder)/DOS ('Daughter of Sevenless') (Gab) family of adaptor proteins function as molecular scaffolds that mediate protein recruitment to RTKs. Cytokine/growth factor triggering of protein tyrosine kinase receptors (RTKs) initiates signaling cascades that progress to the nucleus where signals for activation, proliferation and differentiation occur. This scaffolding mechanism represents a critical link in cytokine/growth factor signaling routes. Gab1-3 contain pleckstrin homology and potential binding sites for SH2 and SH3 domain-containing proteins. The recruitment of signaling partners to Gab family members is phosphorylation dependent. Insulin receptor and EGF-receptor signaling are among the cascades that rely on Gab family members to elicit a nuclear response to an extracellular stimulus. The human Gab3 gene maps to chromosome Xq28 and encodes a 586 amino acid protein.

REFERENCES

1. Araki, E., Lipes, M.A., Patti, M.E., Bruning, J.C., Haag, B., Johnson, R.S., and Kahn, C.R. 1994. Alternative pathway of insulin signaling in mice with targeted disruption of the IRS-1 gene. *Nature* 372: 186-190.
2. Holgado-Madruga, M., Emllet, D.R., Moscatello, D.K., Godwin, A.K., and Wong, A.J. 1996. A Grb2-associated docking protein in EGF- and insulin-receptor signalling. *Nature* 379: 560-564.
3. Zhao, C., Yu, D.H., Shen, R., and Feng, G.S. 1999. Gab 2, a new pleckstrin homology domain-containing adapter protein, acts to uncouple signaling from ERK kinase to Elk-1. *J. Biol. Chem.* 274: 19649-19654.
4. Lock, L.S., Royal, I., Naujokas, M.A., and Park, M. 2000. Identification of an atypical GRB2 carboxyl-terminal SH3 domain binding site in Gab docking proteins reveals GRB2-dependent and -independent recruitment of Gab1 to receptor tyrosine kinases. *J. Biol. Chem.* 275: 31536-31545.
5. Wolf, I., Jenkins, B.J., Liu, Y., Seiffert, M., Custodio, J.M., Young, P., and Rohrschneider, L.R. 2002. Gab3, a new DOS/Gab family member, facilitates macrophage differentiation. *Mol. Cell. Biol.* 22: 231-244.
6. Online Mendelian Inheritance in Man, OMIM™. Johns Hopkins University, Baltimore, MD. MIM Number: 604439: 02/07/2002. World Wide Web URL: <http://www.ncbi.nlm.nih.gov/omim/>
7. LocusLink Report (LocusID: 139716). <http://www.ncbi.nlm.nih.gov/LocusLink/>

SOURCE

Gab 3 (D-20) is an affinity purified goat polyclonal antibody raised against a peptide mapping within an internal region of Gab 3 of mouse origin.

PRODUCT

Each vial contains 200 µg IgG in 1.0 ml of PBS with < 0.1% sodium azide and 0.1% gelatin.

Blocking peptide available for competition studies, sc-22615 P, (100 µg peptide in 0.5 ml PBS containing < 0.1% sodium azide and 0.2% BSA).

APPLICATIONS

Gab 3 (D-20) is recommended for detection of Gab 3 of mouse and rat origin by Western Blotting (starting dilution 1:200, dilution range 1:100-1:1000), immunoprecipitation [1–2 µg per 100–500 µg of total protein (1 ml of cell lysate)], immunofluorescence (starting dilution 1:50, dilution range 1:50-1:500) and solid phase ELISA (starting dilution 1:30, dilution range 1:30-1:3000).

Suitable for use as control antibody for Gab 3 siRNA (m): sc-40609.

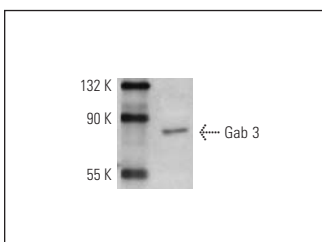
Molecular Weight of Gab 3: 75 kDa.

Positive Controls: rat spleen extract: sc-2397.

RECOMMENDED SECONDARY REAGENTS

To ensure optimal results, the following support (secondary) reagents are recommended: 1) Western Blotting: use donkey anti-goat IgG-HRP: sc-2020 (dilution range: 1:2000-1:100,000) or Cruz Marker™ compatible donkey anti-goat IgG-HRP: sc-2033 (dilution range: 1:2000-1:5000), Cruz Marker™ Molecular Weight Standards: sc-2035, TBS Blotto A Blocking Reagent: sc-2333 and Western Blotting Luminol Reagent: sc-2048. 2) Immunoprecipitation: use Protein A/G PLUS-Agarose: sc-2003 (0.5 ml agarose/ 2.0 ml). 3) Immunofluorescence: use donkey anti-goat IgG-FITC: sc-2024 (dilution range: 1:100-1:400) or donkey anti-goat IgG-TR: sc-2783 (dilution range: 1:100-1:400) with UltraCruz™ Mounting Medium: sc-24941.

DATA



Gab 3 (D-20): sc-22615. Western blot analysis of Gab 3 expression in rat spleen tissue extract.

STORAGE

Store at 4° C, ****DO NOT FREEZE****. Stable for one year from the date of shipment. Non-hazardous. No MSDS required.

RESEARCH USE

For research use only, not for use in diagnostic procedures.

PROTOCOLS

See our web site at www.scbt.com or our catalog for detailed protocols and support products.