

# Langerin (N-14): sc-22622

## BACKGROUND

Langerhans cells (LCs) are a subset of immature dendritic cells (DCs) that specifically localize in the epidermis and other mucosal epithelia. Epidermal LCs possess strong immunostimulatory capacity and play a central role in the initiation and regulation of immune responses. Langerin (CD207) is a Ca<sup>2+</sup>-dependent, C-type lectin domain-containing, type II transmembrane protein that induces epidermal LCs to differentiate into Birbeck granules (BG). BGs are organelles with superimposing and zippering membranes that influence proper class I type antigen presentation to the circulating T-cells. Human spleen, lymph node, thymus, liver, lung and heart express langerin protein. The human langerin gene maps to chromosome 2p13.3 and encodes a 328 amino acid protein.

## REFERENCES

- Valladeau, J., Duvert-Frances, V., Pin, J.J., Dezutter-Dambuyant, C., Vincent, C., Massacrier, C., Vincent, J., Yoneda, K., Banchereau, J., Caux, C., Davoust, J. and Saeland, S. 1999. The monoclonal antibody DCGM4 recognizes Langerin, a protein specific of Langerhans cells, and is rapidly internalized from the cell surface. *Eur. J. Immunol.* 29: 2695-2704.
- Valladeau, J., Ravel, O., Dezutter-Dambuyant, C., Moore, K., Kleijmeer, M., Liu, Y., Duvert-Frances, V., Vincent, C., Schmitt, D., Davoust, J., Caux, C., Lebecque, S. and Saeland, S. 2000. Langerin, a novel C-type lectin specific to Langerhans cells, is an endocytic receptor that induces the formation of Birbeck granules. *Immunity* 12: 71-81.
- Mohamadzadeh, M., Berard, F., Essert, G., Chalouni, C., Pulendran, B., Davoust, J., Bridges, G., Palucka, A.K. and Banchereau, J. 2001. Interleukin 15 skews monocyte differentiation into dendritic cells with features of Langerhans cells. *J. Exp. Med.* 194: 1013-1020.
- Larregina, A.T., Morelli, A.E., Spencer, L.A., Logar, A.J., Watkins, S.C., Thomson, A.W. and Falo, L.D., Jr. 2001. Dermal-resident CD14<sup>+</sup> cells differentiate into Langerhans cells. *Nat. Immunol.* 2: 1151-1158.

## CHROMOSOMAL LOCATION

Genetic locus: CD207 (human) mapping to 2p13.3.

## SOURCE

Langerin (N-14) is an affinity purified goat polyclonal antibody raised against a peptide mapping near the N-terminus of Langerin of human origin.

## PRODUCT

Each vial contains 200 µg IgG in 1.0 ml of PBS with < 0.1% sodium azide and 0.1% gelatin.

Blocking peptide available for competition studies, sc-22622 P, (100 µg peptide in 0.5 ml PBS containing < 0.1% sodium azide and 0.2% BSA).

## STORAGE

Store at 4° C, \*\*DO NOT FREEZE\*\*. Stable for one year from the date of shipment. Non-hazardous. No MSDS required.

## APPLICATIONS

Langerin (N-14) is recommended for detection of Langerin of human origin by Western Blotting (starting dilution 1:200, dilution range 1:100-1:1000), immunoprecipitation [1-2 µg per 100-500 µg of total protein (1 ml of cell lysate)], immunofluorescence (starting dilution 1:50, dilution range 1:50-1:500) and solid phase ELISA (starting dilution 1:30, dilution range 1:30-1:3000).

Suitable for use as control antibody for Langerin siRNA (h): sc-43888, Langerin shRNA Plasmid (h): sc-43888-SH and Langerin shRNA (h) Lentiviral Particles: sc-43888-V.

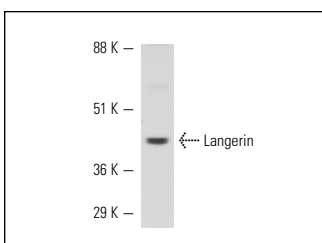
Molecular Weight of Langerin: 48 kDa.

Positive Controls: HeLa whole cell lysate: sc-2200.

## RECOMMENDED SECONDARY REAGENTS

To ensure optimal results, the following support (secondary) reagents are recommended: 1) Western Blotting: use donkey anti-goat IgG-HRP: sc-2020 (dilution range: 1:2000-1:100,000) or Cruz Marker™ compatible donkey anti-goat IgG-HRP: sc-2033 (dilution range: 1:2000-1:5000), Cruz Marker™ Molecular Weight Standards: sc-2035, TBS Blotto A Blocking Reagent: sc-2333 and Western Blotting Luminol Reagent: sc-2048. 2) Immunoprecipitation: use Protein A/G PLUS-Agarose: sc-2003 (0.5 ml agarose/2.0 ml). 3) Immunofluorescence: use donkey anti-goat IgG-FITC: sc-2024 (dilution range: 1:100-1:400) or donkey anti-goat IgG-TR: sc-2783 (dilution range: 1:100-1:400) with UltraCruz™ Mounting Medium: sc-24941.

## DATA



Langerin (N-14): sc-22622. Western blot analysis of Langerin expression in HeLa whole cell lysate.

## RESEARCH USE

For research use only, not for use in diagnostic procedures.

## PROTOCOLS

See our web site at [www.scbt.com](http://www.scbt.com) or our catalog for detailed protocols and support products.

**MONOS**  
Satisfaction  
Guaranteed

Try **Langerin (H-4): sc-271272**, our highly recommended monoclonal alternative to Langerin (N-14).