

# TSC-36 (T-18): sc-22650

## BACKGROUND

TSC-36 (also known as TGF- $\beta$ 1-stimulated clone 36, or FRP (follistatin-related protein 1) is a secreted extracellular glycoprotein. The amino acid sequence of TSC-36 is similar to follistatin, an inhibitor of activin, as it contains a follistatin module. TSC-36 is a heparin-binding protein suggested to have a role in the negative regulation of cellular growth, as its expression is induced in response to TGF- $\beta$ 1. In addition, TSC-36 is not found in small cell lung cancer (SCLC) cells, a highly aggressive neoplasm, but is detected in some non-small cell lung cancer (NSCLC) cells, a moderately aggressive neoplasm.

## CHROMOSOMAL LOCATION

Genetic locus: FSTL1 (human) mapping to 3q13.33; Fstl1 (mouse) mapping to 16 B3.

## SOURCE

TSC-36 (T-18) is an affinity purified goat polyclonal antibody raised against a peptide mapping within an internal region of TSC-36 of human origin.

## PRODUCT

Each vial contains 200  $\mu$ g IgG in 1.0 ml of PBS with < 0.1% sodium azide and 0.1% gelatin.

Blocking peptide available for competition studies, sc-22650 P, (100  $\mu$ g peptide in 0.5 ml PBS containing < 0.1% sodium azide and 0.2% BSA).

## STORAGE

Store at 4° C, **\*\*DO NOT FREEZE\*\***. Stable for one year from the date of shipment. Non-hazardous. No MSDS required.

## RESEARCH USE

For research use only, not for use in diagnostic procedures.

## APPLICATIONS

TSC-36 (T-18) is recommended for detection of precursor and mature chain of TSC-36 of mouse, rat and human origin by Western Blotting (starting dilution 1:200, dilution range 1:100-1:1000), immunoprecipitation [1-2  $\mu$ g per 100-500  $\mu$ g of total protein (1 ml of cell lysate)], immunofluorescence (starting dilution 1:50, dilution range 1:50-1:500) and solid phase ELISA (starting dilution 1:30, dilution range 1:30-1:3000).

TSC-36 (T-18) is also recommended for detection of precursor and mature chain of TSC-36 in additional species, including equine, canine, bovine and avian.

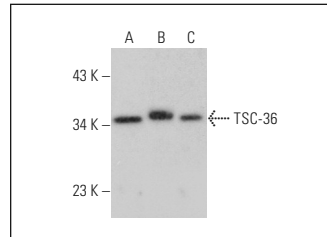
Suitable for use as control antibody for TSC-36 siRNA (h): sc-39815, TSC-36 siRNA (m): sc-39816, TSC-36 siRNA (r): sc-270458, TSC-36 shRNA Plasmid (h): sc-39815-SH, TSC-36 shRNA Plasmid (m): sc-39816-SH, TSC-36 shRNA Plasmid (r): sc-270458-SH, TSC-36 shRNA (h) Lentiviral Particles: sc-39815-V, TSC-36 shRNA (m) Lentiviral Particles: sc-39816-V and TSC-36 shRNA (r) Lentiviral Particles: sc-270458-V.

Positive Controls: Raji whole cell lysate: sc-364236, K-562 whole cell lysate: sc-2203 or NIH/3T3 whole cell lysate: sc-2210.

## RECOMMENDED SECONDARY REAGENTS

To ensure optimal results, the following support (secondary) reagents are recommended: 1) Western Blotting: use donkey anti-goat IgG-HRP: sc-2020 (dilution range: 1:2000-1:100,000) or Cruz Marker™ compatible donkey anti-goat IgG-HRP: sc-2033 (dilution range: 1:2000-1:5000), Cruz Marker™ Molecular Weight Standards: sc-2035, TBS Blotto A Blocking Reagent: sc-2333 and Western Blotting Luminol Reagent: sc-2048. 2) Immunoprecipitation: use Protein A/G PLUS-Agarose: sc-2003 (0.5 ml agarose/2.0 ml). 3) Immunofluorescence: use donkey anti-goat IgG-FITC: sc-2024 (dilution range: 1:100-1:400) or donkey anti-goat IgG-TR: sc-2783 (dilution range: 1:100-1:400) with UltraCruz™ Mounting Medium: sc-24941.

## DATA



TSC-36 (T-18): sc-22650. Western blot analysis of TSC-36 expression in Raji (A), K-562 (B) and NIH/3T3 (C) whole cell lysates.

## SELECT PRODUCT CITATIONS

1. Torres, S., et al. 2013. Proteome profiling of cancer-associated fibroblasts identifies novel proinflammatory signatures and prognostic markers for colorectal cancer. Clin. Cancer Res. 19: 6006-6019.

## PROTOCOLS

See our web site at [www.scbt.com](http://www.scbt.com) or our catalog for detailed protocols and support products.



Try **TSC-36 (JJ7): sc-80408**, our highly recommended monoclonal alternative to TSC-36 (T-18).