

# Gfi-1B (H-150): sc-22795

## BACKGROUND

Growth factor independent 1 (Gfi-1) is a transcriptional repressor that specifically binds to the DNA consensus sequence TAAATCAC(A/T)GCA. The carboxy terminus of Gfi-1 contains 6 C<sub>2</sub>H<sub>2</sub>-type zinc finger motifs, and zinc fingers 3, 4 and 5 are required for the binding of Gfi-1 to its DNA binding site. Gfi-1 also contains a 20 amino acid SNAG domain which mediates transcriptional repression. Gfi-1 represses Bax at the mRNA and protein levels resulting in the inhibition of cell death. Gfi1 is expressed outside the lymphoid system in granulocytes and activated macro-phages. Gfi-1B, a related protein, is another transcriptional repressor primarily expressed in bone marrow and spleen. Gfi-1B is a direct repressor of the p21 promoter and the Socs 1 and 3 promoters. The genes encoding human Gfi-1 and Gfi-1B map to chromosome 1p22.1 and 9q34.13, respectively.

## CHROMOSOMAL LOCATION

Genetic locus: GFI1B (human) mapping to 9q34.13; Gfi1b (mouse) mapping to 2 A3.

## SOURCE

Gfi-1B (H-150) is a rabbit polyclonal antibody raised against amino acids 21-170 of Gfi-1B of human origin.

## PRODUCT

Each vial contains 200 µg IgG in 1.0 ml of PBS with < 0.1% sodium azide and 0.1% gelatin. Also available as TransCruz reagent for Gel Supershift and ChIP applications, sc-22795 X, 200 µg/0.1 ml.

## STORAGE

Store at 4° C, **\*\*DO NOT FREEZE\*\***. Stable for one year from the date of shipment. Non-hazardous. No MSDS required.

## APPLICATIONS

Gfi-1B (H-150) is recommended for detection of Gfi-1B of human and, to a lesser extent, mouse and rat origin by Western Blotting (starting dilution 1:200, dilution range 1:100-1:1000), immunoprecipitation [1-2 µg per 100-500 µg of total protein (1 ml of cell lysate)], immunofluorescence (starting dilution 1:50, dilution range 1:50-1:500) and solid phase ELISA (starting dilution 1:30, dilution range 1:30-1:3000).

Gfi-1B (H-150) is also recommended for detection of Gfi-1B in additional species, including porcine.

Suitable for use as control antibody for Gfi-1B siRNA (h): sc-62374, Gfi-1B siRNA (m): sc-37910, Gfi-1B shRNA Plasmid (h): sc-62374-SH, Gfi-1B shRNA Plasmid (m): sc-37910-SH, Gfi-1B shRNA (h) Lentiviral Particles: sc-62374-V and Gfi-1B shRNA (m) Lentiviral Particles: sc-37910-V.

Gfi-1B (H-150) X TransCruz antibody is recommended for Gel Supershift and ChIP applications.

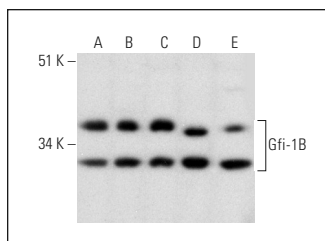
Molecular Weight of Gfi-1B: 41 kDa.

Positive Controls: K-562 whole cell lysate: sc-2203, Jurkat whole cell lysate: sc-2204 or Ramos nuclear extract: sc-2153.

## RECOMMENDED SECONDARY REAGENTS

To ensure optimal results, the following support (secondary) reagents are recommended: 1) Western Blotting: use goat anti-rabbit IgG-HRP: sc-2004 (dilution range: 1:2000-1:100,000) or Cruz Marker™ compatible goat anti-rabbit IgG-HRP: sc-2030 (dilution range: 1:2000-1:5000), Cruz Marker™ Molecular Weight Standards: sc-2035, TBS Blotto A Blocking Reagent: sc-2333 and Western Blotting Luminol Reagent: sc-2048. 2) Immunoprecipitation: use Protein A/G PLUS-Agarose: sc-2003 (0.5 ml agarose/2.0 ml). 3) Immunofluorescence: use goat anti-rabbit IgG-FITC: sc-2012 (dilution range: 1:100-1:400) or goat anti-rabbit IgG-TR: sc-2780 (dilution range: 1:100-1:400) with UltraCruz™ Mounting Medium: sc-24941.

## DATA



Gfi-1B (H-150): sc-22795. Western blot analysis of Gfi-1B expression in K-562 (A), HEL 92.1.7 (B), Jurkat (C), LADMAC (D) and Ramos (E) nuclear extracts.

## RESEARCH USE

For research use only, not for use in diagnostic procedures.

## PROTOCOLS

See our web site at [www.scbt.com](http://www.scbt.com) or our catalog for detailed protocols and support products.

**MONOS**  
Satisfaction  
Guaranteed

Try **Gfi-1B (B-7): sc-28356**, our highly recommended monoclonal alternative to Gfi-1B (H-150).