

Ets-1 (H-150): sc-22802

BACKGROUND

Ets-1 is the prototype member of a family of genes identified on the basis of homology to the v-Ets oncogene isolated from the E26 erythroblastosis virus. This family of genes currently includes Ets-1, Ets-2, Erg-1-3, Elk-1, Elf-1, Elf-5, NERF, PU.1, PEA3, ERM, FEV, ER81, Fli-1, TEL, Spi-B, ESE-1, ESE-3A, Net, ABT1 and ERF. Members of the Ets gene family exhibit varied patterns of tissue expression, and share a highly conserved carboxy-terminal domain containing a sequence related to the SV40 large T antigen nuclear localization signal sequence. This conserved domain is essential for Ets-1 binding to DNA and is likely to be responsible for the DNA binding activity of all members of the Ets gene family. Several of these proteins have been shown to recognize similar motifs in DNA that share a centrally located 5'-GGAA-3' element. Evidence indicates that the DNA binding activity by Ets-1 is regulated at the level of phosphorylation.

CHROMOSOMAL LOCATION

Genetic locus: ETS1 (human) mapping to 11q24.3; Ets1 (mouse) mapping to 9 A4.

SOURCE

Ets-1 (H-150) is a rabbit polyclonal antibody raised against amino acids 131-280 of Ets-1 of human origin.

PRODUCT

Each vial contains 200 µg IgG in 1.0 ml of PBS with < 0.1% sodium azide and 0.1% gelatin.

Available as TransCruz reagent for Gel Supershift and ChIP applications, sc-22802 X, 200 µg/0.1 ml.

APPLICATIONS

Ets-1 (H-150) is recommended for detection of Ets-1 of mouse, rat and human origin by Western Blotting (starting dilution 1:200, dilution range 1:100-1:1000), immunoprecipitation [1-2 µg per 100-500 µg of total protein (1 ml of cell lysate)], immunofluorescence (starting dilution 1:50, dilution range 1:50-1:500) and solid phase ELISA (starting dilution 1:30, dilution range 1:30-1:3000).

Ets-1 (H-150) is also recommended for detection of Ets-1 in additional species, including equine, canine, bovine and porcine.

Suitable for use as control antibody for Ets-1 siRNA (h): sc-29309, Ets-1 siRNA (m2): sc-270370, Ets-1 siRNA (r): sc-156062, Ets-1 shRNA Plasmid (h): sc-29309-SH, Ets-1 shRNA Plasmid (m2): sc-270370-SH, Ets-1 shRNA Plasmid (r): sc-156062-SH, Ets-1 shRNA (h) Lentiviral Particles: sc-29309-V, Ets-1 shRNA (m2) Lentiviral Particles: sc-270370-V and Ets-1 shRNA (r) Lentiviral Particles: sc-156062-V.

Ets-1 (H-150) X TransCruz antibody is recommended for Gel Supershift and ChIP applications.

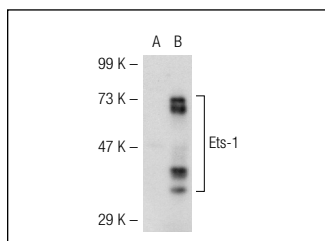
Molecular Weight of Ets-1: 55 kDa.

Positive Controls: Ets-1 (m): 293T Lysate: sc-120130, HeLa nuclear extract: sc-2120 or KNRK nuclear extract: sc-2141.

RECOMMENDED SECONDARY REAGENTS

To ensure optimal results, the following support (secondary) reagents are recommended: 1) Western Blotting: use goat anti-rabbit IgG-HRP: sc-2004 (dilution range: 1:2000-1:100,000) or Cruz Marker™ compatible goat anti-rabbit IgG-HRP: sc-2030 (dilution range: 1:2000-1:5000), Cruz Marker™ Molecular Weight Standards: sc-2035, TBS Blotto A Blocking Reagent: sc-2333 and Western Blotting Luminol Reagent: sc-2048. 2) Immunoprecipitation: use Protein A/G PLUS-Agarose: sc-2003 (0.5 ml agarose/2.0 ml). 3) Immunofluorescence: use goat anti-rabbit IgG-FITC: sc-2012 (dilution range: 1:100-1:400) or goat anti-rabbit IgG-TR: sc-2780 (dilution range: 1:100-1:400) with UltraCruz™ Mounting Medium: sc-24941.

DATA



Ets-1 (H-150): sc-22802. Western blot analysis of Ets-1 expression in non-transfected: sc-117752 (A) and mouse Ets-1 transfected: sc-120130 (B) 293T whole cell lysates.

SELECT PRODUCT CITATIONS

- Milkiewicz, M., et al. 2008. Shear stress-induced Ets-1 modulates protease inhibitor expression in microvascular endothelial cells. *J. Cell. Physiol.* 217: 502-510.
- Mole, D.J., et al. 2011. Expression of osteopontin coregulators in primary colorectal cancer and associated liver metastases. *Br. J. Cancer* 104: 1007-1012.
- Watanabe, M., et al. 2012. Ets-1 activates overexpression of JunB and CD30 in Hodgkin's lymphoma and anaplastic large-cell lymphoma. *Am. J. Pathol.* 180: 831-838.

STORAGE

Store at 4° C, **DO NOT FREEZE**. Stable for one year from the date of shipment. Non-hazardous. No MSDS required.

RESEARCH USE

For research use only, not for use in diagnostic procedures.


 MONOS
Satisfaction
Guaranteed

Try **Ets-1 (C-4): sc-55581**, our highly recommended monoclonal alternative to Ets-1 (H-150). Also, for AC, HRP, FITC, PE, Alexa Fluor® 488 and Alexa Fluor® 647 conjugates, see **Ets-1 (C-4): sc-55581**.