

# NF-H (E-15): sc-22909

## BACKGROUND

Neurofilament-H (NF-H), for neurofilament heavy polypeptide, a member of the intermediate filament family, is a major component of neuronal cytoskeletons. Neurofilaments are dynamic structures; they contain phosphorylation sites for a large number of protein kinases, including protein kinase A, protein kinase C, cyclin-dependent kinase 5, extracellular signal regulated kinase, glycogen synthase kinase-3, and stress-activated protein kinase gamma. In addition to their role in the control of axon caliber, neurofilaments may affect other cytoskeletal elements, such as microtubules and actin filaments. Changes in neurofilament phosphorylation or metabolism are frequently observed in neurodegenerative diseases, including amyotrophic lateral sclerosis (ALS), Parkinson's disease and Alzheimer's disease.

## CHROMOSOMAL LOCATION

Genetic locus: NEFH (human) mapping to 22q12.2; Nefh (mouse) mapping to 11 A1.

## SOURCE

NF-H (E-15) is an affinity purified goat polyclonal antibody raised against a peptide mapping within an internal region of NF-H of human origin.

## PRODUCT

Each vial contains 200 µg IgG in 1.0 ml of PBS with < 0.1% sodium azide and 0.1% gelatin.

Blocking peptide available for competition studies, sc-22909 P, (100 µg peptide in 0.5 ml PBS containing < 0.1% sodium azide and 0.2% BSA).

## STORAGE

Store at 4° C, **\*\*DO NOT FREEZE\*\***. Stable for one year from the date of shipment. Non-hazardous. No MSDS required.

## APPLICATIONS

NF-H (E-15) is recommended for detection of NF-H of mouse, rat and human origin by Western Blotting (starting dilution 1:200, dilution range 1:100-1:1000), immunoprecipitation [1-2 µg per 100-500 µg of total protein (1 ml of cell lysate)], immunofluorescence (starting dilution 1:50, dilution range 1:50-1:500), immunohistochemistry (including paraffin-embedded sections) (starting dilution 1:50, dilution range 1:50-1:500) and solid phase ELISA (starting dilution 1:30, dilution range 1:30-1:3000).

NF-H (E-15) is also recommended for detection of NF-H in additional species, including canine, bovine and porcine.

Suitable for use as control antibody for NF-H siRNA (h): sc-42068, NF-H siRNA (m): sc-42069, NF-H shRNA Plasmid (h): sc-42068-SH, NF-H shRNA Plasmid (m): sc-42069-SH, NF-H shRNA (h) Lentiviral Particles: sc-42068-V and NF-H shRNA (m) Lentiviral Particles: sc-42069-V.

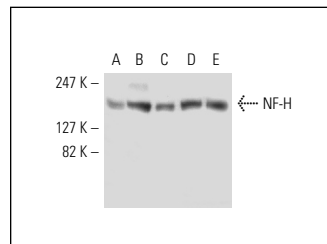
Molecular Weight of NF-H: 200 kDa.

Positive Controls: EOC 20 whole cell lysate: sc-364187, U-87 MG cell lysate: sc-2411 or H4 cell lysate: sc-2408.

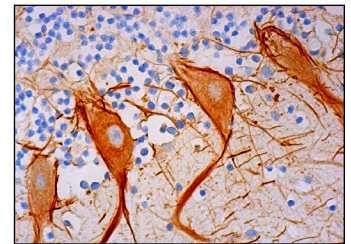
## RECOMMENDED SECONDARY REAGENTS

To ensure optimal results, the following support (secondary) reagents are recommended: 1) Western Blotting: use donkey anti-goat IgG-HRP: sc-2020 (dilution range: 1:2000-1:100,000) or Cruz Marker™ compatible donkey anti-goat IgG-HRP: sc-2033 (dilution range: 1:2000-1:5000), Cruz Marker™ Molecular Weight Standards: sc-2035, TBS Blotto A Blocking Reagent: sc-2333 and Western Blotting Luminol Reagent: sc-2048. 2) Immunoprecipitation: use Protein A/G PLUS-Agarose: sc-2003 (0.5 ml agarose/2.0 ml). 3) Immunofluorescence: use donkey anti-goat IgG-FITC: sc-2024 (dilution range: 1:100-1:400) or donkey anti-goat IgG-TR: sc-2783 (dilution range: 1:100-1:400) with UltraCruz™ Mounting Medium: sc-24941. 4) Immunohistochemistry: use ImmunoCruz™: sc-2053 or ABC: sc-2023 goat IgG Staining Systems.

## DATA



NF-H (E-15): sc-22909. Western blot analysis of NF-H expression in SK-N-MC (A), H4 (B), T98G (C), U-87 MG (D) and EOC 20 (E) whole cell lysates.



NF-H (E-15): sc-22909. Immunoperoxidase staining of formalin fixed, paraffin-embedded human cerebellum tissue showing cytoplasmic and membrane staining of Purkinje cells, and neuropil staining in the granular layer and molecular layer.

## RESEARCH USE

For research use only, not for use in diagnostic procedures.

## PROTOCOLS

See our web site at [www.scbt.com](http://www.scbt.com) or our catalog for detailed protocols and support products.


 MONOS  
Satisfaction  
Guaranteed

Try **NF-H (RNF402): sc-32729** or **NF-H (A-12): sc-133165**, our highly recommended monoclonal alternatives to NF-H (E-15).