

# GGA1 (N-20): sc-23261

## BACKGROUND

The GGA family of proteins (Golgi-localized,  $\gamma$ -adaptin ear-containing, ARF-binding proteins) are ubiquitous coat proteins that facilitate the trafficking of soluble proteins from the *trans*-Golgi network (TGN) to endosomes/lysosomes by means of interactions with TGN-sorting receptors, ARF (ADP-ribosylation factor) and clathrin. Members of the GGA family, GGA1, GGA2 (also known as VEAR) and GGA3, are multidomain proteins that bind mannose 6-phosphate receptors (MPRs). GGAs have modular structures with an N-terminal VHS (VPS-27, Hrs and STAM) domain followed by a GAT (GGA and TOM1) domain, a connecting hinge segment and a C-terminal GAE ( $\gamma$ -adaptin ear) domain. The amino-terminal VHS domains of GGAs form complexes with the cytoplasmic domains of sorting receptors by recognizing acidic-cluster dileucine (ACLL) sequences. GGA1 and GGA2 do not associate with each other, but they do co-localize on perinuclear membranes. The cytosolic domain of memapsin 2, but not that of memapsin 1, binds the VHS domains of GGA1 and GGA2. The human GGA1 gene maps to chromosome 22 and encodes a protein that shares 45% sequence identity with GGA2 and GGA3.

## CHROMOSOMAL LOCATION

Genetic locus: GGA1 (human) mapping to 22q13.31; Gga1 (mouse) mapping to 15 E1.

## SOURCE

GGA1 (N-20) is an affinity purified goat polyclonal antibody raised against a peptide mapping at the N-terminus of GGA1 of human origin.

## PRODUCT

Each vial contains 200  $\mu$ g IgG in 1.0 ml of PBS with < 0.1% sodium azide and 0.1% gelatin.

Blocking peptide available for competition studies, sc-23261 P, (100  $\mu$ g peptide in 0.5 ml PBS containing < 0.1% sodium azide and 0.2% BSA).

## RESEARCH USE

For research use only, not for use in diagnostic procedures.

## APPLICATIONS

GGA1 (N-20) is recommended for detection of GGA1 of mouse, rat and human origin by Western Blotting (starting dilution 1:200, dilution range 1:100-1:1000), immunoprecipitation [1-2  $\mu$ g per 100-500  $\mu$ g of total protein (1 ml of cell lysate)], immunofluorescence (starting dilution 1:50, dilution range 1:50-1:500) and solid phase ELISA (starting dilution 1:30, dilution range 1:30-1:3000). GGA1 (N-20) is also recommended for detection of GGA1 in additional species, including equine, canine, bovine and porcine.

Suitable for use as control antibody for GGA1 siRNA (h): sc-41167, GGA1 siRNA (m): sc-41168, GGA1 shRNA Plasmid (h): sc-41167-SH, GGA1 shRNA Plasmid (m): sc-41168-SH, GGA1 shRNA (h) Lentiviral Particles: sc-41167-V and GGA1 shRNA (m) Lentiviral Particles: sc-41168-V.

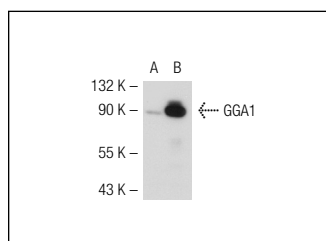
Molecular Weight of GGA1: 85 kDa.

Positive Controls: HeLa whole cell lysate: sc-2200, GGA1 (m): 293T Lysate: sc-120473 or GGA1 (h2): 293T Lysate: sc-128702.

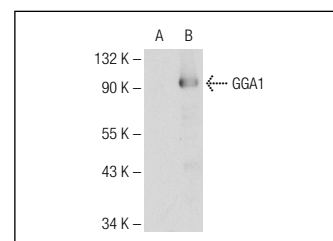
## RECOMMENDED SECONDARY REAGENTS

To ensure optimal results, the following support (secondary) reagents are recommended: 1) Western Blotting: use donkey anti-goat IgG-HRP: sc-2020 (dilution range: 1:2000-1:100,000) or Cruz Marker™ compatible donkey anti-goat IgG-HRP: sc-2033 (dilution range: 1:2000-1:5000), Cruz Marker™ Molecular Weight Standards: sc-2035, TBS Blotto A Blocking Reagent: sc-2333 and Western Blotting Luminol Reagent: sc-2048. 2) Immunoprecipitation: use Protein A/G PLUS-Agarose: sc-2003 (0.5 ml agarose/2.0 ml). 3) Immunofluorescence: use donkey anti-goat IgG-FITC: sc-2024 (dilution range: 1:100-1:400) or donkey anti-goat IgG-TR: sc-2783 (dilution range: 1:100-1:400) with UltraCruz™ Mounting Medium: sc-24941.

## DATA



GGA1 (N-20): sc-23261. Western blot analysis of GGA1 expression in non-transfected: sc-117752 (A) and mouse GGA1 transfected: sc-120473 (B) 293T whole cell lysates.



GGA1 (N-20): sc-23261. Western blot analysis of GGA1 expression in non-transfected: sc-117752 (A) and human GGA1 transfected: sc-128702 (B) 293T whole cell lysates.

## STORAGE

Store at 4° C, \*\*DO NOT FREEZE\*\*. Stable for one year from the date of shipment. Non-hazardous. No MSDS required.

## PROTOCOLS

See our web site at [www.scbt.com](http://www.scbt.com) or our catalog for detailed protocols and support products.



Try **GGA1 (D-6): sc-271927** or **GGA1 (A-1): sc-390837**, our highly recommended monoclonal alternatives to GGA1 (N-20).