

cleaved Thrombin APII (r323): sc-23332

BACKGROUND

Hemostasis following tissue injury involves the deployment of essential plasma procoagulants (Prothrombin and Factors X, IX, V, and VIII), which are involved in a blood coagulation cascade that leads to the formation of insoluble Fibrin clots and the promotion of platelet aggregation. Coagulation factor 2, also designated Prothrombin or Factor 2, is proteolytically cleaved to form Thrombin in the first step of the coagulation cascade. Thrombin is a serine protease that influences cellular mitogenesis, tumor growth, metastasis, and can initiate platelet aggregation and secretion. Thrombin also influences vascular integrity during development and postnatal life. During the mechanism of wound healing, Thrombin may coordinate connective tissue proteins by stimulating fibroblast procollagen production.

REFERENCES

1. Davie, E.W. and Fujikawa, K. 1975. Basic mechanisms in blood coagulation. *Annu. Rev. Biochem.* 44: 799-829.
2. Royle, N.J., Irwin, D.M., Koschinsky, M.L., MacGillivray, R.T. and Hamerton, J.L. 1987. Human genes encoding prothrombin and ceruloplasmin map to 11p11-q12 and 3q21-24, respectively. *Somat. Cell Mol. Genet.* 13: 285-292.
3. Davie, E.W., Fujikawa, K. and Kisiel, W. 1991. The coagulation cascade: initiation, maintenance, and regulation. *Biochemistry* 30: 10363-10370.
4. Chambers, R.C., Dabbagh, K., McNulty, R.J., Gray, A.J., Blanc-Brude, O.P. and Laurent, G.J. 1998. Thrombin stimulates fibroblast procollagen production via proteolytic activation of protease-activated receptor 1. *Biochem. J.* 333: 121-127.
5. Huang, Y.Q., Li, J.J. and Karparkin, S. 2000. Thrombin inhibits tumor cell growth in association with up-regulation of p21^{waf/cip1} and caspases via a p53-independent, STAT-1-dependent pathway. *J. Biol. Chem.* 275: 6462-6468.
6. LocusLink Report (LocusID: 2147). <http://www.ncbi.nlm.nih.gov/LocusLink/>

SOURCE

cleaved Thrombin APII (r323) is a goat polyclonal antibody raised against a short amino acid sequence containing the neoepitope at a short amino acid sequence containing the neoepitope at Arg 323 of Thrombin Activation Peptide 2 of rat origin.

PRODUCT

Each vial contains 200 µg IgG in 1.0 ml of PBS with < 0.1% sodium azide and 0.1% gelatin.

Blocking peptide available for competition studies, sc-23332 P, (100 µg peptide in 0.5 ml PBS containing < 0.1% sodium azide and 0.2% BSA).

STORAGE

Store at 4° C, ****DO NOT FREEZE****. Stable for one year from the date of shipment. Non-hazardous. No MSDS required.

RESEARCH USE

For research use only, not for use in diagnostic procedures.

APPLICATIONS

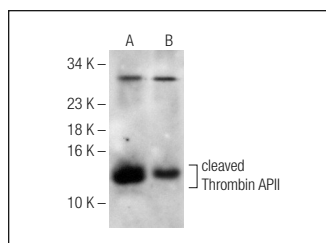
cleaved Thrombin APII (r323) is recommended for detection of cleaved Thrombin APII of rat origin by Western Blotting (starting dilution 1:200, dilution range 1:100-1:1000), immunoprecipitation [1-2 µg per 100-500 µg of total protein (1 ml of cell lysate)], immunofluorescence (starting dilution 1:50, dilution range 1:50-1:500) and solid phase ELISA (starting dilution 1:30, dilution range 1:30-1:3000); does not detect API, non-cleaved APII, LC, HC or Prothrombin.

Positive Controls: rat PBL whole cell lysate.

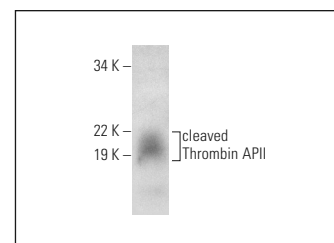
RECOMMENDED SECONDARY REAGENTS

To ensure optimal results, the following support (secondary) reagents are recommended: 1) Western Blotting: use donkey anti-goat IgG-HRP: sc-2020 (dilution range: 1:2000-1:100,000) or Cruz Marker™ compatible donkey anti-goat IgG-HRP: sc-2033 (dilution range: 1:2000-1:5000), Cruz Marker™ Molecular Weight Standards: sc-2035, TBS Blotto A Blocking Reagent: sc-2333 and Western Blotting Luminol Reagent: sc-2048. 2) Immunoprecipitation: use Protein A/G PLUS-Agarose: sc-2003 (0.5 ml agarose/2.0 ml). 3) Immunofluorescence: use donkey anti-goat IgG-FITC: sc-2024 (dilution range: 1:100-1:400) or donkey anti-goat IgG-TR: sc-2783 (dilution range: 1:100-1:400) with UltraCruz™ Mounting Medium: sc-24941.

DATA



cleaved Thrombin APII (r323): sc-23332. Western blot analysis of cleaved Thrombin APII expression in human PBL (A) and rat PBL (B) whole cell lysates. Note cleaved Thrombin APII expression in lane B.



cleaved Thrombin APII (r323): sc-23332. Western blot analysis of cleaved Thrombin APII expression in human platelet extract.

PROTOCOLS

See our web site at www.scbt.com or our catalog for detailed protocols and support products.

MONOS
Satisfaction
Guaranteed

Try **cleaved Thrombin APII (G-1): sc-398035** or **cleaved Thrombin APII (B-7): sc-398087**, our highly recommended monoclonal alternatives to cleaved Thrombin APII (r323).