

# Laminin $\beta$ -2 (D-16): sc-23412

## BACKGROUND

The Laminins comprise a growing family of disulfide-linked heterotrimers consisting of three genetically distinct polypeptide chains, designated  $\alpha$ ,  $\beta$  and  $\gamma$ . A major component of the basal lamina, Laminins play a crucial role in providing a scaffolding upon which tissues are assembled and which serves as a physical barrier separating specialized tissues. During embryogenesis and early development, cells migrate along basement membranes, which are required for the polarization of cells. The  $\beta$ -2 Laminin chain plays a role in melanoma spread, promoting tumor migration along the abluminal surface of vessel, a phenomenon which has been termed extra-vascular migratory metastasis.

## REFERENCES

1. Yurchenco, P.D. and O'Rear, J.J. 1994. Basal lamina assembly. *Curr. Opin. Cell Biol.* 6: 674-681.
2. Engvall, E. 1995. Structure and function of basement membranes. *Intl. J. Dev. Biol.* 39: 781-787.

## CHROMOSOMAL LOCATION

Genetic locus: LAMB2 (human) mapping to 3p21.31; Lamb2 (mouse) mapping to 9 F2.

## SOURCE

Laminin  $\beta$ -2 (D-16) is an affinity purified goat polyclonal antibody raised against a peptide mapping within an internal region of Laminin  $\beta$ -2 of human origin.

## PRODUCT

Each vial contains 200  $\mu$ g IgG in 1.0 ml of PBS with < 0.1% sodium azide and 0.1% gelatin.

Blocking peptide available for competition studies, sc-23412 P, (100  $\mu$ g peptide in 0.5 ml PBS containing < 0.1% sodium azide and 0.2% BSA).

## APPLICATIONS

Laminin  $\beta$ -2 (D-16) is recommended for detection of Laminin  $\beta$ -2 of mouse, rat and human origin by Western Blotting (starting dilution 1:200, dilution range 1:100-1:1000), immunoprecipitation [1-2  $\mu$ g per 100-500  $\mu$ g of total protein (1 ml of cell lysate)], immunofluorescence (starting dilution 1:50, dilution range 1:50-1:500) and solid phase ELISA (starting dilution 1:30, dilution range 1:30-1:3000).

Laminin  $\beta$ -2 (D-16) is also recommended for detection of Laminin  $\beta$ -2 in additional species, including equine, canine, bovine and porcine.

Suitable for use as control antibody for Laminin  $\beta$ -2 siRNA (h): sc-35784, Laminin  $\beta$ -2 siRNA (m): sc-35785, Laminin  $\beta$ -2 shRNA Plasmid (h): sc-35784-SH, Laminin  $\beta$ -2 shRNA Plasmid (m): sc-35785-SH, Laminin  $\beta$ -2 shRNA (h) Lentiviral Particles: sc-35784-V and Laminin  $\beta$ -2 shRNA (m) Lentiviral Particles: sc-35785-V.

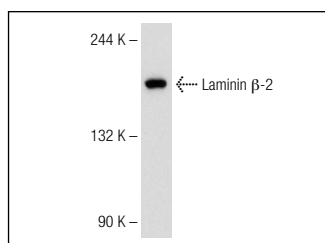
Molecular Weight of Laminin  $\beta$ -2: 200 kDa.

Positive Controls: DU 145 cell lysate: sc-2268 or LNCaP cell lysate: sc-2231.

## RECOMMENDED SECONDARY REAGENTS

To ensure optimal results, the following support (secondary) reagents are recommended: 1) Western Blotting: use donkey anti-goat IgG-HRP: sc-2020 (dilution range: 1:2000-1:100,000) or Cruz Marker™ compatible donkey anti-goat IgG-HRP: sc-2033 (dilution range: 1:2000-1:5000), Cruz Marker™ Molecular Weight Standards: sc-2035, TBS Blotto A Blocking Reagent: sc-2333 and Western Blotting Luminol Reagent: sc-2048. 2) Immunoprecipitation: use Protein A/G PLUS-Agarose: sc-2003 (0.5 ml agarose/2.0 ml). 3) Immunofluorescence: use donkey anti-goat IgG-FITC: sc-2024 (dilution range: 1:100-1:400) or donkey anti-goat IgG-TR: sc-2783 (dilution range: 1:100-1:400) with UltraCruz™ Mounting Medium: sc-24941.

## DATA



Laminin  $\beta$ -2 (D-16): sc-23412. Western blot analysis of Laminin  $\beta$ -2 expression in DU 145 whole cell lysate.

## SELECT PRODUCT CITATIONS

1. Saad, F.A., et al. 2010. Intracellular lysyl oxidase: effect of a specific inhibitor on nuclear mass in proliferating cells. *Biochem. Biophys. Res. Commun.* 396: 944-949.

## STORAGE

Store at 4° C, \*\*DO NOT FREEZE\*\*. Stable for one year from the date of shipment. Non-hazardous. No MSDS required.

## RESEARCH USE

For research use only, not for use in diagnostic procedures.

## PROTOCOLS

See our web site at [www.scbt.com](http://www.scbt.com) or our catalog for detailed protocols and support products.



Try **Laminin  $\beta$ -2 (C4): sc-59980** or **Laminin  $\beta$ -2 (H-1): sc-133241**, our highly recommended monoclonal alternatives to Laminin  $\beta$ -2 (D-16).