

bovine anti-goat IgG-FITC: sc-2348

BACKGROUND

Santa Cruz Biotechnology's secondary antibodies are available conjugated to either an enzyme, biotin or fluorophore for use in a variety of antibody-based applications including Western Blot, immunostaining, flow cytometry and ELISA. Secondary antibodies are commonly affinity purified against immobilized whole IgG or against antibody fragments. Santa Cruz Biotechnology offers an extensive selection of secondary antibodies optimized for immunohistochemistry and flow cytometry, and are labeled with either biotin, FITC (fluorescein isothiocyanate), Texas Red®, TRITC (tetramethyl rhodamine isothiocyanate), PE (phycoerythrin), PerCP (peridinin chlorophyll protein complex) and PerCP-Cy5.5 (peridinin chlorophyll protein complex with cyanin-5.5). Immunohistochemistry and flow cytometry secondary antibodies are specific for commonly used primary antibody species, including goat, rabbit, mouse and rat.

SOURCE

bovine anti-goat IgG-FITC is a pre-adsorbed, affinity purified secondary antibody raised in bovine against goat IgG and conjugated to FITC (fluorescein isothiocyanate).

PRODUCT

Each vial contains 200 µg bovine IgG (pre-adsorbed with mouse and human IgG) in 0.5 ml of either PBS containing 0.02% sodium azide (for IF), or PBS containing 0.1% gel and 0.1% sodium azide (for FCM).

APPLICATIONS

bovine anti-goat IgG-FITC is recommended for detection of goat IgG by immunofluorescence staining (starting dilution: 1:100, dilution range: 1:100-1:400), immunohistochemical staining (starting dilution: 1:100, dilution range: 1:100-1:400) and flow cytometry (0.5-1 µg per 1 x 10⁶ cells).

RECOMMENDED SUPPORT PRODUCTS

A. TISSUE CULTURE CELLS

- CrystalCruz™ Cover Glasses, 22 x 50 mm, precleaned: sc-24975
- CrystalCruz™ Micro Slides 75 x 25 mm; 72 frosted sides: sc-24976
- PBS (Phosphate Buffered Saline), powder, 1 packet: sc-24947
- Formaldehyde, 37% formaldehyde solution, 25 ml: sc-203049
- Hydrogen Peroxide, 30% solution, 100 ml: sc-203336

B. FROZEN TISSUE SECTIONS

- Organo/Limonene Mount, non-toxic alternative to Permout, 100 ml: sc-45087
- UltraCruz™ Mounting Medium, aqueous-based, 10 ml: sc-24941
- ImmunoHistoMount, aqueous-based mounting medium, 30 ml: sc-45086
- Immuno *In Situ* Mount, for use with *in situ* hybridization, 30 ml: sc-45088

C. FORMALIN-FIXED, PARAFFIN-EMBEDDED TISSUE SECTIONS

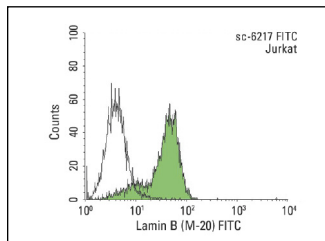
- Paraffin, for the preparation of tissue samples for staining, 500 g: sc-286633
- Xylenes, mixed isomers with ethylbenzene, 500 ml: sc-237422
- Hematoxylin, Gill's Formulation #2; nuclear counter stain, 100 ml: sc-24973

Texas Red® is a registered trademark of Molecular Probes (6/02).

STORAGE

Store at 4° C, **DO NOT FREEZE**. Stable for one year from the date of shipment. Non-hazardous. No MSDS required.

DATA



bovine anti-goat IgG-FITC: sc-2348. Indirect, intracellular FCM analysis of fixed and permeabilized Jurkat cells stained with Lamin B (M-20), followed by FITC-conjugated bovine anti-goat IgG: sc-2348. Black line histogram represents the iso-type control, normal goat IgG: sc-3887. Antibody tested: Lamin B (M-20): sc-6217.

SELECT PRODUCT CITATIONS

- Chuang, T.C., et al. 2002. The Epstein-Barr virus nuclear antigen-1 may act as a transforming suppressor of the HER2/neu oncogene. *FEBS Lett.* 532: 135-142.
- Yang, Y., et al. 2006. Transforming growth factor- β 1 induces epithelial-to-mesenchymal transition and apoptosis via a cell cycle-dependent mechanism. *Oncogene* 25: 7235-7244.
- Wang, C., et al. 2007. C/EBP α 30 plays transcriptional regulatory roles distinct from C/EBP α 42. *Cell Res.* 17: 374-383.
- Ott, H.C., et al. 2007. The adult human heart as a source for stem cells: repair strategies with embryonic-like progenitor cells. *Nat. Clin. Pract. Cardiovasc. Med.* 4: S27-S39.
- Wang, L.J., et al. 2008. Taurine rescues vascular endothelial dysfunction in streptozocin-induced diabetic rats: correlated with downregulation of LOX-1 and ICAM-1 expression on aortas. *Eur. J. Pharmacol.* 597: 75-80.
- Ertunc, M., et al. 2009. Differential contractile impairment of fast- and slow-twitch skeletal muscles in a rat model of doxorubicin-induced congestive heart failure. *Pharmacology* 84: 240-248.
- Xi, D., et al. 2009. Dizocilpine (MK-801) induces distinct changes of N-methyl-D-aspartic acid receptor subunits in parvalbumin-containing interneurons in young adult rat prefrontal cortex. *Int. J. Neuropsychopharmacol.* 12: 1395-1408.
- Koon, H.W., et al. 2011. Cathelicidin signaling via the Toll-like receptor protects against colitis in mice. *Gastroenterology* 141: 1852.e1-1863.e3.
- Han, X., et al. 2011. InlB-mediated *Listeria monocytogenes* internalization requires a balanced phospholipase D activity maintained through phosphocofilin. *Mol. Microbiol.* 81: 860-880.

RESEARCH USE

For research use only, not for use in diagnostic procedures.