

Shank 1/2/3 (C-20): sc-23543

BACKGROUND

SH3 and multiple ankyrin repeat domains 1-3 (Shank1-3) of the Shank/ProSAP family are molecular scaffolds in the postsynaptic density (PSD). The PSD is an electron-dense structure underneath the postsynaptic plasma membrane of excitatory synapses that anchors and clusters glutamate receptors opposite to the presynaptic neurotransmitter release site. Shank proteins contain PDZ modular domains that coordinate the synaptic localization of ion channels, receptors, signaling enzymes, and cell adhesion molecules. The PDZ domain mediates protein-protein interactions via the recognition of a conserved sequence motif at the C-terminus of their target protein(s). Shank recruits betaPIX and PAK to spines to regulate postsynaptic structure and interacts with NMDA receptor and metabotropic glutamate receptor complexes. Transcript splice variation in the Shank family influences the spectrum of Shank-interacting proteins in the PSDs of adult and developing brain to ensure normal development.

REFERENCES

1. Lim, S., et al. 1999. Characterization of the Shank family of synaptic proteins. Multiple genes, alternative splicing, and differential expression in brain and development. *J. Biol. Chem.* 274: 29510-29518.
2. Sheng, M., et al. 2000. The Shank family of scaffold proteins. *J. Cell Sci.* 113: 1851-1856.

SOURCE

Shank 1/2/3 (C-20) is an affinity purified goat polyclonal antibody raised against a peptide mapping at the C-terminus of Shank 1 of human origin.

PRODUCT

Each vial contains 200 µg IgG in 1.0 ml of PBS with < 0.1% sodium azide and 0.1% gelatin.

Blocking peptide available for competition studies, sc-23543 P, (100 µg peptide in 0.5 ml PBS containing < 0.1% sodium azide and 0.2% BSA).

STORAGE

Store at 4° C, ****DO NOT FREEZE****. Stable for one year from the date of shipment. Non-hazardous. No MSDS required.

APPLICATIONS

Shank 1/2/3 (C-20) is recommended for detection of Shank 1/2/3 of mouse, rat and human origin by Western Blotting (starting dilution 1:200, dilution range 1:100-1:1000), immunoprecipitation [1-2 µg per 100-500 µg of total protein (1 ml of cell lysate)], immunofluorescence (starting dilution 1:50, dilution range 1:50-1:500) and solid phase ELISA (starting dilution 1:30, dilution range 1:30-1:3000).

Shank 1/2/3 (C-20) is also recommended for detection of Shank 1/2/3 in additional species, including canine, bovine, porcine and avian.

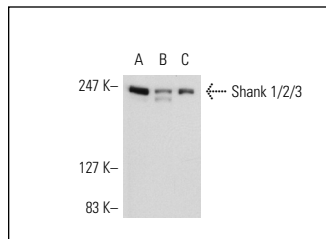
Molecular Weight of Shank 1/2/3: 240 kDa.

Positive Controls: IMR-32 cell lysate: sc-2409, SK-N-MC cell lysate: sc-2237 or COS whole cell lysate: sc-364228.

RECOMMENDED SECONDARY REAGENTS

To ensure optimal results, the following support (secondary) reagents are recommended: 1) Western Blotting: use donkey anti-goat IgG-HRP: sc-2020 (dilution range: 1:2000-1:100,000) or Cruz Marker™ compatible donkey anti-goat IgG-HRP: sc-2033 (dilution range: 1:2000-1:5000), Cruz Marker™ Molecular Weight Standards: sc-2035, TBS Blotto A Blocking Reagent: sc-2333 and Western Blotting Luminol Reagent: sc-2048. 2) Immunoprecipitation: use Protein A/G PLUS-Agarose: sc-2003 (0.5 ml agarose/2.0 ml). 3) Immunofluorescence: use donkey anti-goat IgG-FITC: sc-2024 (dilution range: 1:100-1:400) or donkey anti-goat IgG-TR: sc-2783 (dilution range: 1:100-1:400) with UltraCruz™ Mounting Medium: sc-24941.

DATA



Shank 1/2/3 (C-20): sc-23543. Western blot analysis of Shank 1/2/3 expression in IMR-32 (A), SK-N-MC (B) and COS (C) whole cell lysates.

SELECT PRODUCT CITATIONS

1. Linke, B., et al. 2009. Toponomics analysis of drug-induced changes in arachidonic acid-dependent signaling pathways during spinal nociceptive processing. *J. Proteome Res.* 8: 4851-4859.
2. Catarino, T., et al. 2012. Regulation of synapse composition by protein acetylation: the role of acetylated cortactin. *J. Cell Sci.* 126: 149-162.

RESEARCH USE

For research use only, not for use in diagnostic procedures.

PROTOCOLS

See our web site at www.scbt.com or our catalog for detailed protocols and support products.


 MONOS
Satisfaction
Guaranteed

Try **Shank 1/2/3 (G-12): sc-393963**, our highly recommended monoclonal alternative to Shank 1/2/3 (C-20).