

# Septin 1 (T-16): sc-23782

## BACKGROUND

The septins are a family of GTPase enzymes, some of which are required for cytokinesis and others of which are associated with exocytosis. Members of the septin family can form heteropolymer complexes and also play a role in the organization of new growth in organisms. The transcriptional regulation of all septins is complex, resulting in alternatively spliced variants. At least three septins (Septin 1, 2 and 4) are associated with Tau-based paired helical filament core and may contribute to the formation of neurofibrillary tangle as integral constituents of paired helical filaments. Septin 3 (G-Septin), a GTP-binding protein, is highly expressed in brain and is regulated by protein kinase G in neurons. The human SEPT4 (H5/PNUTL2/CDCrEL-2) gene encodes ARTS (for apoptosis-related protein in the TGF- $\beta$  signaling pathway), which is expressed in many cells and acts to enhance cell death induced by TGF- $\beta$  or, to a lesser extent, by other apoptotic agents. ARTS is localized to mitochondria and translocates to the nucleus when apoptosis occurs. Septin 5 is a major form of the CDCREL-1 septin in the adult neocortex of mammals. Human septin 6 protein contains an ATP-GTP binding motif and three nuclear targeting sequences in its C-terminus. Septin 6 is the third septin members that is fused to the MLL protein, in addition to hCDCREL and MSF.

## REFERENCES

1. Kinoshita, A., et al. 1998. Identification of septins in neurofibrillary tangles in Alzheimer's disease. *Am. J. Pathol.* 153: 1551-1560.
2. Xue, J., et al. 2000. Phosphorylation of a new brain-specific septin, G-Septin, by cGMP-dependent protein kinase. *J. Biol. Chem.* 275: 10047-10056.
3. Larisch, S., et al. 2000. A novel mitochondrial septin-like protein, ARTS, mediates apoptosis dependent on its P-loop motif. *Nat. Cell Biol.* 2: 915-921.

## CHROMOSOMAL LOCATION

Genetic locus: SEPT1 (human) mapping to 16p11.2; Sept1 (mouse) mapping to 7 F3.

## SOURCE

Septin 1 (T-16) is an affinity purified goat polyclonal antibody raised against a peptide mapping within an internal region of Septin 1 of mouse origin.

## PRODUCT

Each vial contains 200  $\mu$ g IgG in 1.0 ml of PBS with < 0.1% sodium azide and 0.1% gelatin.

Blocking peptide available for competition studies, sc-23782 P, (100  $\mu$ g peptide in 0.5 ml PBS containing < 0.1% sodium azide and 0.2% BSA).

## STORAGE

Store at 4° C, **\*\*DO NOT FREEZE\*\***. Stable for one year from the date of shipment. Non-hazardous. No MSDS required.

## RESEARCH USE

For research use only, not for use in diagnostic procedures.

## APPLICATIONS

Septin 1 (T-16) is recommended for detection of Septin 1 of mouse, rat and, to a lesser extent, human origin by Western Blotting (starting dilution 1:200, dilution range 1:100-1:1000), immunofluorescence (starting dilution 1:50, dilution range 1:50-1:500), immunohistochemistry (including paraffin-embedded sections) (starting dilution 1:50, dilution range 1:50-1:500) and solid phase ELISA (starting dilution 1:30, dilution range 1:30-1:3000).

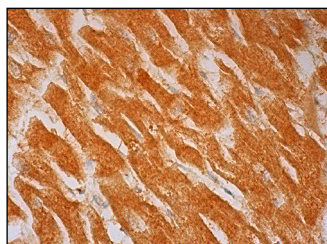
Suitable for use as control antibody for Septin 1 siRNA (h): sc-36472, Septin 1 siRNA (m): sc-36473, Septin 1 shRNA Plasmid (h): sc-36472-SH, Septin 1 shRNA Plasmid (m): sc-36473-SH, Septin 1 shRNA (h) Lentiviral Particles: sc-36472-V and Septin 1 shRNA (m) Lentiviral Particles: sc-36473-V.

Molecular Weight of Septin 1: 46 kDa.

## RECOMMENDED SECONDARY REAGENTS

To ensure optimal results, the following support (secondary) reagents are recommended: 1) Western Blotting: use donkey anti-goat IgG-HRP: sc-2020 (dilution range: 1:2000-1:100,000) or Cruz Marker™ compatible donkey anti-goat IgG-HRP: sc-2033 (dilution range: 1:2000-1:5000), Cruz Marker™ Molecular Weight Standards: sc-2035, TBS Blotto A Blocking Reagent: sc-2333 and Western Blotting Luminol Reagent: sc-2048. 2) Immunofluorescence: use donkey anti-goat IgG-FITC: sc-2024 (dilution range: 1:100-1:400) or donkey anti-goat IgG-TR: sc-2783 (dilution range: 1:100-1:400) with UltraCruz™ Mounting Medium: sc-24941. 3) Immunohistochemistry: use ImmunoCruz™: sc-2053 or ABC: sc-2023 goat IgG Staining Systems.

## DATA



Septin 1 (T-16): sc-23782. Immunoperoxidase staining of formalin fixed, paraffin-embedded human heart muscle tissue showing cytoplasmic staining of myocytes.

## PROTOCOLS

See our web site at [www.scbt.com](http://www.scbt.com) or our catalog for detailed protocols and support products.

**MONOS**  
Satisfaction  
Guaranteed

Try **Septin 1 (H-10): sc-373925** or **Septin 1 (B-8): sc-398586**, our highly recommended monoclonal alternatives to Septin 1 (T-16).