

NPY5-R (N-20): sc-23843

BACKGROUND

Pancreatic polypeptide (PP), neuropeptide Y (NPY), and peptide YY (PYY) are related 36-amino acid hormones. A number of structurally related receptors for these peptides have been isolated, NPY1-R, NPY2-R, NPY3-R, NPY4-R, NPY5-R, and NPY6-R. NPY4-R is expressed in several human tissues, including brain, coronary artery, and ileum. NPY4-R maps to human chromosome 10q11.2. NPY5-R, isolated from rat hypothalamus, encodes a 456 amino acid protein with less than 35% overall identity to known Y-type receptors. The human NPY5-R sequence is nearly identical to, but in the opposite orientation from, that of the human NPY1-R sequence. NPY5-R localizes to the paraventricular hypothalamic nucleus, the lateral hypothalamus, and other locations consistent with a role in the control of feeding behavior. The gene which encodes NPY5-R maps to human chromosome 4q32.2. NPY6-R is abundantly expressed in human heart and skeletal muscle and the gene which encodes NPY6-R maps to human chromosome 5q31.

CHROMOSOMAL LOCATION

Genetic locus: NPY5R (human) mapping to 4q32.2; Npy5r (mouse) mapping to 8 B3.2.

SOURCE

NPY5-R (N-20) is an affinity purified goat polyclonal antibody raised against a peptide mapping within an extracellular domain of NPY5-R of human origin.

PRODUCT

Each vial contains 200 µg IgG in 1.0 ml of PBS with < 0.1% sodium azide and 0.1% gelatin.

Blocking peptide available for competition studies, sc-23843 P, (100 µg peptide in 0.5 ml PBS containing < 0.1% sodium azide and 0.2% BSA).

APPLICATIONS

NPY5-R (N-20) is recommended for detection of NPY5-R of human and, to a lesser extent, mouse and rat origin by Western Blotting (starting dilution 1:200, dilution range 1:100-1:1000), immunoprecipitation [1-2 µg per 100-500 µg of total protein (1 ml of cell lysate)], immunofluorescence (starting dilution 1:50, dilution range 1:50-1:500), immunohistochemistry (including paraffin-embedded sections) (starting dilution 1:50, dilution range 1:50-1:500) and solid phase ELISA (starting dilution 1:30, dilution range 1:30-1:3000).

NPY5-R (N-20) is also recommended for detection of NPY5-R in additional species, including equine, canine, bovine and porcine.

Suitable for use as control antibody for NPY5-R siRNA (h): sc-42105, NPY5-R siRNA (m): sc-42106, NPY5-R shRNA Plasmid (h): sc-42105-SH, NPY5-R shRNA Plasmid (m): sc-42106-SH, NPY5-R shRNA (h) Lentiviral Particles: sc-42105-V and NPY5-R shRNA (m) Lentiviral Particles: sc-42106-V.

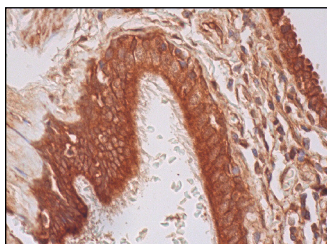
Molecular Weight of NPY5-R: 57 kDa.

Positive Controls: Ramos cell lysate: sc-2216, MIA PaCa-2 cell lysate: sc-2285 or SK-N-SH cell lysate: sc-2410.

RECOMMENDED SECONDARY REAGENTS

To ensure optimal results, the following support (secondary) reagents are recommended: 1) Western Blotting: use donkey anti-goat IgG-HRP: sc-2020 (dilution range: 1:2000-1:100,000) or Cruz Marker™ compatible donkey anti-goat IgG-HRP: sc-2033 (dilution range: 1:2000-1:5000), Cruz Marker™ Molecular Weight Standards: sc-2035, TBS Blotto A Blocking Reagent: sc-2333 and Western Blotting Luminol Reagent: sc-2048. 2) Immunoprecipitation: use Protein A/G PLUS-Agarose: sc-2003 (0.5 ml agarose/2.0 ml). 3) Immunofluorescence: use donkey anti-goat IgG-FITC: sc-2024 (dilution range: 1:100-1:400) or donkey anti-goat IgG-TR: sc-2783 (dilution range: 1:100-1:400) with UltraCruz™ Mounting Medium: sc-24941. 4) Immunohistochemistry: use ImmunoCruz™: sc-2053 or ABC: sc-2023 goat IgG Staining Systems.

DATA



NPY5-R (N-20): sc-23843. Immunoperoxidase staining of formalin fixed, paraffin-embedded human bronchus tissue showing cytoplasmic and membrane staining of respiratory epithelial cells.

STORAGE

Store at 4° C, **DO NOT FREEZE**. Stable for one year from the date of shipment. Non-hazardous. No MSDS required.

RESEARCH USE

For research use only, not for use in diagnostic procedures.

PROTOCOLS

See our web site at www.scbt.com or our catalog for detailed protocols and support products.

MONOS
Satisfaction
Guaranteed

Try **NPY5-R (H-4): sc-137167**, our highly recommended monoclonal alternative to NPY5-R (N-20).