

# ILBP (N-20): sc-23992

## BACKGROUND

The fatty acid binding protein (FABP) family of cytoplasmic hydrophobic ligand binding proteins influence lipid metabolism by binding and transporting long-chain fatty acids. Ileal lipid binding protein (ILBP) is a cytosolic ileocyte FABP that binds to both bile acids and fatty acids thereby mediating active uptake of bile acid in the ileum. Transport of bile acids from the liver is essential for the solubilization and transport of dietary lipids. ILBP contains ten antiparallel  $\beta$  strands arranged in two nearly orthogonal  $\beta$  sheets ( $\beta$  clam shell), covered on one side by two short, nearly parallel  $\alpha$  helices. Binding of fatty acids or bile acids to ILBP alters the side-chain proton resonances of amino acids within the protein cavity and increases the affinity of ILBP for bile acids; bile acid binding to ILBP is a positive-feedback regulation mechanism. The human ILBP gene maps to position 5q33.3, with transcript being abundant in the small intestine.

## CHROMOSOMAL LOCATION

Genetic locus: FABP6 (human) mapping to 5q33.3; Fabp6 (mouse) mapping to 11 B1.1.

## SOURCE

ILBP (N-20) is an affinity purified goat polyclonal antibody raised against a peptide mapping at the N-terminus of ILBP of human origin.

## PRODUCT

Each vial contains 200  $\mu$ g IgG in 1.0 ml of PBS with < 0.1% sodium azide and 0.1% gelatin.

Blocking peptide available for competition studies, sc-23992 P, (100  $\mu$ g peptide in 0.5 ml PBS containing < 0.1% sodium azide and 0.2% BSA).

## STORAGE

Store at 4° C, **\*\*DO NOT FREEZE\*\***. Stable for one year from the date of shipment. Non-hazardous. No MSDS required.

## APPLICATIONS

ILBP (N-20) is recommended for detection of ILBP of mouse, rat and human origin by Western Blotting (starting dilution 1:200, dilution range 1:100-1:1000), immunoprecipitation [1-2  $\mu$ g per 100-500  $\mu$ g of total protein (1 ml of cell lysate)], immunofluorescence (starting dilution 1:50, dilution range 1:50-1:500) and solid phase ELISA (starting dilution 1:30, dilution range 1:30-1:3000).

ILBP (N-20) is also recommended for detection of ILBP in additional species, including equine, bovine and porcine.

Suitable for use as control antibody for ILBP siRNA (h): sc-41241, ILBP siRNA (m): sc-41242, ILBP shRNA Plasmid (h): sc-41241-SH, ILBP shRNA Plasmid (m): sc-41242-SH, ILBP shRNA (h) Lentiviral Particles: sc-41241-V and ILBP shRNA (m) Lentiviral Particles: sc-41242-V.

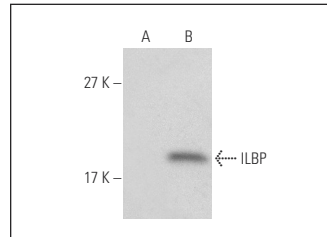
Molecular Weight of ILBP: 14 kDa.

Positive Controls: ILBP (h): 293T Lysate: sc-371518.

## RECOMMENDED SECONDARY REAGENTS

To ensure optimal results, the following support (secondary) reagents are recommended: 1) Western Blotting: use donkey anti-goat IgG-HRP: sc-2020 (dilution range: 1:2000-1:100,000) or Cruz Marker™ compatible donkey anti-goat IgG-HRP: sc-2033 (dilution range: 1:2000-1:5000), Cruz Marker™ Molecular Weight Standards: sc-2035, TBS Blotto A Blocking Reagent: sc-2333 and Western Blotting Luminol Reagent: sc-2048. 2) Immunoprecipitation: use Protein A/G PLUS-Agarose: sc-2003 (0.5 ml agarose/2.0 ml). 3) Immunofluorescence: use donkey anti-goat IgG-FITC: sc-2024 (dilution range: 1:100-1:400) or donkey anti-goat IgG-TR: sc-2783 (dilution range: 1:100-1:400) with UltraCruz™ Mounting Medium: sc-24941.

## DATA



ILBP (N-20): sc-23992. Western blot analysis of ILBP expression in non-transfected: sc-117752 (A) and human ILBP transfected: sc-371518 (B) 293T whole cell lysates.

## RESEARCH USE

For research use only, not for use in diagnostic procedures.

## PROTOCOLS

See our web site at [www.scbt.com](http://www.scbt.com) or our catalog for detailed protocols and support products.

**MONOS**  
Satisfaction  
Guaranteed

Try **ILBP (E-9): sc-515609** or **ILBP (4A4): sc-517090**, our highly recommended monoclonal alternatives to ILBP (N-20).