

CKAP5 (E-17): sc-240235

BACKGROUND

CKAP5 (cytoskeleton-associated protein 5), also known as ch-TOG (colonic hepatic tumor overexpressed gene), is a 2,032 amino acid protein that is a member of the TOG/XMAP215 family and contains nine heat repeats. CKAP5 is expressed in skeletal muscle, brain, heart, placenta, lung, liver, kidney and pancreas and is overexpressed in hepatomas and colonic tumors. During interphase, CKAP5 localizes to the perinuclear cytoplasm and the spindle poles, where it plays an important role in spindle microtubule organization. Specifically, CKAP5 is required for extrapole formation in prometaphases lacking Ark-1, a mitotic centrosomal kinase that functions as a spindle regulator and is overexpressed in tumors. CKAP5 binds to hnRNP A2 (heterogeneous nuclear ribonucleoprotein) and interacts with TACC1, TACC3 and Tubulin.

REFERENCES

- Charrasse, S., Mazel, M., Taviaux, S., Berta, P., Chow, T. and Larroque, C. 1995. Characterization of the cDNA and pattern of expression of a new gene over-expressed in human hepatomas and colonic tumors. *Eur. J. Biochem.* 234: 406-413.
- Charrasse, S., Coubes, P., Arrancibia, S. and Larroque, C. 1996. Expression of the tumor over-expressed ch-TOG gene in human and baboon brain. *Neurosci. Lett.* 212: 119-122.
- Charrasse, S., Schroeder, M., Gauthier-Rouviere, C., Ango, F., Cassimeris, L., Gard, D.L. and Larroque, C. 1998. The TOGp protein is a new human microtubule-associated protein homologous to the *Xenopus* XMAP215. *J. Cell. Sci.* 111: 1371-1383.
- Dionne, M.A., Sanchez, A. and Compton, D.A. 2000. ch-TOGp is required for microtubule aster formation in a mammalian mitotic extract. *J. Biol. Chem.* 275: 12346-12352.
- Lauffart, B., Howell, S.J., Tasch, J.E., Cowell, J.K. and Still, I.H. 2002. Interaction of the transforming acidic coiled-coil 1 (TACC1) protein with ch-TOG and GAS41/NuB1 suggests multiple TACC1-containing protein complexes in human cells. *Biochem. J.* 363: 195-200.
- Gergely, F., Draviam, V.M. and Raff, J.W. 2003. The ch-TOG/XMAP215 protein is essential for spindle pole organization in human somatic cells. *Genes Dev.* 17: 336-341.
- Francone, V.P., Maggipinto, M.J., Kosturko, L.D. and Barbarese, E. 2007. The microtubule-associated protein tumor overexpressed gene/cytoskeleton-associated protein 5 is necessary for myelin basic protein expression in oligodendrocytes. *J. Neurosci.* 27: 7654-7662.

CHROMOSOMAL LOCATION

Genetic locus: CKAP5 (human) mapping to 11p11.2; Ckap5 (mouse) mapping to 2 E1.

SOURCE

CKAP5 (E-17) is an affinity purified goat polyclonal antibody raised against a peptide mapping within an internal region of CKAP5 of human origin.

PRODUCT

Each vial contains 200 µg IgG in 1.0 ml of PBS with < 0.1% sodium azide and 0.1% gelatin.

Blocking peptide available for competition studies, sc-240235 P, (100 µg peptide in 0.5 ml PBS containing < 0.1% sodium azide and 0.2% BSA).

APPLICATIONS

CKAP5 (E-17) is recommended for detection of CKAP5 of mouse, rat and human origin by Western Blotting (starting dilution 1:200, dilution range 1:100-1:1000), immunoprecipitation [1-2 µg per 100-500 µg of total protein (1 ml of cell lysate)], immunofluorescence (starting dilution 1:50, dilution range 1:50-1:500) and solid phase ELISA (starting dilution 1:30, dilution range 1:30-1:3000); non cross-reactive with other CKAP family members.

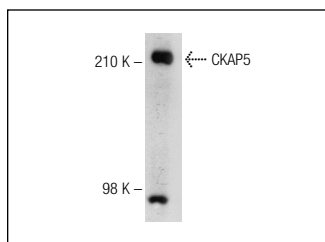
CKAP5 (E-17) is also recommended for detection of CKAP5 in additional species, including equine, canine, bovine and avian.

Suitable for use as control antibody for CKAP5 siRNA (h): sc-96689, CKAP5 siRNA (m): sc-142355, CKAP5 shRNA Plasmid (h): sc-96689-SH, CKAP5 shRNA Plasmid (m): sc-142355-SH, CKAP5 shRNA (h) Lentiviral Particles: sc-96689-V and CKAP5 shRNA (m) Lentiviral Particles: sc-142355-V.

Molecular Weight of CKAP5: 225 kDa.

Positive Controls: K-562 whole cell lysate: sc-2203.

DATA



CKAP5 (E-17): sc-240235. Western blot analysis of CKAP5 expression in K-562 whole cell lysate.

STORAGE

Store at 4° C, ****DO NOT FREEZE****. Stable for one year from the date of shipment. Non-hazardous. No MSDS required.

RESEARCH USE

For research use only, not for use in diagnostic procedures.

MONOS
Satisfaction
Guaranteed

Try **CKAP5 (H-4): sc-374394**, our highly recommended monoclonal alternative to CKAP5 (E-17).