

# suprabasin (E-13): sc-240927

## BACKGROUND

Suprabasin (SBSN) is a 247 amino acid secreted protein that is upregulated in differentiating keratinocytes and is thought to play a role in epidermal differentiation. Expressed in uterus, skin, thymus and esophagus, suprabasin is encoded by a gene that maps to human chromosome 19q13.12. Chromosome 19 consists of about 63 million bases with over 1,400 genes, making up over 2% of human genomic DNA. Chromosome 19 is the genetic home for a number of immunoglobulin superfamily members, including the killer cell and leukocyte Ig-like receptors, a number of ICAMs, the CEACAM and PSG families, and Fc  $\alpha$  receptors. Key genes for eye color and hair color also map to chromosome 19. Peutz-Jeghers syndrome, spinocerebellar ataxia type 6, the stroke disorder CADASIL, hypercholesterolemia and Insulin-dependent diabetes have been linked to chromosome 19.

## REFERENCES

- Olsen, A., Teglund, S., Nelson, D., Gordon, L., Copeland, A., Georgescu, A., Carrano, A. and Hammarström, S. 1994. Gene organization of the pregnancy-specific glycoprotein region on human chromosome 19: assembly and analysis of a 700 kb cosmid contig spanning the region. *Genomics* 23: 659-668.
- Trowsdale, J., Barten, R., Haude, A., Stewart, C.A., Beck, S. and Wilson, M.J. 2001. The genomic context of natural killer receptor extended gene families. *Immunol. Rev.* 181: 20-38.
- Park, G.T., Lim, S.E., Jang, S.I. and Morasso, M.I. 2002. Suprabasin, a novel epidermal differentiation marker and potential cornified envelope precursor. *J. Biol. Chem.* 277: 45195-45202.
- Le Meur, N., Martin, C., Saugier-Verber, P., Joly, G., Lemoine, F., Moirot, H., Rossi, A., Bachy, B., Cabot, A., Joly, P. and Frébourg, T. 2004. Complete germline deletion of the STK11 gene in a family with Peutz-Jeghers syndrome. *Eur. J. Hum. Genet.* 12: 415-418.
- Moffatt, P., Salois, P., St-Amant, N., Gaumont, M.H. and Lanctôt, C. 2004. Identification of a conserved cluster of skin-specific genes encoding secreted proteins. *Gene* 334: 123-131.

## CHROMOSOMAL LOCATION

Genetic locus: SBSN (human) mapping to 19q13.12.

## SOURCE

suprabasin (E-13) is an affinity purified goat polyclonal antibody raised against a peptide mapping near the N-terminus of suprabasin of human origin.

## PRODUCT

Each vial contains 200  $\mu$ g IgG in 1.0 ml of PBS with < 0.1% sodium azide and 0.1% gelatin.

Blocking peptide available for competition studies, sc-240927 P, (100  $\mu$ g peptide in 0.5 ml PBS containing < 0.1% sodium azide and 0.2% BSA).

## RESEARCH USE

For research use only, not for use in diagnostic procedures.

## APPLICATIONS

suprabasin (E-13) is recommended for detection of suprabasin of human origin by Western Blotting (starting dilution 1:200, dilution range 1:100-1:1000), immunoprecipitation [1-2  $\mu$ g per 100-500  $\mu$ g of total protein (1 ml of cell lysate)], immunofluorescence (starting dilution 1:50, dilution range 1:50-1:500) and solid phase ELISA (starting dilution 1:30, dilution range 1:30-1:3000).

suprabasin (E-13) is also recommended for detection of suprabasin in additional species, including canine.

Suitable for use as control antibody for suprabasin siRNA (h): sc-97178, suprabasin shRNA Plasmid (h): sc-97178-SH and suprabasin shRNA (h) Lentiviral Particles: sc-97178-V.

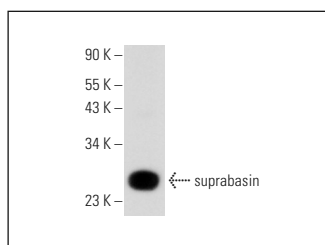
Molecular Weight of suprabasin: 25 kDa.

Positive Controls: human esophagus extract: sc-363760.

## RECOMMENDED SECONDARY REAGENTS

To ensure optimal results, the following support (secondary) reagents are recommended: 1) Western Blotting: use donkey anti-goat IgG-HRP: sc-2020 (dilution range: 1:2000-1:100,000) or Cruz Marker™ compatible donkey anti-goat IgG-HRP: sc-2033 (dilution range: 1:2000-1:5000), Cruz Marker™ Molecular Weight Standards: sc-2035, TBS Blotto A Blocking Reagent: sc-2333 and Western Blotting Luminol Reagent: sc-2048. 2) Immunoprecipitation: use Protein A/G PLUS-Agarose: sc-2003 (0.5 ml agarose/2.0 ml). 3) Immunofluorescence: use donkey anti-goat IgG-FITC: sc-2024 (dilution range: 1:100-1:400) or donkey anti-goat IgG-TR: sc-2783 (dilution range: 1:100-1:400) with UltraCruz™ Mounting Medium: sc-24941.

## DATA



suprabasin (E-13): sc-240927. Western blot analysis of suprabasin expression in human esophagus tissue extract.

## STORAGE

Store at 4° C, \*\*DO NOT FREEZE\*\*. Stable for one year from the date of shipment. Non-hazardous. No MSDS required.

## PROTOCOLS

See our web site at [www.scbt.com](http://www.scbt.com) or our catalog for detailed protocols and support products.