

# ANO8 (E-15): sc-241042

## BACKGROUND

ANO8 (anoctamin 8), also known as, TMEM16H (transmembrane protein 16H), is a 1,232 amino acid multi-pass membrane protein that is expressed in neuronal tissue, fetal brain and embryonic stem cells. TMEM16H is encoded by a gene that maps to chromosome 19 and is expressed as two isoforms due to alternative splicing events. Chromosome 19 includes a diversity of interesting genes and is recognized for having the greatest gene density of the human chromosomes. It is the genetic home for a number of immunoglobulin superfamily members, including the killer cell and leukocyte Ig-like receptors, a number of ICAMs, the CEACAM and PSG family and Fc receptors (FcRs). Key genes for eye color and hair color also map to chromosome 19.

## REFERENCES

- LaPoint, S.F., et al. 2000. Cerebral autosomal dominant arteriopathy with subcortical infarcts and leukoencephalopathy (CADASIL). *Adv. Anat. Pathol.* 7: 307-321.
- Trettel, F., et al. 2000. A fine physical map of the CACNA1A gene region on 19p13.1-p13.2 chromosome. *Gene* 241: 45-50.
- Buchet-Poyau, K., et al. 2002. Search for the second Peutz-Jeghers syndrome locus: exclusion of the STK13, PRKCG, KLK10, and PSCD2 genes on chromosome 19 and the STK11IP gene on chromosome 2. *Cytogenet. Genome Res.* 97: 171-178.
- Moodie, S.J., et al. 2002. Analysis of candidate genes on chromosome 19 in coeliac disease: an association study of the KIR and LILR gene clusters. *Eur. J. Immunogenet.* 29: 287-291.
- Online Mendelian Inheritance in Man, OMIM™. 2002. Johns Hopkins University, Baltimore, MD. MIM Number: 610216. World Wide Web URL: <http://www.ncbi.nlm.nih.gov/omim/>
- Grimwood, J., et al. 2004. The DNA sequence and biology of human chromosome 19. *Nature* 428: 529-535.

## CHROMOSOMAL LOCATION

Genetic locus: ANO8 (human) mapping to 19p13.11; Ano8 (mouse) mapping to 8 B3.3.

## SOURCE

ANO8 (E-15) is an affinity purified goat polyclonal antibody raised against a peptide mapping within an internal region of ANO8 of human origin.

## PRODUCT

Each vial contains 200 µg IgG in 1.0 ml of PBS with < 0.1% sodium azide and 0.1% gelatin.

Blocking peptide available for competition studies, sc-241042 P, (100 µg peptide in 0.5 ml PBS containing < 0.1% sodium azide and 0.2% BSA).

## STORAGE

Store at 4° C, **\*\*DO NOT FREEZE\*\***. Stable for one year from the date of shipment. Non-hazardous. No MSDS required.

## APPLICATIONS

ANO8 (E-15) is recommended for detection of ANO8 of mouse, rat and human origin by Western Blotting (starting dilution 1:200, dilution range 1:100-1:1000), immunoprecipitation [1-2 µg per 100-500 µg of total protein (1 ml of cell lysate)], immunofluorescence (starting dilution 1:50, dilution range 1:50-1:500), immunohistochemistry (including paraffin-embedded sections) (starting dilution 1:50, dilution range 1:50-1:500) and solid phase ELISA (starting dilution 1:30, dilution range 1:30-1:3000); non cross-reactive with other ANO family members.

ANO8 (E-15) is also recommended for detection of ANO8 in additional species, including canine and bovine.

Suitable for use as control antibody for ANO8 siRNA (h): sc-97638, ANO8 siRNA (m): sc-154405, ANO8 shRNA Plasmid (h): sc-97638-SH, ANO8 shRNA Plasmid (m): sc-154405-SH, ANO8 shRNA (h) Lentiviral Particles: sc-97638-V and ANO8 shRNA (m) Lentiviral Particles: sc-154405-V.

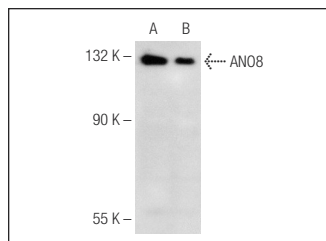
Molecular Weight of ANO8: 136 kDa.

Positive Controls: IMR-32 cell lysate: sc-2409 or Y79 cell lysate: sc-2240.

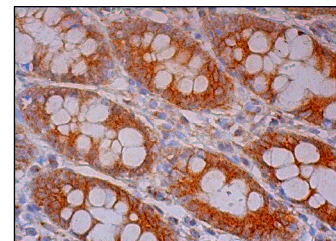
## RECOMMENDED SECONDARY REAGENTS

To ensure optimal results, the following support (secondary) reagents are recommended: 1) Western Blotting: use donkey anti-goat IgG-HRP: sc-2020 (dilution range: 1:2000-1:100,000) or Cruz Marker™ compatible donkey anti-goat IgG-HRP: sc-2033 (dilution range: 1:2000-1:5000), Cruz Marker™ Molecular Weight Standards: sc-2035, TBS Blotto A Blocking Reagent: sc-2333 and Western Blotting Luminol Reagent: sc-2048. 2) Immunoprecipitation: use Protein A/G PLUS-Agarose: sc-2003 (0.5 ml agarose/2.0 ml). 3) Immunofluorescence: use donkey anti-goat IgG-FITC: sc-2024 (dilution range: 1:100-1:400) or donkey anti-goat IgG-TR: sc-2783 (dilution range: 1:100-1:400) with UltraCruz™ Mounting Medium: sc-24941. 4) Immunohistochemistry: use ImmunoCruz™: sc-2053 or ABC: sc-2023 goat IgG Staining Systems.

## DATA



ANO8 (E-15): sc-241042. Western blot analysis of ANO8 expression in IMR-32 (A) and Y79 (B) whole cell lysates.



ANO8 (E-15): sc-241042. Immunoperoxidase staining of formalin fixed, paraffin-embedded human rectum tissue showing cytoplasmic staining of glandular cells.

## RESEARCH USE

For research use only, not for use in diagnostic procedures.