

C17orf97 (G-15): sc-241243

BACKGROUND

Chromosome 17 makes up over 2.5% of the human genome with about 81 million bases encoding over 1,200 genes. Two key tumor suppressor genes are associated with chromosome 17, namely, p53 and BRCA1. Tumor suppressor p53 is necessary for maintenance of cellular genetic integrity by moderating cell fate through DNA repair versus cell death. Malfunction or loss of p53 expression is associated with malignant cell growth and Li-Fraumeni syndrome. Like p53, BRCA1 is directly involved in DNA repair, though specifically it is recognized as a genetic determinant of early onset breast cancer and predisposition to cancers of the ovary, colon, prostate gland and fallopian tubes. Chromosome 17 is also linked to neurofibromatosis, a condition characterized by neural and epidermal lesions, and dysregulated Schwann cell growth. Alexander disease, Birt-Hogg-Dube syndrome and Canavan disease are also associated with chromosome 17. The C17orf97 gene product has been provisionally designated C17orf97 pending further characterization.

REFERENCES

1. Welsch, M.J., et al. 2005. Birt-Hogg-Dube syndrome. *Int. J. Dermatol.* 44: 668-673.
2. Nusbaum, R., et al. 2006-2007. Susceptibility to breast cancer: hereditary syndromes and low penetrance genes. *Breast Dis.* 27: 21-50.
3. Al-Dirbashi, O.Y., et al. 2007. Quantification of N-acetylaspartic acid in urine by LC-MS/MS for the diagnosis of Canavan disease. *J. Inher. Metab. Dis.* 30: 612.
4. Dann, R.B., et al. 2007. Strategies for ovarian cancer prevention. *Obstet. Gynecol. Clin. North Am.* 34: 667-686.
5. Farrell, C.J. and Plotkin, S.R. 2007. Genetic causes of brain tumors: neurofibromatosis, tuberous sclerosis, von Hippel-Lindau, and other syndromes. *Neurol. Clin.* 25: 925-946.
6. Tai, Y.C., et al. 2007. Breast cancer risk among male BRCA1 and BRCA2 mutation carriers. *J. Natl. Cancer Inst.* 99: 1811-1814.

CHROMOSOMAL LOCATION

Genetic locus: C17orf97 (human) mapping to 17p13.3.

SOURCE

C17orf97 (G-15) is an affinity purified goat polyclonal antibody raised against a peptide mapping near the N-terminus of C17orf97 of human origin.

PRODUCT

Each vial contains 200 µg IgG in 1.0 ml of PBS with < 0.1% sodium azide and 0.1% gelatin.

Blocking peptide available for competition studies, sc-241243 P, (100 µg peptide in 0.5 ml PBS containing < 0.1% sodium azide and 0.2% BSA).

STORAGE

Store at 4° C, ****DO NOT FREEZE****. Stable for one year from the date of shipment. Non-hazardous. No MSDS required.

APPLICATIONS

C17orf97 (G-15) is recommended for detection of C17orf97 of human origin by Western Blotting (starting dilution 1:200, dilution range 1:100-1:1000), immunoprecipitation [1-2 µg per 100-500 µg of total protein (1 ml of cell lysate)], immunofluorescence (starting dilution 1:50, dilution range 1:50-1:500) and solid phase ELISA (starting dilution 1:30, dilution range 1:30-1:3000).

Suitable for use as control antibody for C17orf97 siRNA (h): sc-93653, C17orf97 shRNA Plasmid (h): sc-93653-SH and C17orf97 shRNA (h) Lentiviral Particles: sc-93653-V.

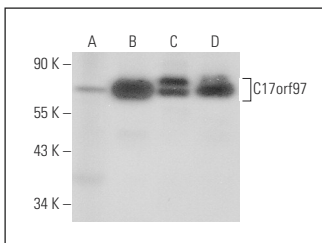
Molecular Weight of C17orf97: 50/46/47 kDa.

Positive Controls: HeLa whole cell lysate: sc-2200, Hep G2 cell lysate: sc-2227 or HEK293 whole cell lysate: sc-45136.

RECOMMENDED SECONDARY REAGENTS

To ensure optimal results, the following support (secondary) reagents are recommended: 1) Western Blotting: use donkey anti-goat IgG-HRP: sc-2020 (dilution range: 1:2000-1:100,000) or Cruz Marker™ compatible donkey anti-goat IgG-HRP: sc-2033 (dilution range: 1:2000-1:5000), Cruz Marker™ Molecular Weight Standards: sc-2035, TBS Blotto A Blocking Reagent: sc-2333 and Western Blotting Luminol Reagent: sc-2048. 2) Immunoprecipitation: use Protein A/G PLUS-Agarose: sc-2003 (0.5 ml agarose/2.0 ml). 3) Immunofluorescence: use donkey anti-goat IgG-FITC: sc-2024 (dilution range: 1:100-1:400) or donkey anti-goat IgG-TR: sc-2783 (dilution range: 1:100-1:400) with UltraCruz™ Mounting Medium: sc-24941.

DATA



C17orf97 (G-15): sc-241243. Western blot analysis of C17orf97 expression in human liver tissue extract (A) and Hep G2 (B), HEK293 (C) and HeLa (D) whole cell lysates.

RESEARCH USE

For research use only, not for use in diagnostic procedures.

PROTOCOLS

See our web site at www.scbt.com or our catalog for detailed protocols and support products.