

C19orf45 (C-20): sc-241265

BACKGROUND

C19orf44 (chromosome 19 open reading frame 45) is a 505 amino acid protein that is encoded by a gene located on human chromosome 19. Chromosome 19 consists of approximately 63 million bases and makes up over 2% of human genomic DNA. Chromosome 19 includes a diversity of interesting genes and is recognized for having the greatest gene density of the human chromosomes. It is the genetic home for a number of immunoglobulin superfamily members including the killer cell and leukocyte Ig-like receptors, a number of ICAMs, the CEACAM and PSG family, and Fc α receptors. Key genes for eye color and hair color also map to chromosome 19. Peutz-Jeghers syndrome, spinocerebellar ataxia type 6, the stroke disorder CADASIL, hypercholesterolemia and Insulin-dependent diabetes have been linked to chromosome 19. Translocations with chromosome 19 and chromosome 14 can be seen in some lymphoproliferative disorders and typically involve the proto-oncogene Bcl3.

REFERENCES

- Zimmermann, W., Weber, B., Ortlieb, B., Rudert, F., Schempp, W., Fiebig, H.H., Shively, J.E., von Kleist, S. and Thompson, J.A. 1988. Chromosomal localization of the carcinoembryonic antigen gene family and differential expression in various tumors. *Cancer Res.* 48: 2550-2554.
- LaPoint, S.F., Patel, U. and Rubio, A. 2000. Cerebral autosomal dominant arteriopathy with subcortical infarcts and leukoencephalopathy (CADASIL). *Adv. Anat. Pathol.* 7: 307-321.
- Trettel, F., Mantuano, E., Calabresi, V., Veneziano, L., Olsen, A.S., Georgescu, A., Gordon, L., Sabbadini, G., Frontali, M. and Jodice C. 2000. A fine physical map of the CACNA1A gene region on 19p13.1-p13.2 chromosome. *Gene* 241: 45-50.
- Buchet-Poyau, K., Mehenni, H., Radhakrishna, U. and Antonarakis, S.E. 2002. Search for the second Peutz-Jeghers syndrome locus: exclusion of the STK13, PRKCG, KLK10, and PSCD2 genes on chromosome 19 and the STK11IP gene on chromosome 2. *Cytogenet. Genome Res.* 97: 171-178.
- Moodie, S.J., Norman, P.J., King, A.L., Fraser, J.S., Curtis, D., Ellis, H.J., Vaughan, R.W. and Ciclitira, P.J. 2002. Analysis of candidate genes on chromosome 19 in coeliac disease: an association study of the KIR and LILR gene clusters. *Eur. J. Immunogenet.* 29: 287-291.

CHROMOSOMAL LOCATION

Genetic locus: C19orf45 (human) mapping to 19p13.2.

SOURCE

C19orf45 (C-20) is an affinity purified goat polyclonal antibody raised against a peptide mapping near the C-terminus of C19orf45 of human origin.

PRODUCT

Each vial contains 200 μ g IgG in 1.0 ml of PBS with < 0.1% sodium azide and 0.1% gelatin.

Blocking peptide available for competition studies, sc-241265 P, (100 μ g peptide in 0.5 ml PBS containing < 0.1% sodium azide and 0.2% BSA).

APPLICATIONS

C19orf45 (C-20) is recommended for detection of C19orf45 of human origin by Western Blotting (starting dilution 1:200, dilution range 1:100-1:1000), immunoprecipitation [1-2 μ g per 100-500 μ g of total protein (1 ml of cell lysate)], immunofluorescence (starting dilution 1:50, dilution range 1:50-1:500) and solid phase ELISA (starting dilution 1:30, dilution range 1:30-1:3000).

Suitable for use as control antibody for C19orf45 siRNA (h): sc-97842, C19orf45 shRNA Plasmid (h): sc-97842-SH and C19orf45 shRNA (h) Lentiviral Particles: sc-97842-V.

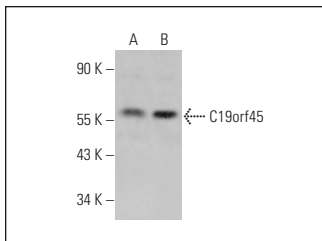
Molecular Weight of C19orf45: 57 kDa.

Positive Controls: Hep G2 cell lysate: sc-2227 or HEK293 whole cell lysate: sc-45136.

RECOMMENDED SECONDARY REAGENTS

To ensure optimal results, the following support (secondary) reagents are recommended: 1) Western Blotting: use donkey anti-goat IgG-HRP: sc-2020 (dilution range: 1:2000-1:100,000) or Cruz Marker™ compatible donkey anti-goat IgG-HRP: sc-2033 (dilution range: 1:2000-1:5000), Cruz Marker™ Molecular Weight Standards: sc-2035, TBS Blotto A Blocking Reagent: sc-2333 and Western Blotting Luminol Reagent: sc-2048. 2) Immunoprecipitation: use Protein A/G PLUS-Agarose: sc-2003 (0.5 ml agarose/2.0 ml). 3) Immunofluorescence: use donkey anti-goat IgG-FITC: sc-2024 (dilution range: 1:100-1:400) or donkey anti-goat IgG-TR: sc-2783 (dilution range: 1:100-1:400) with UltraCruz™ Mounting Medium: sc-24941.

DATA



C19orf45 (C-20): sc-241265. Western blot analysis of C19orf45 expression in Hep G2 (A) and HEK293 (B) whole cell lysates.

STORAGE

Store at 4° C, **DO NOT FREEZE**. Stable for one year from the date of shipment. Non-hazardous. No MSDS required.

RESEARCH USE

For research use only, not for use in diagnostic procedures.

PROTOCOLS

See our web site at www.scbt.com or our catalog for detailed protocols and support products.