

# C19orf47 (E-19): sc-241277

## BACKGROUND

C19orf47 (chromosome 19 open reading frame 47) is a 422 amino acid protein that exists as 3 alternatively spliced isoforms and are encoded by a gene located on human chromosome 19. Chromosome 19 consists of approximately 63 million bases and makes up over 2% of human genomic DNA. Chromosome 19 includes a diversity of interesting genes and is recognized for having the greatest gene density of the human chromosomes. It is the genetic home for a number of immunoglobulin superfamily members including the killer cell and leukocyte Ig-like receptors, a number of ICAMs, the CEACAM and PSG family, and Fc $\alpha$  receptors. Key genes for eye color and hair color also map to chromosome 19. Peutz-Jeghers syndrome, spinocerebellar ataxia type 6, the stroke disorder CADASIL, hypercholesterolemia and insulin-dependent diabetes have been linked to chromosome 19. Translocations with chromosome 19 and chromosome 14 can be seen in some lymphoproliferative disorders and typically involve the proto-oncogene BCL3.

## CHROMOSOMAL LOCATION

Genetic locus: C19orf47 (human) mapping to 19q13.2; 2310022A10Rik (mouse) mapping to 7 A3.

## SOURCE

C19orf47 (E-19) is an affinity purified goat polyclonal antibody raised against a peptide mapping within an internal region of C19orf47 of human origin.

## PRODUCT

Each vial contains 200  $\mu$ g IgG in 1.0 ml of PBS with < 0.1% sodium azide and 0.1% gelatin.

Blocking peptide available for competition studies, sc-241277 P, (100  $\mu$ g peptide in 0.5 ml PBS containing < 0.1% sodium azide and 0.2% BSA).

## APPLICATIONS

C19orf47 (E-19) is recommended for detection of C19orf47 of human origin, 2310022A10Rik of mouse origin and RGD1307554 of rat origin by Western Blotting (starting dilution 1:200, dilution range 1:100-1:1000), immunoprecipitation [1-2  $\mu$ g per 100-500  $\mu$ g of total protein (1 ml of cell lysate)], immunofluorescence (starting dilution 1:50, dilution range 1:50-1:500) and solid phase ELISA (starting dilution 1:30, dilution range 1:30-1:3000).

C19orf47 (E-19) is also recommended for detection of C19orf47 in additional species, including equine, canine, bovine and porcine.

Suitable for use as control antibody for C19orf47 siRNA (h): sc-97383, 2310022A10Rik siRNA (m): sc-108674, C19orf47 shRNA Plasmid (h): sc-97383-SH, 2310022A10Rik shRNA Plasmid (m): sc-108674-SH, C19orf47 shRNA (h) Lentiviral Particles: sc-97383-V and 2310022A10Rik shRNA (m) Lentiviral Particles: sc-108674-V.

Molecular Weight (predicted) of C19orf47: 45 kDa.

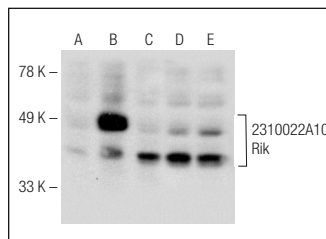
Molecular Weight (observed) of C19orf47: 37 kDa.

Positive Controls: 2310022A10Rik (m): 293T Lysate: sc-126315, LNCaP cell lysate: sc-2231 or NAMALWA cell lysate: sc-2234.

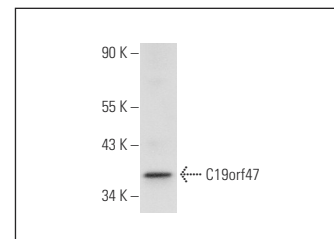
## RECOMMENDED SECONDARY REAGENTS

To ensure optimal results, the following support (secondary) reagents are recommended: 1) Western Blotting: use donkey anti-goat IgG-HRP: sc-2020 (dilution range: 1:2000-1:100,000) or Cruz Marker™ compatible donkey anti-goat IgG-HRP: sc-2033 (dilution range: 1:2000-1:5000), Cruz Marker™ Molecular Weight Standards: sc-2035, TBS Blotto A Blocking Reagent: sc-2333 and Western Blotting Luminol Reagent: sc-2048. 2) Immunoprecipitation: use Protein A/G PLUS-Agarose: sc-2003 (0.5 ml agarose/2.0 ml). 3) Immunofluorescence: use donkey anti-goat IgG-FITC: sc-2024 (dilution range: 1:100-1:400) or donkey anti-goat IgG-TR: sc-2783 (dilution range: 1:100-1:400) with UltraCruz™ Mounting Medium: sc-24941.

## DATA



C19orf47 (E-19): sc-241277. Western blot analysis of 2310022A10Rik expression in non-transfected 293T: sc-117752 (A), mouse 2310022A10Rik transfected 293T: sc-126315 (B), LNCaP (C), NAMALWA (D) and Jurkat (E) whole cell lysates and mouse skeletal muscle tissue extract (F).



C19orf47 (E-19): sc-241277. Western blot analysis of C19orf47 expression in Daudi whole cell lysate.

## STORAGE

Store at 4° C, \*\*DO NOT FREEZE\*\*. Stable for one year from the date of shipment. Non-hazardous. No MSDS required.

## RESEARCH USE

For research use only, not for use in diagnostic procedures.

## PROTOCOLS

See our web site at [www.scbt.com](http://www.scbt.com) or our catalog for detailed protocols and support products.



Try **C19orf47 (H-5): sc-393896**, our highly recommended monoclonal alternative to C19orf47 (E-19).